

Copyrighted

by

HOWARD G. ANDRUS

Editor-in-Chief

ELTON L. KAHLER

Business Manager

THE 1937 BOULDER

Published by

ALL DEPARTMENTS OF
THE JUNIOR CLASS

OF

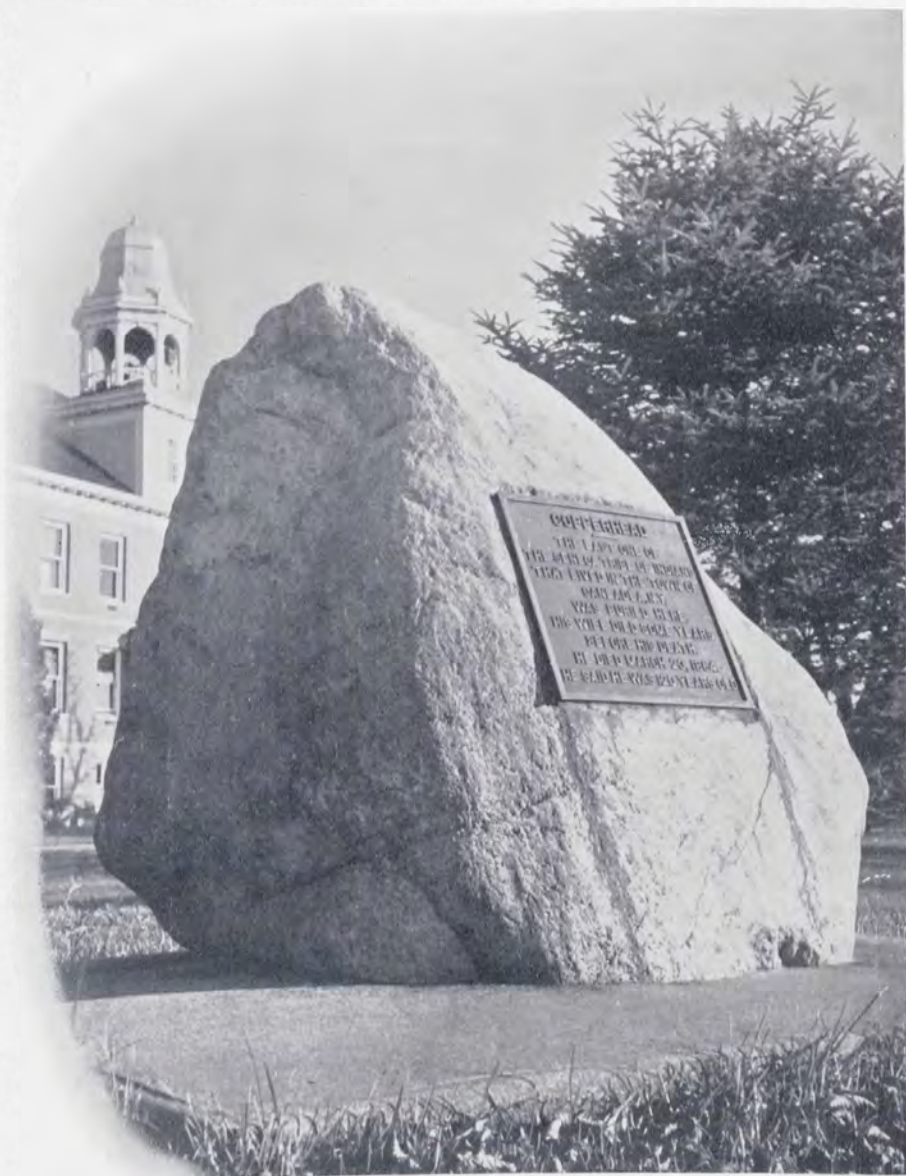
HOUGHTON COLLEGE

Houghton, New York

Volume XIV

DEDICATION

TO THE BOULDER . . . Houghton's traditional link with the Past . . . "Founded on The Rock" . . . symbol of indomitableness, steadfastness, permanence . . . WE DEDICATE THIS VOLUME . . . in the hope . . . and belief . . . that the Past has endowed our Alma Mater with the firm foundation necessary to establish the "Greater Houghton with a Grander Ministry" of the Future . . .



FOREWORD

WHAT THE CHAPEL BELL is to late risers, this volume of the BOULDER is to you, the STUDENT BODY of Houghton College. It serves to AWAKEN you

To the pleasant experiences and associations of the past year.

To the number of friends you have made at Houghton.

To the loyalty you owe your Alma Mater and its traditions

To the fact that the year 1936-1937 was one of the happiest you have ever known.

THIS IS NOT A BOOK only. It is a pictorial diary. Take it wherever you go, that it may prove a constant companion; an old friend; a treasure chest in which you keep locked the store of ambitions, ideals, and accomplishments of your campus days.





GAOYADEO DORMITORY (POINT)



VIEW FROM THE POINT



B
E
D
F
O
R
D

G
Y
M
N
A
S
I
U
M



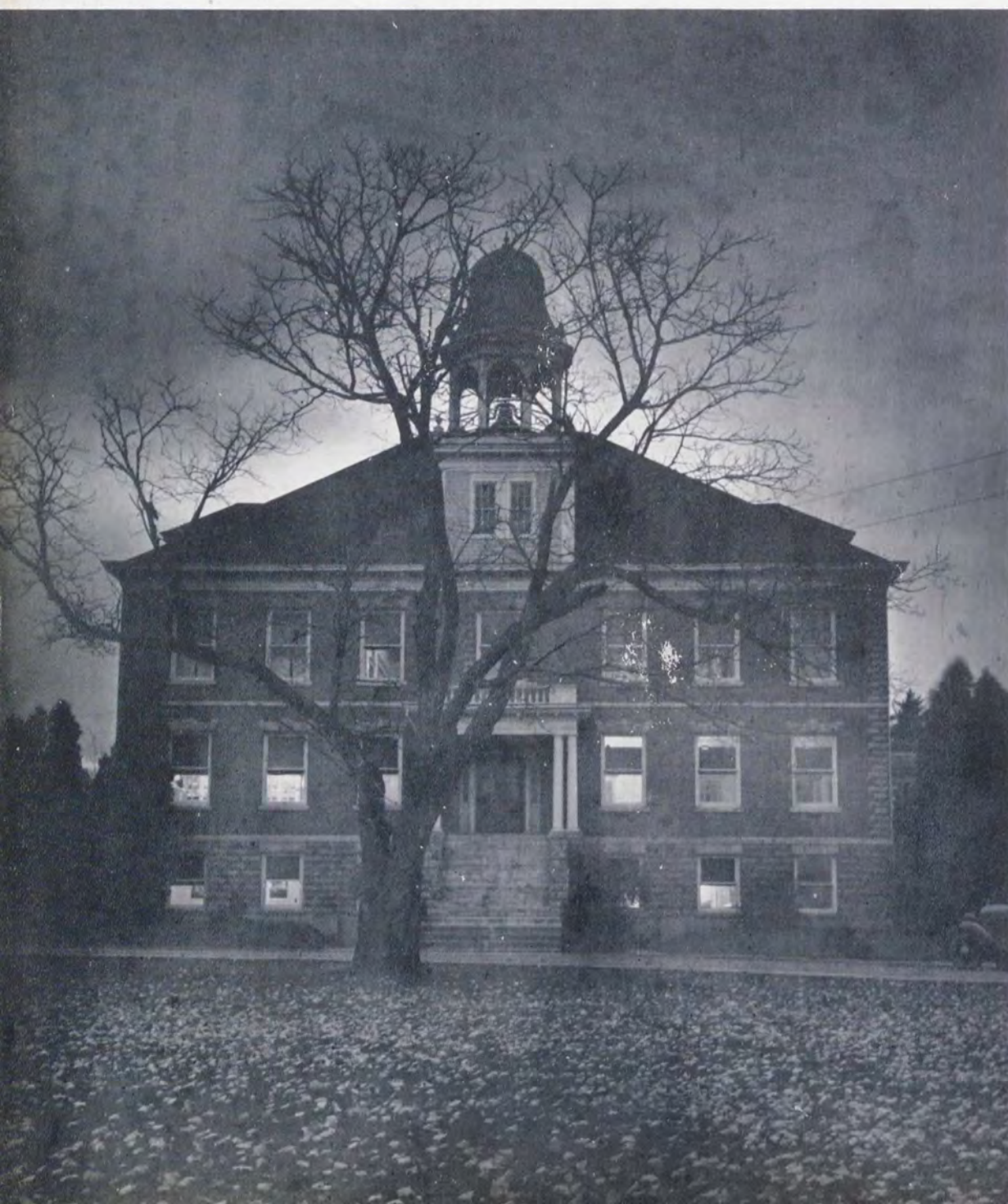
GAOYADEO
IN
SNOW
TIME



THE BOULDER AT NIGHT



WESLEYAN METHODIST CHURCH



A
D
M
I
N
I
S
T
R
A
T
I
O
N

B
U
I
L
D
I
N
G



BOOK TWO



ADMINISTRATION
MATH and SCIENCE
LANGUAGES
MUSIC and ART
RELIGIOUS EDUCATION
SOCIAL SCIENCE, EDUCATION,
PHYSICAL EDUCATION
SEMINARY
EXECUTIVE LITERARY BOARD
STUDENT COUNCIL

Administration





Top Row: Gillette, Smith,
Kartevold, Pitt, Moses, Cott.
Second Row: Dilks, Parker,
Wright, Stevenson, Purdy.
Third Row: Bain, Fancher,
Rickard, Luckey, Paine.

PERSONNEL

JAMES S. LUCKEY, Pd.M., A.M., LL.D.	President and Treasurer
HERBERT LER. FANCHER, A.M.	Vice-President
STEPHEN W. PAINE, A.M., Ph.D.	Dean of College
STANLEY W. WRIGHT, A.B.	Dean of Men
GUDRUN KARTEVOLD, M.R.E.	Dean of Women
JOSEPHINE RICKARD, A.M.	Secretary of the Faculty
MARY F. BAIN, A.B.	Registrar
WILLARD G. SMITH, B.S.	Director of Public Relations
M. BELLE MOSES, A.B.	Librarian
A. H. LYMAN, M.D.	College Physician
MILDRED B. GILLETTE	Bookkeeper, Assistant Treasurer
EDITH A. DILKS, A.M.	Matron
EULAH M. PURDY, R.N.	Head Nurse
LENA M. STEVENSON, A.B.	Secretary to the President
JOHN H. COTT	Superintendent of Grounds
REV. J. R. PITT	Pastor, Wesleyan Methodist Church

PRESIDENT
JAMES S. LUCKEY



M A T H a n d S C I E N C E

Top Row: Rork, Pryor, Burnell.
Second Row: Davison, Luckey,
Douglas.



DR. R. E. DOUGLAS

RAYMOND E. DOUGLAS, M.S., PH.D.	Biology
JAMES S. LUCKEY, Pd.M., A.M., LL.D.	Mathematics
MARVIN J. PRYOR, A.M.	Physics, Astronomy
DORAH BURNELL, B.S., A.M.	Chemistry
CRYSTAL L. RORK, A.M.	Botany
RACHEL DAVISON, A.M.	Mathematics

PIERCE E. WOOLSEY, A.M., PH.D.	French
SAMUEL A. SMALL, A.M., PH.D.	English
STEPHEN W. PAINE, A.M., PH.D.	Greek
HERBERT LER. FANCHER, A.M.	German
CLAUDE A. RIES, A.M.	Greek
EDITH N. ARLIN, A.M.	Latin
JOSEPHINE RICKARD, A.M.	English
STANLEY W. WRIGHT, A.B.	Public Speaking
ALICE POOL, A.M.	French, English

DR. P. E. WOOLSEY



L A N G U A G E S



Standing: Paine, Small, Ries,
Woolsey. Seated: Fancher,
Wright, Pool, Arlin, Rickard.

MUSIC and ART



Standing: J. Andrews, Kreckman, Cronk. Seated: Bain, Johannsen, Ortlip, Hillpot, L. Andrews.



MISS ELLA HILLPOT

ELLA M. HILLPOT.....	Piano and Theory
WILFRED C. BAIN, A.M., B.MUS.....	Voice and Theory
ALFRED D. KRECKMAN, B.MUS.....	Piano and Theory
ALTON M. CRONK, A.B., B.MUS.....	Piano, Public School Music
ANDREA JOHANNSEN, B.S.....	Voice
JOHN M. ANDREWS, B.MUS.....	Violin
LILA S. ANDREWS, B.MUS.....	Woodwind
AILEEN ORTLIP.....	Art

RELIGIOUS EDUCATION

PROF. F. H. WRIGHT



FRANK H. WRIGHT, A.M., B.D.	Philosophy, Religious Education
CLAUDE A. RIES, A.M.....	Biblical Literature
JOSEPHINE RICKARD, A.M.....	Religious Education
STANLEY W. WRIGHT, A.B.....	Biblical Literature
GUDRUN KARTEVOLD, A.B., M.R.E.....	Religious Education



Standing: S. Wright, Rickard. Seated: Ries, F. Wright, Kartevold.

SOCIAL SCIENCES



Standing: Rork, Leonard, Moxey, Paine. Seated: Dilks, Gillette, B. Fancher, Z. Fancher, Moses, Pool.

BESSIE M. FANCHER, B.S., A.M.	Education
FRIEDA A. GILLETTE, A.M.	History, Political Science
STEPHEN W. PAINE, A.M., Ph.D.	History
CRYSTAL L. RORK, A.M.	Sociology
EDITH A. DILKS, B.S., Ed.M.	Education
ALICE POOL, A.M.	Education
M. BELLE MOSES, A.B.	Sociology
ZOLA K. FANCHER, A.B.	Economics
MARGARET MOXEY, B.S.	Physical Education, Hygiene
FRANK L. LEONARD, A.B.	Physical Education



Miss BESS FANCHER

Mrs. P. H. BOWEN



PHILINDA S. BOWEN	Principal, Latin
ALICE POOL, A.M.	French
BESSIE M. FANCHER, B.S., A.M.	English
PERRY TUCKER, A.M.	Science
ZOLA K. FANCHER, A.B.	Mathematics
LOIS B. SMITH	Drawing, English
MARY F. BAIN, A.B.	History
EDITH F. LEE	Study Room Attendant
ANNA FILLMORE	Religious Education

SEMINARY

Standing: Lee, B. Fancher, Z. Fancher. Seated: Tucker, Fillmore, Pool, Smith, Bowen, Bain.





Standing: Smith, Andrus. Seated: R. Luckey, Muir, Luckey, Rickard, Stockin.

EXECUTIVE LITERARY BOARD

PERSONNEL

PRESIDENT JAMES S. LUCKEY.....	<i>Chairman</i>
MISS JOSEPHINE RICKARD.....	<i>STAR Adviser</i>
MR. WILLARD G. SMITH.....	<i>BOULDER Adviser</i>
WILLIAM MUIR.....	<i>STAR Editor</i>
HOWARD G. ANDRUS.....	<i>BOULDER Editor</i>
ROBERT LUCKEY.....	<i>Lecture Course Manager</i>
GORDON STOCKIN.....	<i>Vice President, Student Council</i>



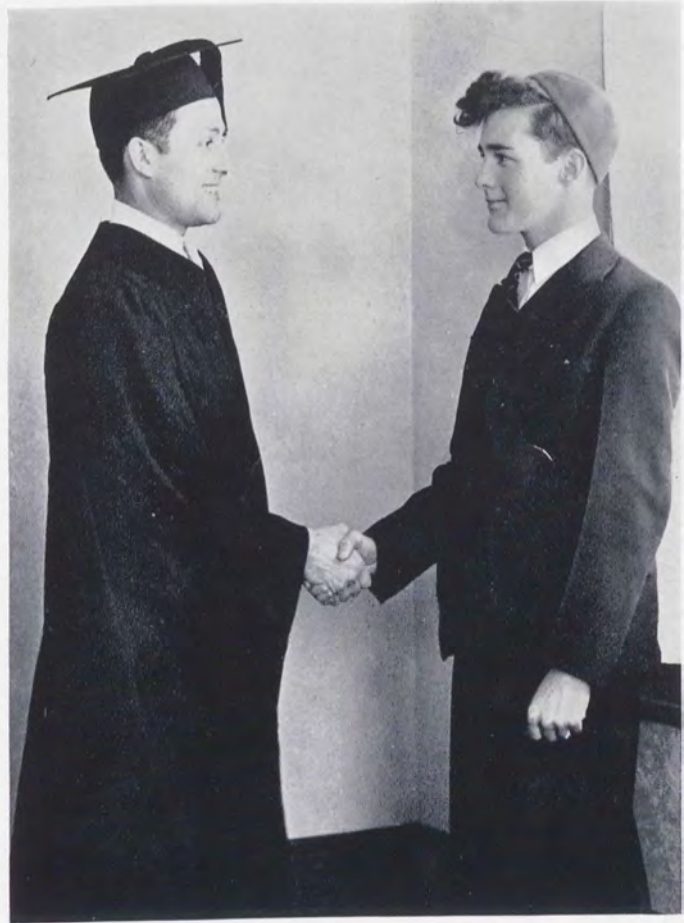
OFFICERS

LAURENCE SAILE.....	<i>President</i>
GORDON STOCKIN.....	<i>Vice President</i>
HAZEL FOX.....	<i>Secretary</i>

STUDENT COUNCIL

Top Row: Wright, Foster, Hess, Dusch, Donelson, Schlaffer. Second Row: Kartevold, Stockin, Fox, Saile. Third Row: Sellman, Ferchen, Bohlayer, Scheimer, Hopkins, Watson.





BOOK THREE



The Classes

SENIOR OFFICERS

PRESIDENT	-	-	-	-	William Foster
VICE PRESIDENT	-	-	-	-	Wesley Churchill
SECRETARY	-	-	-	-	Elizabeth Sellman
TREASURER	-	-	-	-	Lina Pettit
ADVISERS	-	-	-	-	Miss Crystal Rork Mr. Frank Leonard



CLASS OF 1937



JAMES BENCE
Marion Center, Pa.
Gold—Social Science

Ministerial Ass'n 1, 2, 3, 4, Pres. 4;
Social Science Club 2, 3, 4; Photo-
graphy Editor Boulder 3; Asst. Mgr.
Lecture Course 4; W.Y.P.S. 1, 2, 3, 4;
Extension Work 1, 2, 3, 4; Y.M.W.B.
3, 4, Treas. 3, Pres. 4.

PAULINE BENTLEY
Houghton, N. Y.

Gold—Education, Social Science

Class Basketball 4; Forensic Union 4;
Expression Club 4; Social Science Club
2, 3, 4; Chorus 1, 2.



WORTH LARUE COTT
Houghton, N. Y.

Purple—General Science

Assistant Business Manager Boulder 3;
Pasteur Pre-Medic Club; Social Science
Club.



WESLEY CHURCHILL
West Valley, N. Y.

Purple—Education, General
Science

Class Basketball 1, 2, 3, 4;
Purple Basketball 1, 2, 3; Var-
sity Basketball 2, 3, 4; Purple
Baseball 1, 2, 3, 4; Varsity
Baseball 2, 3, 4; Forensic Union
4; Der Rheinverein 4; Social
Science Club 4; Chorus 2; Ad-
vertising Manager Boulder 3;
Touch Football 3, 4; Class
Vice Pres. 4; Student Council
3; Class Volleyball 3, 4.



WILFRED DUNCAN
Appleton, N. Y.

Purple—General Science

Forensic Union 4; Expression Club 2,
3, 4; Pasteur Pre-Medic Club 1, 2, 3,
4; Chapel Choir 1, 3, 4; Chorus 1, 2,
3, 4; Owls Club 3, 4; Subscription
Manager Boulder 3; Star 3, 4, Business
Manager 4, Circulation Manager 3.

BARBARA COLE
Delevan, N. Y.

Purple—Social Science

Class Basketball 1, 2, 3, 4; Purple
Basketball 1, 2, 3; Varsity Basketball
2, 3, Captain 3; Tennis 1, 2; Track
and Field 1, 2; College Choir 3;
Chorus 1; Chapel Choir 4; Literary
Contest 1, 2; Der Rheinverein 1;
Social Science Club 3, 4.



O. ARLENE DUSCH

Ebenezer, N. Y.

Purple—Mathematics, Education

Expression Club 1, 2, 3, 4; Pasteur Pre-Medic Club 4; Social Science Club 3, 4; Student Council 4; Dorm Council 4; Social Chairman 4; Chorus 1, 2, 3, 4; W.Y.P.S. 1, 2, 3, 4; Class Secretary 2, 3.

CLEMENCE EDDY

Panama, N. Y.

Gold—Social Science

Class Basketball 3, 4; Class Volleyball 3, 4; Expression Club 4; Der Rhein-verein 4; College Choir 4; Chapel Choir 3; Chorus 3, 4.



LEE EINFELDT

Houghton, N. Y.

Purple—Religious Education

Mission Study Club 1, 2, 3, 4; Ministerial Association 1, 2, 3, 4; W.Y.P.S. 1, 2, 3, 4; Touch Football 3, 4.



LYNN EINFELDT

Houghton, N. Y.

Gold—Religious Education

Mission Study Club 3, 4; Pres. 3, 4; Pasteur Pre-Medic Club 1; Ministerial Association 1, 2, 3, 4; College Choir 4; Chapel Choir 3; Chorus 1, 2, 3; Boulder Staff 3; Extension Work 3, 4; Vice President Y.M.W.B. 4; Touch Football 3, 4.



CECIL D. ELLIOTT

Falconer, N. Y.

Gold—History

Track and Field 2; Literary Contest 1; Oratorical Contest 1; Mission Study Club 1, 2, 3, 4; Ministerial Association 2, 3, 4; Orchestra 1, 2, 3, 4; Secretary and Reporter of Mission Study Club 3; Touch Football 3, 4.

BRUCE FRED FAIRFIELD

Hinsdale, N. Y.

Purple—General Science

Class Basketball 3, 4; Pasteur Pre-Medic Club 3; Social Science Club 3, 4; Chapel Choir 3; Class Volleyball 3, 4; Touch Football 3, 4.

ESTHER FANCHER

Houghton, N. Y.

Gold—Education, French

Cercle Français 1, 2, 3, 4; Forensic Union 2, 3, 4; Expression Club 2; Social Science Club 4; Secretary Cercle Français 2; Class Treasurer 1.





WILLIAM E. FOSTER
Lansing, Mich.
Gold—Religious Education

Gold Baseball 1, 2, 3, 4; Varsity Baseball 2, 3, 4; Gold Basketball 2, 4; Class Basketball 2, 3, 4; Track and Field 1, 2, 3, 4; Strong Bible Reading 3; Forensic Union 2, 3; Student Council 3, 4; Ministerial Association 1, 2, 3; Chorus 1, 2; Band 2, 3; Orchestra 1, 2; College Quartet 2, 3, 4; Photography Editor Boulder 3; Pres. Y.M.-W.B. 3; Extension Work; Class President 1, 3, 4, Vice Pres. 2; Touch Football 3, 4; Ministerial Association, President 2, Treasurer 1.



HAZEL FOX
Houghton, N. Y.
Purple—French

Cercle Français 1, 2, 3, 4, Vice Pres. 4; Forensic Union 3, 4, Sec. 4; Expression Club 1, 2, 3, 4; Inter-Class Debate 3, 4; Varsity Debate 3, 4; Student Council 2, 3, 4; Associate Editor Boulder 3; Extension Work 2, 3, 4; Secretary Student Council 4; Class Secretary 1; Class Vice Pres. 3.



ROBERT LUCKEY
Houghton, N. Y.

Purple—Mathematics, Physics, Education

Class Basketball 1, 2, 3, 4; Purple Basketball 2, 3, 4; Varsity Basketball 2, 3, 4; Tennis 1, 2, 3, 4; Varsity Tennis 1, 2, 3, 4; Expression Club 3, 4; Der Rheinverein 3, 4; Class Volleyball 3, 4; College Choir 1, 2, 3, 4; Chorus 2, 3, 4, Soloist 2, 3; Business Manager Boulder 3; Executive Literary Board 4; Business Manager Lecture Course 4; W.Y.P.S. 1, 2, 3, 4, Officer 1, 2, 3, 4; Touch Football 3, 4.

RUTH McMAHON
Belfast, N. Y.

Purple—Public School Music

Expression Club 3, 4; Music Club 1, 2, 3, 4; College Choir 3, 4; Chorus 1, 2, 3, 4, Soloist 3, 4; Madrigals 1, 2, 3, 4.



KATHRYN L. JONES
Huntington, N. Y.
Gold—English.

Class Basketball 3; Forensic Union 4; Expression Club 3, 4; Pres. 4; Social Science Club 3, 4.

ELLEN LAURA MILLS
Sandusky, N. Y.

Purple—History, Social Science

Expression Club 2, 4; Social Science Club 2, 3, 4, Program Committee 4; Chorus 1, 3; W.Y.P.S. 2, 3, 4.

WINTON H. HALSTED
Branchport, N. Y.

Purple—Religious Education

Class Basketball 2, 3, 4; Purple Basketball 4; Mission Study Club 2, 3, 4, President 2; Ministerial Association 1, 2, 3, 4; Owls Club 3; Class Volley Ball 3, 4; Chapel Choir 1; Chorus 1, 2; Boulder Staff 3; Star Staff 3; W.Y.P.S.; Touch Football 3, 4.



HELEN PAUL PAINE
Houghton, N. Y.
Gold—English

MARY E. PAINE
Houghton, N. Y.
Purple—Social Science, English

Class Basketball 1, 2, 4; Purple Basketball 1, 2, 4, Captain 4; Varsity Basketball 4; Varsity Tennis 2, 3, 4; Track and Field 1, 2, 3, 4; Forensic Union 2, 3, 4, Poster Chairman and Corresponding Secretary 2, 3, 4; Expression Club 1, 2, 3, 4; Der Rheinverein 2, 3; Social Science Club 3, 4; Student Council 1; College Choir 1, 2, 3; Chorus 1, 2, 3; Class Vice President 1; Secretary-Treasurer Athletic Association.



LINA PETIT
Lockport, N. Y.
Gold—Social Science

Expression Club 3, 4; Social Science Club 2, 3, 4, Secretary-Treasurer 2, 3; Boulder Staff 3; College Choir 1; Class Treasurer 4.



MERRITT B. QUEEN
Croton-on-Hudson, N. Y.
Purple—English

Tennis 1, 2, 3, 4, Varsity 2; Literary Contest 1; Forensic Union 2, 3, 4, President 4; Expression Club 2, 3, 4, Vice President 2, President 3; Der Rheinverein 4, Vice President 4; Social Science Club 3, 4; Interclass Debate 1, 2, 3, 4; Varsity Debate 2, 3, 4, Captain 4; Owls, Club 2, 3, 4, President 2; Student Council 2; Ministerial Association 1, 2, 3, 4, Vice President 4; College Choir 2, 3, 4; Chapel Choir 1; Chorus 1, 2, 3; Ass't. Business Manager Boulder 3; Subscription Manager Lantern 2; Star Staff 1, 2, Religious Editor 2; Touch Football 4; Extension 1, 2, 3, 4, Secretary 4.



ELIZABETH RATCLIFFE
Naples, N. Y.

Purple—Public School Music

Class Basketball 1, 2, 4; Purple Basketball 1, 2, 3, 4; Varsity Basketball 2, 3, 4; Varsity Tennis 2, 3, 4; Track 1, 2, 3, 4; Cercle Français 1, 2, 3; Forensic Union 2, 3; Expression Club 2, 3; Music Club 1, 2, 3, 4; Class Volleyball 3, 4, Captain 3; Chorus 1, 2, 3, 4; Band 1, 2, 3, 4; Orchestra 1, 2, 3, 4; String Quartet 3; Ass't. Sports Editor Boulder 3; W.Y.P.S. 1, 2, 3, 4.



BEULAH RONEY
Patchogue, N. Y.
Gold—Social Science

RANSOM RICHARDSON
Fillmore, N. Y.
Purple—English

Literary Contest 1; Der Rheinverein 4; Class Volleyball 4; Touch Football 3, 4.



ISABELLE RIGGS

Plattsburg, N. Y.

Gold—Religious Education

Class Basketball 3; Track 3; Literary Contest 1; Oratorical Contest 1; Mission Study Club 1, 4; Ministerial Association 1, 2, 3, 4; Secretary 3; Chapel Choir 3, 4; Chorus 1, 2, 3, 4; Extension Work 1.

LAURENCE H. SAILE

Batavia, N. Y.

Gold—General Science

Expression Club 3, 4; Pasteur Pre-Medic Club 1, 2, 3, 4; Secretary 3; Chorus 1, 2, 3, 4; Band 1, 2, 3; Orchestra 1, 2, 3, 4; Touch Football 4; Class Volleyball 3; Student Council 1, 4, President 4.



MAGDALENE KATHARINE SCHEHL

Webster, N. Y.

Gold—Social Science

Expression Club 3, 4; Music Club 1; Dorm Council 4; Chorus 1, 2, 3, 4; College Choir 1, 2; Boulder Staff 3; W.Y.P.S. 1, 2, 3, 4; Extension Work 1, 2, 3, 4; Class Treasurer 2.

WALTER SCHOGOLEFF

Batavia, N. Y.

Purple—Education, General Science

Purple Baseball 2, 3, 4, Captain 3, 4; Varsity Baseball 2, 3, 4, Captain 4; Class Basketball 1, 2, 3, 4; Purple Basketball 1, 2, 3, 4, Captain 3, 4; Varsity Basketball 2, 3, 4, Captain 4; Varsity Tennis 2, 3, 4; Coach Class Girls 2, 3, 4; Coach Purple Girls 2, 3, 4; Class Volleyball 3, 4; Touch Football 3, 4; Forensic Union 3, 4; Pasteur Pre-Medic Club 1, 2; Sports Editor Star 4; Sports Editor Boulder 3; Chorus 1.

JOSEPHINE SCINECKE

Machias, N. Y.

Purple—Social Science

Track 2; Cercle Français 1, 2; Expression Club 2, 3, 4; Social Science Club 2, 3, 4; Paleolinguists 2; Class Volleyball 3; College Choir 2, 3, 4; Chorus 1, 2.



ELIZABETH SELLMAN

Ypsilanti, Mich.

Purple—Education, Social Science

Forensic Union 1, 2, 3, 4, Secretary 3; Der Rheinverein 3; Social Science Club 2, 3, 4; Student Council 3, 4; Dorm Council 2, Secretary 2; Chapel Choir 2; Chorus 1, 2, 3; W.Y.P.S. 1, 2, 3, 4, Secretary 4; Extension Work 1, 2, 3, 4; Secretary Y.M.W.B. 2; Class Secretary 4.

DOROTHY SEIGENTHALER

Alliance, Ohio

Gold—Religious Education

Chorus 1, 2, 3; W.Y.P.S. 1, 2, 3, 4; Mission Study Club 1, 2, 3, 4; Ministerial Association 2.



PRUDENCE SHEFFER

Youngsville, Pa.

Purple—Religious Education

Class Basketball 1, 2, 3, 4; Purple Basketball 1, 2; Strong Bible Reading 3; Oratorical Contest 1; Mission Study Club 3, 4; Ministerial Association 1, 2, 3, 4, Secretary 1; Class Volleyball 3; College Choir 4; Chapel Choir 3; Chorus 1, 2, 3, 4; Extension Work 1, 2, 3, 4.

ALLEN H. SMITH

Nyack, N. Y.

Gold—General Science

Class Basketball 3, 4; Tennis 1, 4; Track 3, 4; Touch Football 3, 4; Class Volleyball 3, 4; Cercle Français 1, 2; Forensic Union 2, 3, 4; Pasteur Pre-Medic Club 4; College Choir 2, 3, 4; Chorus 1, 2, 3, 4; Band 1, 2, 3; Boulder Staff 3; W.Y.P.S. 1, 2, 3, 4.



GERALD BENNET SMITH

Houghton, N. Y.

Gold—Education, General Science

Varsity Tennis 2, 3, 4; Class Volleyball 4; Der Rheinverein 3; Touch Football 3, 4; Art Editor Boulder 3.



ELLEN STICKLE

Freedom, N. Y.

Purple—Education, French

Class Basketball 3; Cercle Français 3, 4; Mission Study Club 1, 2, 3, 4; Chorus 1, 2, 3, 4; W.Y.P.S. 1, 2, 3, 4.

FRANK GORDON STOCKIN, JR.

Chaffee, N. Y.

Purple—Latin, Education, French

Cercle Français 1, 2, 3, 4, President 3, 4; Expression Club 1, 2; Paleolinguists 1, 2, 3, 4, Secretary 3, President 4; Student Council 4; Executive Literary Board 4; Boulder Staff 3.



BETTY STONE

Buffalo, N. Y.

Purple—Social Science

Class Basketball 2, 3, 4; Purple Basketball 2, 3, 4; Varsity Basketball 2, 3; Tennis 3, 4; Track 3; Class Volleyball 3, 4; Cercle Français 2; Expression Club 2, 3, 4; Social Science Club 3.

GORDON STORMS

Sandusky, N. Y.

Purple—General Science

Mission Study Club 3, 4; Chorus 1, 2; W.Y.P.S. 3, 4.





WESLEY THOMAS

Ellwood City, Pa.

Gold—General Science

Class Basketball 3, 4; Track 2, 3, 4;
Forensic Union 4; Expression Club 3,
4; Der Rheinverein 3, 4, President 4;
Pasteur Pre-Medic Club 2, 3; Social
Science Club 3; College Choir 3, 4;
Chapel Choir 3; Chorus 3, 4; Touch
Football 4, Captain 4.

MARGUERITE J. WARNER

Angelica, N. Y.

Gold—Social Science

Expression Club 3, 4; Social Science
Club 3, 4.



FLORENCE WRIGHT

Houghton, N. Y.

Gold—Education, English

Paleolinguists 2, 3; W.Y.P.S. 2, 3, 4.



JANE ELIZABETH ZOOK

Friendship, N. Y.

Purple—Education, General
Science

Literary Contest 1; Pasteur
Pre-Medic Club 1, 2, 3, 4, Vice
President 3, President 4; Col-
lege Choir 3, 4; Chorus 2, 3,
4; Feature Editor Boulder 3;
Class Treasurer 3.



JUNIORS
SOPHOMORES
FRESHMEN
BIBLE SCHOOL

UNDERGRADUATES





CLASS OF 1938



JUNIOR OFFICERS

President DEAN THOMPSON
Vice President JOHN HOPKINS
Treasurer WALTER FERCHEN
Adviser MISS BESS FANCHER

Top Row: Thompson, Tuthill, Wright, Dayton, Smith, Andrus, Davis, Bates, Sherman, Corsette, Webster, Curty. *Second Row:* Scott, Gare, Scott, Bain, Hart, Strickland, Smith, Brown, DeGroff, Crosby, Miner, Goodemote. *Third Row:* Clement, Strong, Bantle, Myers, Wilday, French, Watson, Donley, Corteville, D. Keller, Wright, Parker. *Fourth Row:* Ferchen, Hopkins, Stevenson, Sprague, Buffan, Driscoll, Charlesworth, Dorsey, Slater, M. Wright, Kahler. *Fifth Row:* Kidder, Walton, Bohlayer, Leonard, Miller, Powell, Blanchard, Baker, Bechtel, Shafer, Brownlee, Hammond, Brown. *Sixth Row:* Shaffer, Donohue, Frost, Rose, Madwid, Peterson, Purdy, Pratt, Morse, Bassage.

JUNIOR CLASS

CLASS OF 1939





SOPHOMORE OFFICERS

<i>President</i>	EDWARD WILLETT
<i>Vice President</i>	HARLAN TUTHILL
<i>Secretary</i>	LOIS ROUGHAN
<i>Treasurer</i>	VICTOR MURPHY
<i>Advisers</i>	MISS FRIEDA GILLETTE
	MISS MARGARET MOXEY

Top Row: Gamble, Beach, Tuthill, Gant, Densmore, Whiting, Fox, Meneeley, Updyke, Elliott, Hurd, Swarthout. *Second Row:* Murphy, Daniels, Newcomb, Jessop, Hilgeman, Van Ornum, Hadley, Fero, Carlson, Crandall, Roughan, W. Elliott. *Third Row:* Smith, Douglass, Jones, Fox, Markey, Ratcliff, Moshaug, Homan, Foss, VanSkiver, Briggs, Lytle, Holley. *Fourth Row:* Carpenter, Roberts, Stroud, F. Foss, Bauer, Ferm, Willett, Roberts, Gates, Kaine, Smith. *Fifth Row:* Taylor, Kingsbury, Higgins, Smith, Crandall, Chamberlain, Robbins, Brindisi, Allen, Dunckel, Scott, Anderson. *Sixth Row:* Grosvenor, York, Hess, Giles, Sturgis, Paine, Bedford, Nickerson, Parks, Montgomery.

SOPHOMORE CLASS



CLASS OF 1940



Jack West

FRESHMAN OFFICERS

<i>President</i>	HENRY RANDALL
<i>Vice President</i>	PARK TUCKER
<i>Secretary</i>	ESTHER WATROUS
<i>Treasurer</i>	HALWARD HOLMAN
<i>Adviser</i>	MR. WILFRED BAIN

Top Row: Taylor, McCall, Smith, Swan, Smith, Tucker, Sheffer, Simon, Schooner, Morris, Henry, Stanton, Shaffner, Randall, Mix, Nussey, Bowditch. *Second Row:* Vyverberg, Ortlip, Westbrook, Albany, Gilmour, Paul, Homan, Carlson, Kauffman, Eggleston, Wilbur, Burns, Belden, Hermann, Mann, Strong. *Third Row:* Blauvelt, Torrey, Feldt, Varley, Culbertson, Havill, Morse, Madwid, Scheimer, Hill, Knapp, Lancaster, McLaughlin, Wolfgruber, Crofoot, Saile, Tiffany. *Fourth Row:* Crapo, Mills, Clader, Prutsman, Smith, Gleason, Block, Cheney, Fisk, Wheeler, Patterson, Dayton, Lietzke, Moody, M. Harmon, Bartleson, E. Harmon. *Fifth Row:* Reynolds, Cagwin, Piatt, Van Antwerp, McCarthy, Schuyler, West, Weaver, L. Smith, A. Holden, Wells, Stocker, Danner, Edwards. *Sixth Row:* Urban, Watrous, Veazie, Hewey, Schaner, Schuyler, Cronk, Owens, Hackett, Lyons, Stowe, Crocker, Looman, Cheney.

FRESHMAN CLASS



BIBLE SCHOOL

HAZEL GREEN
Holland, N. Y.
Gold—Religious Education
Chorus 1, 2; W.Y.P.S. 1, 2.



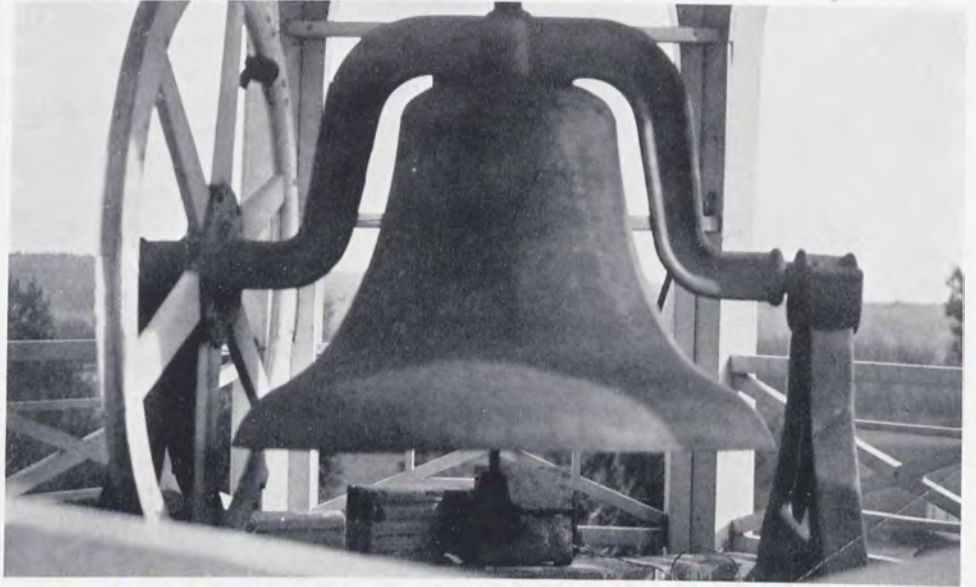
NEWTON SNIDER
Great Valley, N. Y.
Gold—Religious Education
Chorus 1, 2; W.Y.P.S. 2; Ministerial Association 1, 2; Member of Mission Study.

MARY SINCLAIR
Wyoming, Penna.
Gold—Religious Education
W.Y.P.S. 2; Ministerial Association 2.



Top Row: Green, Coffey, Getchel, Snider. *Second Row:* Sinclair, McComb, Holley. *Third Row:* Fillmore, Wright, Wolfe.





SEMINARY





CHARLES ARNOTT
Brooklyn, N. Y.
Gold

MARIAN BOMMER
Kenmore, N. Y.



MARJORIE CLOCKSIN
Houghton, N. Y.
Gold—Latin

Basketball 1, 2; Chorus 1, 2, 4; High School Choir 2, 4; Church Choir 2; W.Y.P.S. 4; High School Girls' Quartet 2, 4; Class Secretary-Treasurer 2.



HAROLD HULL
Durham, N. Y.

Gold—Mathematics, History

Basketball 3, 4; Four year course in two years.

ROBERT KRAUSE
Houghton, N. Y.

Gold—Mathematics, Latin

Touch Football 3, 4.



CLARA JANE LINN
Williamstown, W. Va.

Purple

President of Class 4; Chapel Choir 4; High School Varsity Basketball 4; Glee Club 4; W.Y.P.S. 4.

ALICE McKINNEY
Houghton, N. Y.
Gold—Latin, History

Vice President Student Body 3; President Class 3; Secretary-Treasurer of Class 2; President Light Bearers 4; Vice President Y.M.W.B. 2; President Y.M.W.B. 4; Y.M.W.B. 1, 2, 3, 4.



MARTHA NEIGHBOUR

Houghton, N. Y.

Gold—Science, Latin

Vice President Senior Class 4; Basketball 4; Extension Work 4; Chorus 4; S. S. Pianist 4; President S. S. Class 4.

R. HONOR ROBERTS

New York City, N. Y.

Gold—History

Pasteur Pre-Medic Club 4; Expression Club 4; Hiking Club 4; Chorus 4; High School Glee Club 4; W.Y.P.S. 4.



WARREN TUTTLE

Wilkes-Barre, Penna.

Purple—Science

President Student Body 4; Volley Ball 4; Touch Football 4; High School Choir 4; Track 4; Tennis 4.



SEMINARY UNDERGRADUATES

Top Row: Sellman, J. Fancher, Eyler, Scott, B. Smith, D. Paine. *Second Row:* R. Fancher, E. Preston, Crouch, Beach, Stone, B. McCarty, Tuttle. *Third Row:* D. Eyler, Randall, M. Woolsey, Cone, Wright, Littorin, G. Fancher. *Fourth Row:* V. Clocksin, P. Clocksin, Stuart, Ries, A. Smith, Crandall, Dunning, Rathbon. *Fifth Row:* Clark, R. McCarty, Powers, L. Dunning. *Sixth Row:* McKinney, Parker, Woolsey, Littorin, Prutsman, Lange.



BOOK FOUR

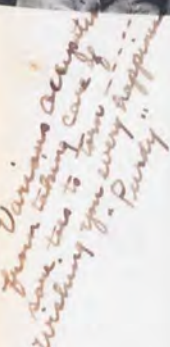


RELIGIOUS
MUSIC
ORGANIZATIONS
ATHLETICS

Activities



RELIGIOUS



Cheney, Patterson, Riggs, D. Smith. *Eighth Row*: Marshall, Bassage, Donley, Mills, Bohlayer, Brownlee, Parks, Neighbour, Crapo, Roberts, M. Smith, Slater, Cagwin, Anderson. *Ninth Row*: Allen, Smith, Brindisi, Duncan, Duncel, Grosvenor, A. Smith, Sinclair, Bryant, Seigenthaler, McGowan, E. Fancher, Edwards, McComb. *Tenth Row*: Clocksin, Eldridge, Dayton, Moody, M. Harmon, E. Harmon, R. Fancher, G. Fancher, Stocker, D. Eyer, Scott, Snider, Crocker, Looman, Ratcliffe. *Eleventh Row*: Owens, Bence, Wright, G. Blauvelt, Willett, McKinney, Sellman, Schehl, Queen, Stowe, Littorin. *Twelfth Row*: Purdy, D. Smith, Robbins, Hammond, Rose, Clark, Pettit, Clocksin, Rathbon.

Extension Secretary.....MERRITT QUEEN
Devotional Secretary.....ROBERT LUCKEY
Social Secretary.....KATHERINE SCHEHL
President of the Y.M.W.B.....JAMES BENCE

High School Representative, ALICE MCKINNEY



Top Row: Swarthout, Welfe, Whiting, Nelson, Wood, Getchel, Davis, Lytle, Sprague, Elliott, Halsted, Morris. *Second Row:* Curty, Carlson, Paul, Daniels, Homan, Albany, Snider, Smith, Nussey, Ortlip, Sherman. *Third Row:* Holley, Webster, Parker, Crosby, Jessop, Hill, Brindisi, Gilmour, Elliott, Barwell. *Fourth Row:* Sinclair, Purdy, Elliott, Patterson, Coffey, Smith, Grosvenor, Riggs, Dunckel, Parks. *Fifth Row:* Wright, Owens, Queen, Bence, Dayton, Ries, Sheffer, Hilgeman, Schlafer.

MINISTERIAL ASSOCIATION

OFFICERS

<i>President</i>	JAMES BENCE
<i>Vice President</i>	MERRITT QUEEN
<i>Secretary-Treasurer</i>	WILBER DAYTON
<i>Chairman of Program Committee</i>	PRUDENCE SHEFFER
<i>Critic Reporter</i>	FREDERICK SCHLAFER
<i>Faculty Adviser</i>	PROF. F. H. WRIGHT

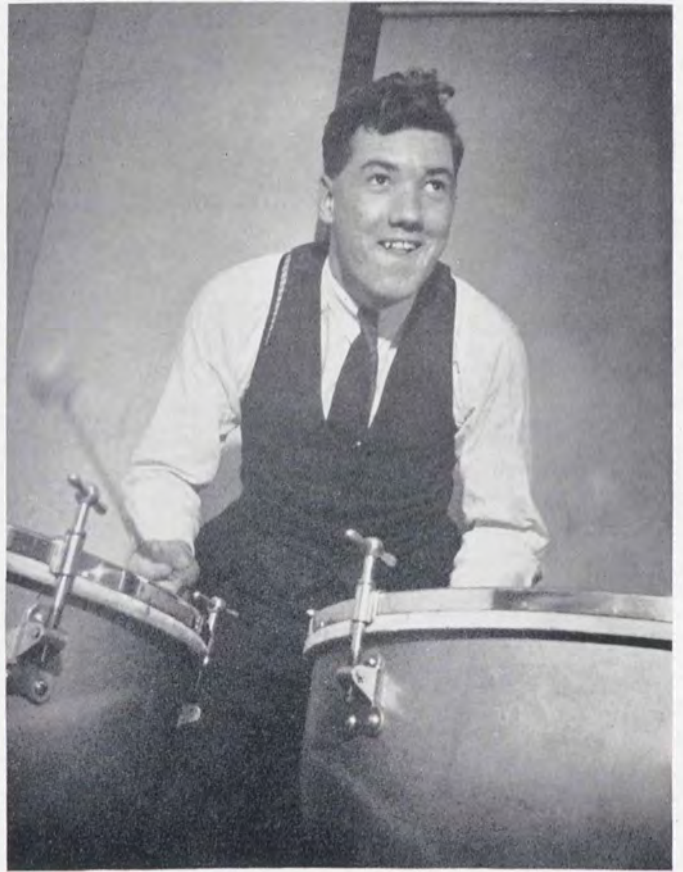
OFFICERS

<i>President</i>	GEORGE FAILING
<i>Vice President</i>	WINTON HALSTED
<i>Secretary-Treasurer</i>	EULAH PURDY

RELIGIOUS EDUCATION MAJORS

Top Row: Wood, Sherman, Whiting, Nelson, Kauffman, Einfeldt, Elliott, Smith, Dayton, Sprague. *Second Row:* Swarthout, Albany, Paul, Ortlip, Nussey, Barwell, Carlson, Donelson, Jessop, Gilmour, Lytle. *Third Row:* Webster, Crosby, Curty, Slater, Homan, Sheffer, Hill, Brindisi, Holley, Elliott. *Fourth Row:* Smith, Huff, Owens, Riggs, Parker, Mills, Stocker, Patterson, Seigenthaler, Parks, Grosvenor. *Fifth Row:* Merriis, Purdy, Ries, Kartevold, Wright, Halsted, Davis, Einfeldt, Daniels.





CHOIR
ORCHESTRA
BAND
CHAPEL CHOIR
MUSIC CLUB

MUSIC





Top Row: Tuthill, Thompson, A. Smith, Luckey, Queen. *Second Row:* Einfeldt, Fester, Hilgeman, Hurd. *Third Row:* York, Homan, Taylor, Eddy, Holley, Crosby, Hopkins, Chamberlain, Bedford, Ferchen, Thomas. *Fourth Row:* Miller, Donley, Roughan, Bain, Updyke, Strickland, Arlin, Bchlayer, Hadley. *Fifth Row:* Giles, Madwid, Scinecke, McMahon, Brown, Leonard, Hale, Johannsen, Powell.

A CAPPELLA CHOIR

PERSONNEL

PROFESSOR WILFRED C. BAIN, *Conductor*

SOPRANO

Doris Bain
Ruth McMahon
Leona Strickland
Andrea Johannsen
Edith Arlin
Genevieve Hale
Josephine Scinecke
Emma Rae Bechtel
Josephine Hadley
Arlenne Leonard
June Powell
Marian Brown

TENOR

Robert Homan
Halward Homan

Clemence Eddy

Matthew Lancaster
Harlan Tuthill
Marcus Wright
Dean Thompson
Robert Danner

ALTO

Edith Crosby
Luella Fisk
Prudence Sheffer
Jane Zook
Lois Roughan
Hilda Giles
Marjorie Updyke
Ellen Donley

June Miller

Mary Madwid

BASS

John Hopkins
Robert Crosby
Merritt Queen
David Paine
Wesley Thomas
James Hurd
Walter Ferchen
Wayne Bedford
George Hilgeman
Robert Luckey
Richard Chamberlain
Allen Smith





PERSONNEL

PROFESSOR ALTON M. CRONK, *Conductor*

VIOLINS

John M. Andrews,
Concertmeister
Madeline Block
Mariam Crofoot
Gordon Curty
Cecil Elliott
Jeannette Frost
Anne Madwid
Aileen Ortlip
Ann Schlegel
Harold Skinner
Bertha Reynolds

VIOLA

Betty Ratcliffe
Arlington Visscher

CELLO

Barbara Cronk
Ila McLaughlin
Claribel Saile
Doris Taylor

PIANO

Eunice Kidder

FLUTE

Zilpha Gates
Alys Jane Holden

CLARINET

James Buffan
Vera VanSkiver

BASSOON

Lila Andrews

TRUMPET

Carleton Hermann
William Grosvenor

TROMBONE

Melvin Morris
Robert Strong
Laurence Saile

FRENCH HORN

Sanford Smith
Chester Lusk

TYMPANI

Walter Whybrew

PERCUSSION

Arthur Mann

LIBRARIAN

Walter Whybrew

LITTLE SYMPHONY ORCHESTRA

Back Row: Whybrew, Mann, Ortlip, Schlegel, Madwid, VanSkiver, Skinner, Buffan, Reynolds, Kidder, Holden, Gates, Visscher, Smith, Ratcliffe, Lusk, Ortlip, Murphy, Grosvenor, Strong, Hermann. *Front Row:* Hewey, Elliott, Frest, Crofoot, Andrews, Curty, Cronk, Saile, McLaughlin, B. Cronk, D. Taylor, L. Taylor.





Holden, Buffan, Schaner, Elliott, Frost, Crofoot, Hadley, Taylor, Ratcliffe, Grosvenor, Smith, Cheney, Andrews, Strong, Mann.



PERSONNEL

PROFESSOR JOHN M. ANDREWS, *Conductor*

TRUMPETS

Elizabeth Cheney
William Grosvenor
Robert Homan

TROMBONES

Arthur Mann
Walter Ratcliffe
Dorothy Smith
Robert Strong

BARITONES

Hubert Cagwin
Loran Taylor

FLUTES

Alys Jane Holden
Walter Sheffer

SAXAPHONE

Mildred Schaner

CLARINETS

James Buffan
Everett Elliott
Jeannette Frost
Vera VanSkiver
Robert Stanton

FRENCH HORN

Elizabeth Ratcliffe

SNARE DRUMS

Halward Homan

BASS DRUM

Josephine Hadley



Top Row: W. Elliott, Clader, Eyler, Beach, Taylor, Sheffer, Stanton, Ortlip, Buffan. *Second Row:* Duncan, Crandall, Hill, Bates, Foss, Murphy, Dunkel, Mann, Strong. *Third Row:* Moody, Wright, Brownlee, Watson, M. Foss, Bartleson, Linn, Cheney, Lietzke, Brandes, Hess. *Fourth Row:* Stocker, M. Harmon, Looman, Parks, Riggs, E. Harmon, Scheimer, Moshaug, Kidder, Veazie, Allen, Edwards.



CHAPEL CHOIR

PERSONNEL

PROFESSOR WILFRED C. BAIN, *Conductor*

SOPRANO

Doris Veazie
Clara Jane Linn
Edna Bartleson
Jean Leitzke
Evine Moshaug
Ruth Wright
Mabel Hess
Evelyn Scheimer
Ellen Harmon
Irene Edwards
Elizabeth Cheney
Isabelle Riggs

TENOR

Wilfred Duncan
Gerald Beach

Durwood Clader
Marvin Eyler
Willis Elliott
Kenneth Hill
Melvin Bates
Philip Crandall

ALTO

Marion Harmon
Mary Helen Moody
Catherine Parks
Ada Stocker
Miriam Foss
Mildred Looman
Eunice Kidder
Alys Jane Holden
Margaret Watson

Margaret Brownlee
Margaret Smith

BASS

Walter Sheffer
Henry Ortlip
Robert Stanton
Verdon Dunkel
Victor Murphy
George Friend
Arthur Mann
Robert Strong
Franklin Foss
Mac Wells
John Smith
Frank Taylor

MUSIC CLUB

Top Row: Brown, McMahon, Blauvelt, Kidder, Powell. *Second Row:* Danner, Leitzke, Chamberlain, Bartleson, Hermann. *Third Row:* Vandenburg, Ratcliffe, Hadley, Frost, Ferchen. *Fourth Row:* Homan, Holden, Foster, Hurd, Visscher.



1936-1937 CELEBRITIES



ROMAN TOTENBERG, *violinist*

On the evening of December 1, 1936 this young Polish virtuoso gave the first recital of the 1936-1937 Artist's series. Two weeks before his appearance at Houghton, Totenberg and his famous "Long-Strad" violin were featured at Town Hall, New York City.

SASCHA GORODNITZKI, *pianist*

Gorodnitzki came to Houghton with fresh heralding from his Carnegie Hall recital, where critics were unanimous in hailing him as a virtuoso of the first rank. His recital, on the evening of January 7, 1937, was well-encored.



LOUIS UNTERMAYER, *poet, critic, anthologist*

Appeared on the Houghton platform Tuesday morning, February 2. His lecture consisted of an informal discussion of poetry and culture and the reading of several of his own poems, notably "Caliban of the Coal Mines." His accomplishments in the field of literature are divided into four parts: poetry, parody, translations, and prose.

EARLE SPICER, *baritone*

Probably the most popular artist featured on Houghton's concert platform this year was Earle Spicer, baritone. He presented an unusual program, made up entirely of English and American ballads. His informality of manner as well as the character of his program led to encore after encore from his enthusiastic audience.





BOULDER
STAR
FORENSIC UNION
DEBATE
SOCIAL SCIENCE CLUB
PRE-MEDIC CLUB
EXPRESSION CLUB
LE CERCLE FRANCAIS
PALAEOLINGUISTS
DER RHEINVEREIN

ORGANIZATIONS



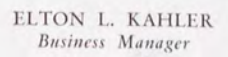


HOWARD G. ANDRUS
Editor-in-Chief

BOULDER EDITORIAL STAFF

<i>Editor-in-Chief</i>	HOWARD G. ANDRUS
<i>Associate Editor</i>	DEAN THOMPSON
<i>Administration</i>	{ RICHARD SLATER DORIS BAIN
<i>Statistics</i>	{ WALTER FERCHEN RUTH WALTON
<i>Activities</i>	{ NORVA BASSAGE ARTHUR LYNIP
<i>Sports</i>	{ RICHARD WRIGHT ELLEN DONLEY
<i>Music</i>	JEANNETTE FROST
<i>Religious</i>	WILBER DAYTON
<i>Photography</i>	LELAND WEBSTER
<i>Snapshots</i>	MELVIN BATES
<i>Copy</i>	ALICE ROSE
<i>Art</i>	RHEINHOLD BOHNACKER
<i>Faculty Adviser</i>	WILLARD G. SMITH

F
 © Elton L. Finkle
 "Dutets"



<i>Business Manager</i>	ELTON L. KAHLER
<i>Advertising Manager</i>	JOHN HOPKINS
<i>Subscription Managers</i>	{ ROBERT CROSBY
		} ESTHER BOHLAYER





THE STAR

EDITORIAL STAFF

<i>Editor-in-Chief</i>	WILLIAM MUIR
<i>Associate Editor</i>	ARTHUR LYNIP
<i>Managing Editor</i>	EDWARD WILLETT
<i>News Editor</i>	HOWARD ANDRUS
<i>Sports Editor</i>	WALTER SCHOGOLEFF
<i>Religious Editor</i>	WILBER DAYTON
<i>Feature Editor</i>	GEORGE HILGEMAN
<i>Copy Editor</i>	FREDERICK SCHLAFFER
<i>Faculty Adviser</i>	JOSEPHINE RICKARD

BUSINESS STAFF

<i>Business Manager</i>	WILFRED DUNCAN
<i>Circulating Managers</i>	DANIEL FOX, LELAND WEBSTER

REPORTERS

WALTER SHEFFER

VICTOR MURPHY

RAYMOND CARPENTER

DONALD KAUFMANN

LOIS ROUGHAN

CURTISS CRANDALL

PATSY BRINDISI



WILLIAM MUIR, *Editor*



WILLET

ROUGHAN

SOPHOMORE DEBATERS

CLASS DEBATE SCHEDULE

TEAMS

QUESTION

Semi-Finals:

Seniors vs. Juniors Public Utilities

Sophomores vs. Freshmen . . . Capital Punishment

Finals:

Sophomores vs. Seniors Installment Buying

The triumphant Sophomore team was composed of Edward Willett and Lois Roughan.





Top Row: Thomas, Crandall, Elliott, Smith, Sheffer, Swarthout, Kauffman, Bates. Second Row: Getchel, Andrus, S. Paine, Jessop, Ellis, Gilmour, Fero, Schogoleff, Schlafer. Third Row: Charlesworth, Bentley, Donley, Brownlee, Walton, Fancher, Roughan, Jones, Ratcliffe. Fourth Row: Brindisi, Hill, Donohue, Shaffer, Rose, Peterson, Basage, Churchill, Duncan. Fifth Row: Kahler, Thompson, M. Paine, Hurd, Queen, Fox, Hilgeman, Willett.

FORENSIC UNION

OFFICERS

President	MERRITT QUEEN
Secretary	HAZEL FOX
Critics	ARTHUR LYNIP
Varsity Debate Manager	EDWARD WILLETT
Sergeants-at-Arms	ELTON KAHLER
	GEORGE HILGEMAN
	JAMES HURD

DEBATE SCHEDULE

Opponent	Place	Houghton's Side
LeMoyne College	At Home	Affirmative
Elmira College	At Home	Affirmative
University of Buffalo	Buffalo	Negative
Niagara University	Niagara Falls	Negative
State Teacher's College	Buffalo	Negative
Allegheny College	Fredonia, Pa.	Negative
Geneva College (2)	Beaver Falls, Pa.	Affirmative, Negative
State Teacher's College	California, Pa.	Affirmative
State Teacher's College	Fairmont, W. Va.	Negative
State Teacher's College	Slippery Rock, Pa.	Tournament
St. Bonaventure College	Allegheny	Affirmative
Ithaca College	At Home	Affirmative
Hobart College	At Home	Affirmative

MEN'S DEBATE



Top Row: Brindisi, Schlafer, Willett, Paine. Second Row: Elliott, Queen, Lynip.

Roughan, Donley, Hurd,
Fox.



WOMEN'S DEBATE

WOMEN'S DEBATE SCHEDULE

<i>Opponent</i>	<i>Place</i>	<i>Side</i>
Nazareth College	At Home	Affirmative
Colgate University	At Home	Negative
Niagara University Collegiate Center	Rochester	Affirmative
Keuka College	Penn Yan	Negative
College of Saint Rose	Albany	Affirmative
Skidmore College	Saratoga Springs	Negative
Hartwick College	Oneonta	Affirmative

FROSH DEBATE SCHEDULE

<i>Opponent</i>	<i>Place</i>	<i>Side</i>
Niagara Falls High School	Niagara Falls	Negative
Niagara University Frosh	Niagara Falls	Negative
Chesbrough Seminary	Cbili	Optional
State Normal School	Geneseo	Optional

EXHIBITION DEBATES

Wellsville High School
Warsaw High School

Rushford High School

Machias High School
Bliss High School

FRESHMAN DEBATE

Top Row: Carlson, Boon,
Havill, Nussey. Second Row:
Sheffer, Varley, Taylor.





SOCIAL SCIENCE CLUB

OFFICERS

President HOWARD ANDRUS

Vice President FREDERICK SCHLAFER

Secretary ALICE ROSE

Program Committee { FREDERICK SCHLAFER,
Chairman
MISS BESS FANCHER
ELLEN MILLS
KATHRYN JONES

Top Row: Douglass, Kaine, Webster, Fox, Fairfield, Sheffer, Wright, Queen, Crandall, Bates, M. Wright. *Second Row:* Churchill, Brindisi, VanSquirer, Roughan, Paine, Strong, Bohlayer, Wright, Austen, P. Crandall, Ratcliffe. *Third Row:* Baker, Montgomery, Higgins, Brownlee, Schehl, DeGroff, Hess, Hoag, Lewis, Fancher. *Fourth Row:* Allen, Shafer, Scheimer, Donohue, Scinecke, Nickerson, Smith, Pratt, Paine, Dusch. *Fifth Row:* Driscoll, Stevenson, Anderson, B. Fancher, Rose, Andrus, Schlafer, Gillette, Jones, Bentley.

OFFICERS

President JANE ZOOK

Vice President MELVIN BATES

Secretary ARLIENNE LEONARD

PRE-MEDIC CLUB

Top Row: Schooner, Meneeley, Fairfield, VanOrnum, Fero, Douglass, Johnson, Murphy. *Second Row:* Burns, Wolfgruber, Taylor, Fox, Varley, Kaine, Eggleston, Clader. *Third Row:* Bauer, Roberts, Dusch, Duncan, Schehl, Briggs, Hammond. *Fourth Row:* Douglass, Bates, Zook, Rork, Leonard, Ratcliffe, Smith.



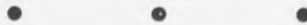


Top Row: Feldt, Corsette, Donley, Havill. *Second Row:* Giles, Peterson, Crapo, Bassage. *Third Row:* Gates, Arlin, Walton, Stockin.

PALAEOLINGUISTS

OFFICERS

<i>President</i>	GORDON STOCKIN
<i>Vice President</i>	NORVA BASSAGE
<i>Secretary</i>	ZILPHA GATES



OFFICERS

<i>President</i>	WESLEY THOMAS
<i>Vice President</i>	RAMON BARNES
<i>Secretary</i>	RUTH DONOHUE

DER RHEINVEREIN



Top Row: Queen, Dayton, Meneeley, Barnes, Richardson. *Second Row:* Bohnacker, Hopkins, Donohue, Churchill, Eddy. *Third Row:* Wright, Thomas, Updyke, Fancher.



ATHLETIC ASSOCIATION
BIG "H" CLUB
BASKETBALL
VOLLEYBALL
BASEBALL
TRACK
TENNIS

ATHLETICS





Top Row: Paine, Leonard, Dunckel, Watson. Second Row: Moxey, Schogoleff, Thompson.

ATHLETIC ASSOCIATION OFFICERS

President	WALTER SCHOGOLEFF
Vice President	DEAN THOMPSON
Secretary	MARY PAINE
Purple Captains	MARY PAINE
Gold Captains	WALTER SCHOGOLEFF
Varsity Captains	MARGARET WATSON
Coaches	VERDON DUNCKEL
	MARGARET WATSON
	WALTER SCHOGOLEFF
	MISS MOXEY
	MR. LEONARD

• • •

Requirements for Membership:

WOMEN	Letter in two major sports
MEN	Letter in three major sports

BIG "H" CLUB

Wright, Ratcliffe, Shaffer,
Schogoleff, Stone, Watson.





Top Row: Corteville, Donohue, Shaffer, Paine. *Second Row:* Scott, Watson, Donley.

JUNIOR WOMEN

For the second consecutive year, the Juniors came through the class series with no defeats.

SCHEDULE

Juniors 14	Seminary 2	Juniors 10	Sophomores 6
Juniors 18	Freshmen 7	Juniors 18	Seniors 12

The Freshmen also were undefeated in the class series, displaying a professional style of basketball to win.

SCHEDULE

Freshmen 49	Seniors 38	Freshmen 46	Seminary 32
Freshmen 21	Juniors 14	Freshmen 33	Sophomores 31

FRESHMAN MEN

Top Row: Eggleston, Paige, Donelson, Torrey. *Second Row:* Simon, Blauvelt, Mix, Taylor.





Top Row: Schaner, Stone, Schogoleff, Shaffer, Ratcliffe. Second Row: W. Paine, M. Paine, G. Paine.

PURPLE WOMEN

The Purple women took four out of five closely-fought games to win the Purple-Gold series.

SCHEDULE

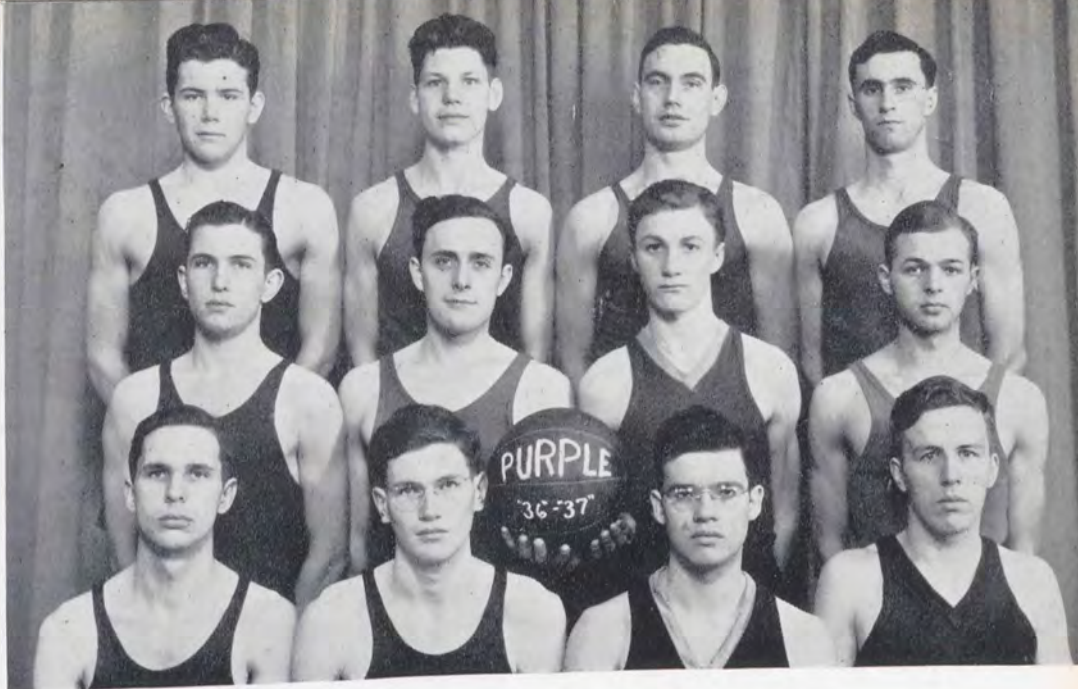
	<i>Purple</i>	<i>Gold</i>
First Game	15	13
Second Game	9	7
Third Game	9	4
Fourth Game	8	10
Fifth Game	9	8
	<hr/>	<hr/>
Total Points	50	42

GOLD WOMEN

Top Row: Kingsbury, Higgins, Dunkel, Donohue. Second Row: Donley, Watson, Hess.



Top Row: Crandall, Simon, Halsted, Gilbert. Second Row: Wright, Stevenson, Blauvelt, Churchill. Third Row: Luckey, Thompson, Schogoleff, Taylor.



PURPLE MEN

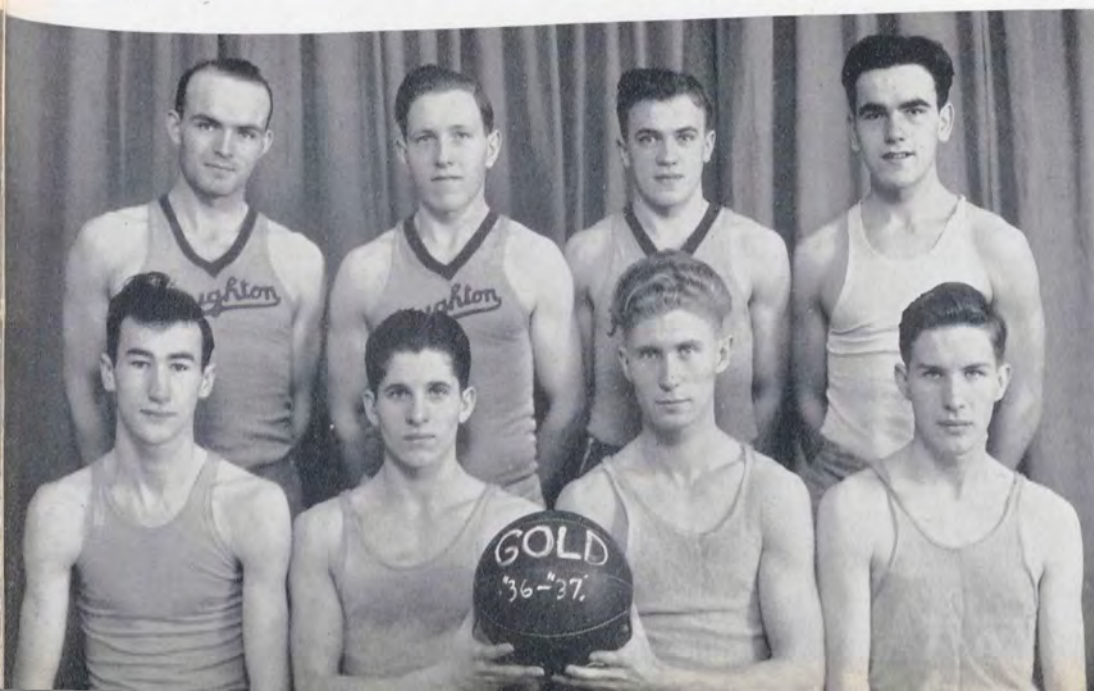
In one of the most closely matched Purple-Gold series ever played in the Bedford Gym, the Purple owe their victory to slightly better teamwork.

SCHEDULE

	Purple	Gold
First Game	35	34
Second Game	31	45
Third Game	36	38
Fourth Game	45	39
Fifth Game	35	34
Sixth Game	42	40
Total Points	224	230

GOLD MEN

Top Row: Mix, Hopkins, McCarty, Paine. Second Row: Tutthill, Dunkel, Wright, Murphy.





Top Row: Leonard, Markey, Donley, Hess. *Second Row:* Kingsbury, Donohue, Stone, Shaffer. *Third Row:* Ratcliffe, Scott, Watson, Higgins.

Varsity Women

The women's varsity is picked from outstanding players in the Purple-Gold series. This year they met with more success than the men's varsity, defeating both the Frosh and the Alumnae.

Varsity 14	Frosh 13
Varsity 13	Alumnae 9



The varsity men, representing the cream of the Purple-Gold crop, though not lacking in material, seemed unable to hit their stride against the Frosh. However, they came back to decisively defeat the Alumni.

Varsity 21	Frosh 40
Varsity 40	Alumni 27

Varsity Men



Top Row: Crandall, Luckey, Leonard, Gilbert, Murphy. *Second Row:* Stevenson, Churchill, Hopkins, G. Wright, Duncel. *Third Row:* Tuthill, Thompson, Schogoleff, D. Wright.

Top Row: Leonard,
Sheffer, Scinecke.
Second Row: Stone,
Ratliffe, Blauvelt.



SENIOR WOMEN

The Senior women walked away with the volley ball series last year, being undefeated throughout the season.

FINAL STANDINGS

	Won	Lost	Percentage
Class of '37	8	0	1.000
Class of '39	5	3	.625
Seminary	4	4	.500
Class of '38	2	6	.250
Class of '36	1	7	.125

The Seminary men edged away from the Class of '39 to win the coveted gold volley balls.

FINAL STANDINGS

	Won	Lost	Percentage
Seminary	7	1	.875
Class of '39	6	2	.750
Class of '36	4	4	.500
Class of '37	3	5	.375
Class of '38	0	8	.000

SEMINARY MEN



Top Row: Woolsey,
McCarty, Crouch.
Second Row: Paine,
Eyler, J. Fancher.



Back Row: Crandall, Queen, Wright, Higgins, Smith, Ratcliffe. Front Row: Nickerson, Schogoleff, Stone, Shaffer.

TENNIS

The tennis tournament last Spring featured close competition. Robert Luckey was by far the outstanding player on the Houghton courts.

FINAL STANDINGS

Men's Singles	Robert Luckey
Women's Singles	Doris Lee
Men's Doubles	Luckey and Crandall
Women's Doubles	Green and Benson

The varsity represents the best players from the Gold and Purple teams. The Gold won the series last year by winning the first four games. This fall, the Frosh decisively defeated the Varsity.

SCHEDULE

Gold 7	Purple 1	Gold 10	Purple 1
Gold 2	Purple 1	Gold 7	Purple 3
Varsity 6		Frosh 15	

VARSITY BASEBALL

Top Row: Churchill, Foster, Crandall, Benjamin. Second Row: Wright, Schogoleff, Fero. Third Row: Hopkins, Briggs.



Top Row: Hurd, Wright, Leonard, E. Elliott, Smith. Second Row: Dunkel, Ratcliffe, Stevenson, Thompson, Foster, W. Elliott. Third Row: Andrus, Eyler, Gant.



MEN'S TRACK

<i>High Point Men</i>	<i>Points</i>
Everett Elliott—Gold	14
Dean Thompson—Purple	11
Olsen Clark—Purple	10
James Bedford—Purple	10
Harland Gant—Gold	10



<i>High Point Women</i>	<i>Points</i>
Ona Record—Gold	13
Geraldine Paine—Purple	11 $\frac{1}{4}$
Margaret Watson—Gold	9
Wilfrieda Paine—Purple	7
Vernita Green—Gold	6

WOMEN'S TRACK

Top Row: Watson, Shaffer, Stone, Smith. Second Row: M. Paine, G. Paine, W. Paine.



1936 TRACK MEET

MEN

<i>Event</i>	<i>School Record</i>	<i>Time</i>	<i>Winner</i>
Mile Run	5:11.9	*4:59.2	Olsen Clark— <i>Purple</i>
880 Yards	2:12.2	2:22.4	Olsen Clark— <i>Purple</i>
440 Yards	52.8	57.2	Dunckel— <i>Gold</i>
220 Yards	23.8	23.8	E. Elliott— <i>Gold</i>
100 Yards	10.1	10.8	E. Elliott— <i>Gold</i>
220 Hurdles	29.3	*29	J. Bedford— <i>Purple</i>
120 High Hurdles	19.2	19 (Not Official)	J. Bedford— <i>Purple</i>
Pole Vault	11'4"	9'9"	{ Andrus— <i>Gold</i> Eyler— <i>Purple</i>
High Jump	5'8.4"	5'4"	Andrus— <i>Gold</i>
Broad Jump	22'3.5"	20'	Thompson— <i>Purple</i>
Discus	105'1.5"	87'7"	Gant— <i>Gold</i>
Shot Put	40'6"	36'5"	Gant— <i>Gold</i>
Relay	2:12	2:20	— <i>Gold</i> Dunckel, Goldberg Elliott, McCarty

SCORE: GOLD 61½ PURPLE 51

*Indicates New Record

1936 TRACK MEET

WOMEN

<i>Event</i>	<i>School Record</i>	<i>Time</i>	<i>Winner</i>
220 Yards	31.5	34.8	G. Paine— <i>Purple</i>
100 Yards	13.2	13.2	O. Record— <i>Gold</i>
75 Yards	9.9	10.2	O. Record— <i>Gold</i>
High Jump	4'4.5"	3'10"	W. Paine— <i>Purple</i>
Broad Jump	13'8.5"	13'1/2"	M. Watson— <i>Gold</i>
Relay	1:13.8	1:15.1	— <i>Purple</i> W. Paine, G. Paine M. Shaffer, B. Stone

SCORE: GOLD 38 PURPLE 28



BOOK FIVE



GUESS WHO . . .

IMPROMPTUS







IDENTIFICATION

BABY PICTURES

PAGE 78

- 1—William Earle Foster
- 2—Prudence Amelia Sheffer
- 3—Gerald Bennet Smith
- 4—Beulah Reney
- 5—Dorothy Beulah Seigenthaler
- 6—Ellen Maplyt Stickle
- 7—Jane Elizabeth Zook
- 8—Winton Harold Halsted
- 9—James Edwards Bence
- 10—Marguerite Jeanette Warner
- 11—Allen Horton Smith
- 12—Laurence Harris Saile
- 13—Florence Wright

PAGE 79

- 14—Hazel Irene Fox
- 15—Isabelle Florence Riggs
- 16—Barbara Cole Heminway
- 17—Mary Elizabeth Paine
- 18—Bruce Fred Fairfield

- 19—Lee and Lynn Einfeldt
- 20—Elizabeth Louise Ratcliffe
- 21—Wesley Ames Churchill
- 22—Regina Ruth McMahon
- 23—Ellen Laura Mills
- 24—Esther Isabelle Fancher
- 25—Cecil Davison Elliott
- 26—Orabelle Arlene Dusch
- 27—Ransom Richardson
- 28—Martin Clemence Eddy
- 29—Magdalene Katharine Schehl
- 30—George Wilfred Duncan
- 31—Kathryn Lucia Jones
- 32—Worth LaRue Cott
- 33—Elizabeth Helen Sellman
- 34—Walter Schogoleff
- 35—Gwendolyn Janet Blauvelt
- 36—John Wesley Thomas
- 37—Florence Elizabeth Stone
- 38—Frank Gordon Stockin, Jr.
- 39—Merritt Barnum Queen

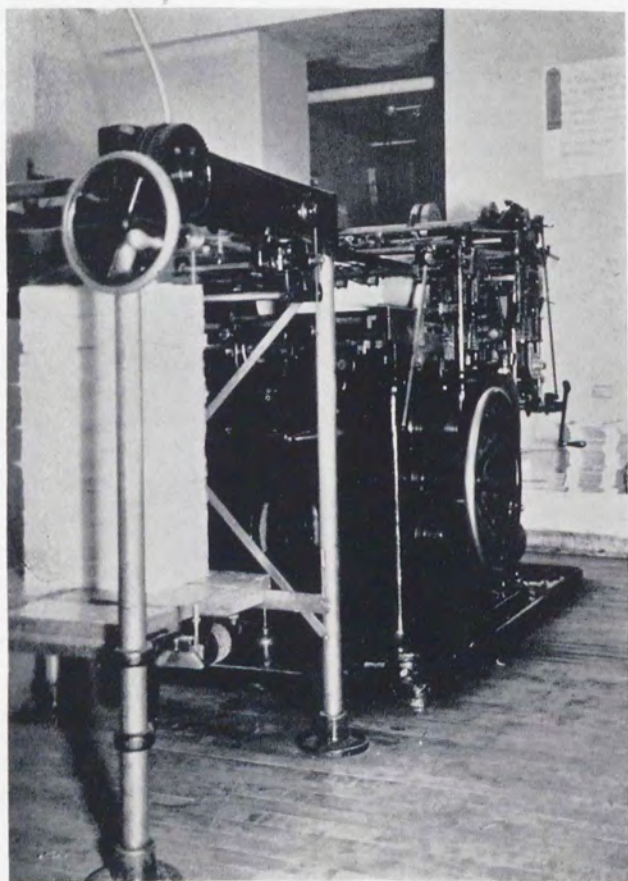












Advertisements

HOUGHTON COLLEGE

JAMES S. LUCKEY, A.M., Pd.M., LL.D.

President

A Christian College of Arts and Sciences,
Fully Accredited, Offering Courses Leading
to the Bachelor of Arts and Bachelor of
Science Degrees and Giving Professional
Training in Education, Music, and Theology.

FALL TERM BEGINS
Monday, September 20, 1937

SUMMER SESSION
July 5, 1937—August 14, 1937

For Catalog and Other Information Address

JAMES S. LUCKEY

HOUGHTON

NEW YORK

HOUGHTON BIBLE SCHOOL

HOUGHTON, NEW YORK



*Gives a Two-Year Course of Study
for Pastor, Missionary, or
Gospel Singer.*



Preparatory Religious Training

HOUGHTON SEMINARY

HOUGHTON, NEW YORK

A Christian Preparatory School of
Merit Offering a Complete
Four-year High School
Training



PHILINDA S. BOWEN, *Principal*

DAMON'S SERVICE STATION

Evinrude Outboard Motors—Gasoline, Oils
Ice Cream, Candy

CHARLES L. DAMON, *Prop.* ... Rushford, N. Y.

We Welcome Large and Small Depositors

STATE BANK OF RUSHFORD

Member of F. D. I. C.

LYMAN WEAVER

*Staple and Fancy Groceries, Meats and Vegetables
Dry Goods and Notions*

PHONE 28

RUSHFORD, N. Y.

R. A. TAYLOR

G. L. F. Feed and Farm Supplies

RUSHFORD, N. Y.

HOUGHTON COLLEGE BOOK STORE

Where You Get Books and School Supplies,
Candy and Peanuts, College Novelties,
Stickers, Pennants and Pillows

ELTON L. KAHLER, *Manager*

HOUGHTON COLLEGE PRESS

Houghton, New York

WILLARD G. SMITH, *Mgr.*

Specializing in Job Printing

High School Annuals

Catalogs, Pamphlets and Folders

Compliments of
BUTTER-KRUST BAKING CO.
 Bradford, Pa.

Makers of
 BREAD ROLLS
 PASTRIES
 Fresh Daily — At Your Grocer

S
C
R
A
N
T
O
M
S

Books — School Supplies — Stationery

Scrantom's furnish you most
 of the needed items through
 your College Book Store and
 the Houghton general store.
 They will be glad to order
 for you any not regularly
 stocked.

Engraving—Novelties—Sporting Goods

R
O
C
H
E
S
T
E
R

**STATE BANK OF
 FILLMORE**

FILLMORE, NEW YORK

Our Motto: Security-Service-Courtesy

MEMBER OF F. D. I. C.

**WESLEYAN METHODIST
 PUBLISHING ASSOCIATION**

F. R. EDDY, *Manager*

Publishers of

Wesleyan Methodist, Sunday School Banner and
 Other Sunday School Supplies—Job Printing
 Bibles and Other Religious Books

330 East Onondaga St.

Syracuse, N. Y.

With Best Wishes from

Your Furniture Dealer
 and
 Funeral Director

A. R. WILES

Phone 63-A

Fillmore, N. Y.

Compliments of
JACOB DOLD PACKING CO.
 Buffalo, N. Y.

HOUGHTON COLLEGE
LITTLE SYMPHONY ORCHESTRA

*Presenting Some of the Best
Orchestral Literature*

ALTON M. CRONK, *Conductor*

HOUGHTON COLLEGE CHOIR

WILFRED C. BAIN, *Conductor*

Presents Program of Church Music Sung
A Cappella. One of the Most Capably Con-
ducted College A Cappella Choirs
in the East

ELDRIDGE ELECTRICAL SHOP
Radio—Sales and Service
Your Electrical Store
FILLMORE, N. Y.

CHAMBERLAIN BROTHERS
Feed and Coal Dealers
Caneadea, New York

Compliments of
DR. C. F. BALLARD
RUSHFORD, N. Y.

Foremost in Style Popular Prices
THE STYLE SHOPPE
PERRY, N. Y.

Compliments of
BROWN & BROWN
CUBA, NEW YORK
Representing Northwestern Mutual Life Insurance Co.

For Quick Dependable Service
Stop at the
ELDRED SERVICE STATION
FILLMORE, N. Y.

Compliments of
MARKET BASKET
FILLMORE, N. Y.
G. Bloomister, Mgr. G. Burgess, Asst. Mgr.

Compliments of
RANSOM L. RICHARDSON
FILLMORE, N. Y.

CUBA ICE CREAM COMPANY
Manufacturers
Cuba Ice Cream
"The Cream of Quality"
Cuba, N. Y.

C. A. WHEELER & SON
Dry Goods, Shoes and Gents' Furnishings
Cuba, New York

HOUGHTON'S
GENERAL STORE

Grocery Department Affiliated with
TRIANGLE STORES
An Association of Independent Grocers



M. C. CRONK

FINISHING COURSES

For
HIGH SCHOOL and COLLEGE
GRADUATES

INTENSIVE TRAINING

For secretarial, accounting, and
other business positions.

NO SOLICITORS

or professional salesmen.

Tuition \$16 to \$19 a month.

WESTBROOK ACADEMY, OLEAN, N. Y.
(Established 1882)

In the spring a young girl's fancy lightly
turns to Boulder thoughts.

— *Gaoyadeo*

WARSAW CLEANERS

Clothes Made Bright, Sparkling, Odorless

WARSAW, NEW YORK

COMPLIMENTS OF
DAVIE'S
WELLSVILLE, N. Y.

Compliments of
THE CROSBY DAIRY
Hinsdale, N. Y.

Hours 9-12—1-5 Phone 98-M
DR. F. DASSANCE
Optometrist
WELLSVILLE, N.Y. 20% Discount to students

THE METAL ARTS CO., INC.
JEWELRY AND STATIONERY CRAFTSMEN
742 Portland Avenue, Rochester, New York
School Jewelers
Charles C. Spies Phone, Delaware 0443
267 Kinsey Ave., Kenmore, New York

ROCKWELL BROS. & CO.
WELLSVILLE, N. Y.
Established 1882

The largest store in Allegany then—and for
all these 54 years it has held that position.

Dry Goods, Ladies' Apparelling,
Rugs, Furniture

If it's new in jewelry, you will find it at
COVILL'S JEWELRY STORE
"HOME OF THE SQUARE DEAL"

Mail orders promptly filled
Mail your watch and jewelry repairing to us
All work promptly returned

110 North Main St. Wellsville, N. Y.
PHONE 272

PASCO FEEDS

Mean

QUALITY FEEDS



PHELPS & SIBLEY CO.

CUBA, N. Y.

STEKL BROS. HARDWARE

Phone 82-B

Fillmore, N. Y.

*Hardware of All Kinds, Heating,
Plumbing, and Sheet Metal Work*

Call Us When You Need a Plumber

Work Guaranteed

JOHN KOPLER

Funeral Director

Phone 79

Fillmore

Compliments of
TONY MIDEY

Shoe Repairing
FILLMORE, N. Y.

Compliments of

DR. J. A. LOCKWOOD, *Dental Surgeon*
ALICE M. LOCKWOOD, *Dental Hygienist*

FILLMORE, N. Y.

MILFORD J. MERVILLE

GENERAL INSURANCE

Telephone 72

FILLMORE, N. Y.

Compliments of

G. W. NAIRN, M. D.

WARSAW, N. Y.

FILLMORE, N. Y.

Compliments of

DR. A. H. and R. H. LYMAN

FILLMORE

NEW YORK

LESTER J. WARD

Pharmacist

Candy and Stationery a Specialty

THE REXALL STORE

FILLMORE, N. Y.

A. S. HOWDEN & SON

—JEWELERS—

Watch Repairing and Engraving

Watches Clocks Silverware

FILLMORE, N. Y.

WESTMINSTER CHOIR SCHOOL

John Finley Williamson, President



Training Choral Conductors
for the

Church, Civic Chorus, School and College



PRINCETON, NEW JERSEY

Graduation Caps, Gowns and Hoods

Gowns for School Choirs and Glee Clubs

Band Uniforms

THE C. E. WARD COMPANY

NEW LONDON, OHIO

James E. Shortell

John J. Shortell

SHORTELL BROS.

Contractors

PLUMBING

HEATING

616 West State St.

Olean, N. Y.

Phone 3456

LUCKEY & SANDFORD

Sales FORD Service

Hume, N. Y.

Compliments of
DONALD A. MacDUFFIE, M.D.
Practice Limited to Diseases
of the Eyes
Office: 407 East State Street . . . Phone 5122

Compliments of
HANNIFAN & MARONEY CO.
OLEAN'S BEST SHOE STORE

A. E. EWING CO.
Hardware and Home Furnishings
OLEAN, N. Y.

Compliments of
THE WESTON LUMBER CO.
Olean, N. Y.

JULIUS A. BECKER, M. CP.
Chiroprapist

104 SOUTH SECOND ST.

OLEAN, N. Y.

OPPENHEIM

The Florist

Flowers of Quality

OLEAN, N. Y.

Compliments of
LAYTON'S GREENHOUSES

2901 W. State Street

PHONE 3187

OLEAN, N. Y.

When in Olean, Stop at the
OLEAN HOUSE

Comfortable Rooms — Moderate Rates
Excellent Food

Compliments of
McEVOY CANDY CO.
Wholesale Confectioners
OLEAN, N. Y.



THE COLLEGE USES
FAMOUS READING ANTHRACITE
WHY NOT YOU?

Ask Your Nearest Coal Merchant or Write . . .

THE PHILADELPHIA AND READING
COAL AND IRON COMPANY

LINCOLN-ALLIANCE BANK BUILDING

183 MAIN STREET EAST

ROCHESTER, N. Y.

Compliments of
THE COLLEGE INN

Compliments of
STEBBINS FARM
Guernsey Cattle Houghton, New York

Compliments of
W. A. CASE & SON MFG. CO.

31 MAIN STREET

BUFFALO, N. Y.

Compliments of
HAMILTON SHOE STORE
"X-Ray Shoe Fitters"
WELLSVILLE, NEW YORK

GEORGE'S GARAGE
Gasoline and Oils, Ignition — Accessories
HOUGHTON, NEW YORK

FRED DANIELS
GLADIOLI
Star of Bethlehem, Picardy, Minuet, Many Others
BOTH BULBS AND FLOWERS

Heart's Delight
FOOD PRODUCTS
"JUST HIT THE SPOT"

SCOVILLE
BROWN
CO.

MOSER STUDIO

Photographers to
“The Boulder”

27 Clinton Ave.

Rochester, N. Y.

**Quality
Wise**



Serve...
EDELWEISS

JOHN SEXTON & CO.
MANUFACTURING WHOLESALE GROCERS
CHICAGO BROOKLYN

Eyesight
Is Very Precious



Use Plenty of Lighting

ROCHESTER GAS &
ELECTRIC CORPORATION

SHAPIRO'S

Wholesale

FRUITS AND PRODUCE

Warsaw, N. Y.

ALLEGANY LUMBER CO.

Complete Line of Building Material

FILLMORE, NEW YORK

Compliments of Your

FILLMORE

LARKIN FOOD STORE

CANNON CLOTHING CO.

The Man's Shop of Allegany Co.

Wellsville, N. Y.

Compliments of

GLEN IRIS INN

In the beautiful

LETCHWORTH PARK.

HARRY BEARDSLEY,
Manager.

PORTAGEVILLE, N. Y.

It always pays to shop

at

ROYCE & WRIGHT'S

PERRY, N. Y.



Wyoming County's greatest
Department store.

IN APPRECIATION . . .

A distinctive privilege and extreme pleasure have been ours in having had the production of this book. We gave more than craftsmanship of printing, and the fulfillment of a contract. A deeper regard guided us . . . We became as a fellow part of the school and the student body, entering into the spirit of the book's purpose and its contents and so lending our inspired loyalty to its every detail of issuance. And in that degree of appreciation to the staff, the graduate and undergraduate, and to your school, we wish continued success.

THE FOWLE PRINTING COMPANY

524 N. Milwaukee St. - Milwaukee, Wis.



