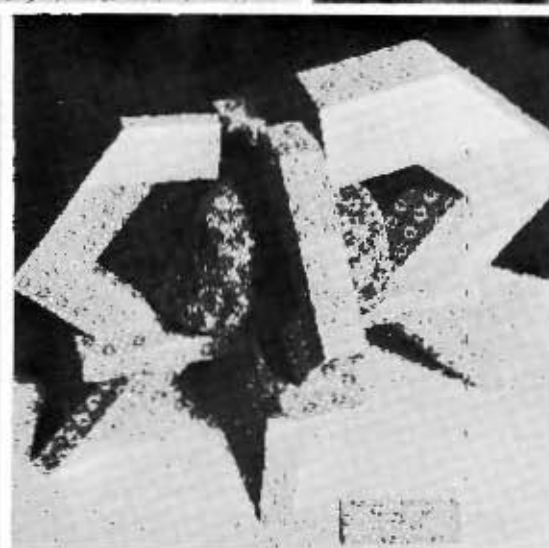
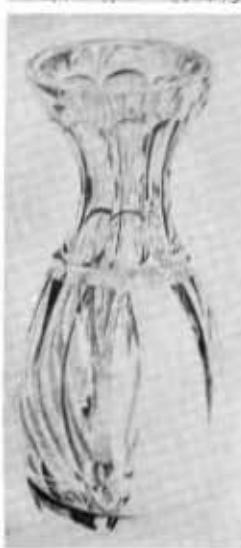
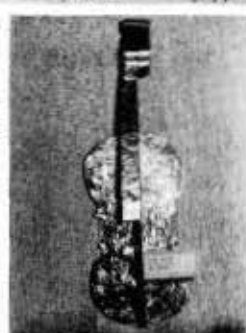
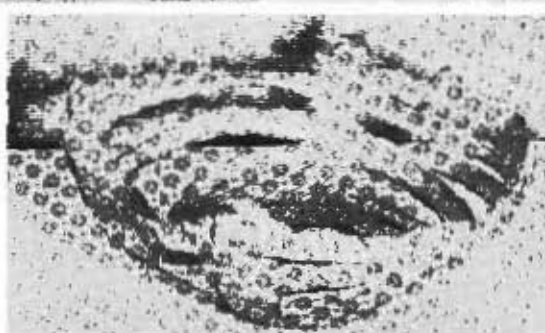
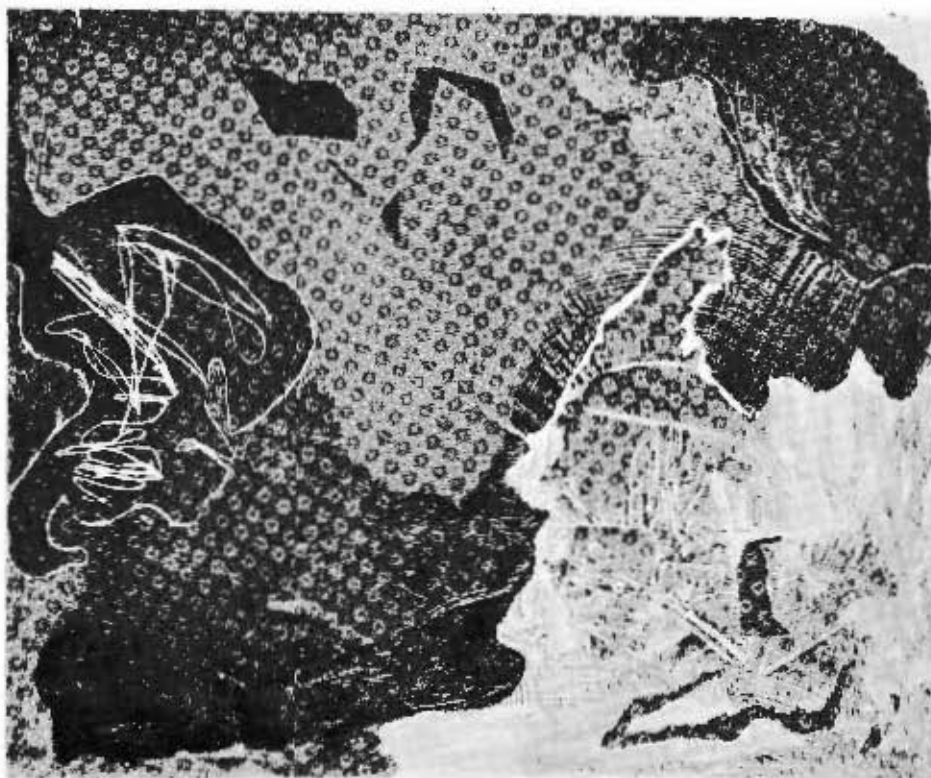


Houghton MILIEU

COLLEGE BULLETIN • MAY 1980



INSIDE: One Year Out • Until I'm 32 • Double Your Giving? • Alumni in Action • Sports • Campus News

One Year Out — Some Alumni Reflect on their College Days

MYLINE

Good grief! It's time to plan the May issue again-to decide if MILIEU should cover commemorative as just another event, as the occasion for all kinds of special research and pontification, or as something in between—an event to be honored obliquely.

That's a rough summary of the editor's initial planning thought processes last February. Thesis, antithesis, synthesis. We've used the first two approaches. Let's try the something in between. Five years ago MILIEU profiled graduates who were having a tough time finding jobs. Their comments tended to suggest that liberal arts education has validity beyond employment, however disconcerting joblessness may be. This year MILIEU wrote to a dozen 1979 graduates, not to discover how marketable they've found their education, but to learn what meaning it's had for them, what lasting values they perceive.

Comments of the seven respondents comprise the first feature; a look at an atypical student and his impact epitomizes the second. Figuring that readers may be moved to overt action by the first two articles, the third describes how corporate matching gifts have helped Houghton, and how readers can trigger more of them.

—Dean Liddick

Cover: A sample of objects displayed at a spring exhibit as the art works created by Houghton students during the 1979-80 year. Warmly received with excellent attendance, the show offered a variety of media including painting, drawing, sculpture, ceramics and printmaking. Fine Arts Division Chairman Donald Bailey observed, "This exhibit builds upon the fine art heritage begun by 11. Willard Orrip and his family . . . exciting because the works displayed excellence in inspiration and control of techniques. The show is indicative of the exciting things to come as the new art major is implemented this fall under the direction of art faculty James Mellick, Gary Baxter and Bruce Wenger.

Houghton College
Published bi-monthly by Houghton College
Houghton, NY 14744, Second Class Postage
Paid at Houghton, NY 14744.

Editor, Dean Liddick
Editorial Assistants, Diane Springstead
William Greenway

Houghton College admits students of any race, color and national or ethnic origin. The college does not discriminate on these bases, or on the basis of sex in any college administered program.

Styles of responses to MILIEU's questionnaire were as varied as the 1979 graduates who replied. Several were concise ignoring some questions, others spilled over onto several pages. Questions asked were these: What brought you to Houghton initially? How well did your academic work prepare you for graduate study or career? Are you pursuing the direction you anticipated or were prepared for? What were the main influences you felt here? What might you do differently if going to college again?



JANYCE DALE

Janyce Dale had acted as a resident director at the Buffalo Suburban Campus this past year. This job has been part of her graduate studies in student personnel work at SUNY Buffalo. Janyce came to Houghton through the influence of a Wesleyan Church where she attended and a friend's recommendation. Again, friendships with students and faculty are the chief influences she perceives, although her coursework was sufficiently challenging that in graduate school "I have done fairly well and have not felt as much pressure as when I was at Houghton. Houghton taught me to challenge myself academically." She feels that her extra-curricular activities were as valuable as her studies and regrets only that she didn't apply to be a resident assistant earlier. Recalling cherished spiritual experiences here she concludes, "I miss chapels. They were one of the highlights of my day."

GRAHAM WALKER



"When I was a freshman at Houghton I dreamt of being at the U.S. State Department, so at the end of my sophomore year I transferred to Georgetown University in Washington. After one semester I transferred back to Houghton. It had become clear to me that I had far more to gain in the long run from what Houghton had to give."

Despite aversion to Washington, Graham found himself on Capitol Hill the week after graduation. "Within three



TERRY SLYE

Valdettorian, Senate President, Terry led a busy student life, but says if he had college ahead of him still he'd "try to be more involved in community outreach organizations, attempt to increase contact between students and community members not directly tied to the college." A mid-westermer, he came to Houghton as the result of a meeting with then faculty members Bob and Norva Crosby while he was in Colombia, South America. Terry says his history, economics and speech background is serving him well at Harvard Law School.

days I had secured a position as legislative correspondent for Congressman David Stockman." In addition to letter answering and research he notes, "the staff here doesn't understand what Christianity means, but they sense that I am a Christian and as a result I have to meet with all the religiously oriented lobbyists and with pro and anti-abortion people."

Looking ahead to September he adds, "The Rotary Foundation awarded me a scholarship to study for a year in Switzerland at the University of Geneva International Studies Institute." Graham concludes, "without the stability and personal nurture afforded by Houghton, I would never have been able to contend with this city in a way pleasing to God."



JOSEPH HUPP

"Through conversations with Dr. Lindley, my father concluded that Houghton was very strong academically. Dad in turn talked me into going to Houghton, so my original reasons for coming had to do with academics and cost . . . but the most important thing that happened to me at Houghton was to become a Christian . . . events and people influenced me to make this decision in my sophomore year."

A chemistry major, Joe spent summer '79 as one of two Houghton grads among a group of 100 students selected nationally to do research at Argonne National Laboratories. Now specializing in electro-chemistry at Michigan State, he cites Dr. Bernard Piersma's influence here. If reliving his college days, Joe says he'd get to know more people. He credits a course with Dr. Morken for making him "start thinking about the full meaning of discipleship . . . trying to discover what influence Christian faith should have on my life-style, my involvement with social issues and my career."



WAYNE HAREWOOD

Last summer Wayne was one of six Houghton students to bike across America and he plans to write a book about the experience.

"Graduate school seems like a breeze compared to Houghton's tough standards", says he, now nearly finished with a master's thesis on "The Effects of Religious Agencies on the Refugee Crisis." He hopes to work for the UN High Commission for Refugees of a Christian agency in that field. Though he comes from Barbados, Wayne learned about Houghton from alumnus Jim Spurrier at a HiBA retreat in 1976. "I was impressed by him and by what he said about Houghton."

Once here Wayne found friends were his main influence—students, faculty and staff. If he had college to do again he would "Be more active in sports and student government." He regrets the lack of black faculty here, noting, "as a Christian college setting Christian examples, Houghton has a long way to go in this area . . . recruitment of black faculty and staff should be a major priority for this decade."



DEBBIE HEACOCK

"I didn't know whether I wanted to go into the sciences, or music, or even pre-med, so I wanted a school that was strong in those areas. Also I'd had a rather protected homelife and didn't feel I could handle the transition to a large school where there were few restrictions."

"A great experience," Debbie calls last summer spent working on coal

chemistry at Argonne National Laboratories. But despite rave reviews from her supervising scientist there, she's having a struggle in her University of Rochester graduate program. In retrospect she would have taken some different courses or maybe transferred for her senior year to a university with graduate chemistry courses—she completed Houghton's offerings her junior year. Still, Debbie says she "needed the social/spiritual atmosphere to grow . . . I had many close friends and always knew people were praying for me and there is an incredible amount of power in that—especially at those times when you don't believe in yourself and God doesn't seem near."



JOAN KELLER

Joan has spent her first year out as teacher-secretary at Navajo Bible School and Mission, Window Rock, AZ. This summer she will serve eight weeks with Central Alaska Mission as a member of a village team conducting DVBS and adult Bible studies in Eskimo villages. Returning home to Telford, PA., she hopes to teach—if long-distance interviews are successful.

A psychology major, Joan's student teaching stint riddled her of desire to be a school administrator. Numbering her Houghton years among her best, she cited "the FMF emphasis which kept missions on my mind." She cherishes friendships made by shared faith, and says chapel speakers who urged students to get their spiritual priorities straight in college were right. Her many activities here were enriching, but if she had college to do again, Joan says "I'd try harder and take more time for people."

Photos below, left to right: Refugee camp children, in danger of becoming "a lost generation," Gary fears. Early days in Sa Keo hospital; Gary tends a Hmong refugee woman suffering malnutrition, wounded and cut feet. Gary at Houghton. Hospital patients at Sa Keo.

Photos courtesy World Relief Commission



"Until I'm Thirty-Two..."

one man's commitment to the relief of human suffering in the name of Jesus Christ

MY BURDEN, DESIRE, lifecalling, is to form disaster teams — professionally trained specialists, fired by the love of Christ.

Speaking is veteran disaster relief worker, builder of the Sa Keo Camp in Thailand, office manager of the UNHCR's relief team there last fall—intense, 21-year-old Gary Johnston, a Houghton College junior. Son of missionary parents to Thailand—his mother is alumna Beulah Smalley Johnston, '48—Gary became a Christian at 17.

During Christmas vacation of his senior year at the Dalat high school, he got his first taste of refugee work. After graduating in 1977 he worked in self-help projects along the Cambodian border with the Christian & Missionary Alliance. The summer after his freshman year at Houghton he paid his own way back to Asia to help refugees along the Mekong River.

Following his sophomore year, Gary returned to Thailand as an intern with NAE's World Relief Commission. From May till October he worked in camps created in 1975 to handle Cambodian

refugees. When Vietnam's offensive into Cambodia began last October, 60,000 to 100,000 new refugees crossed the border. Veteran disaster workers were appalled at the unprecedented conditions of the people—diseased, starving and hopeless. Hundreds died daily despite efforts to reach them in the jungle with food and medicine.

Lent to the United Nations High Commissioner for Refugees because of his knowledge of the language and people, Gary and two others were shown a field and asked to build a camp for 30,000 on 72 hours' notice. This was Sa Keo, publicized by Rosalyn Carter's visit. Later, Gary oversaw construction of a hospital there and became the UN's office manager, responsible for financial operations along the border, arranging construction contracts and securing supplies. His picture appeared in *TIME* Magazine's November cover story on refugees. In a few months he learned what dedicated amateurs could accomplish, and of the ill prepared, ad hoc, short-term nature of secular, organized international disaster relief.

Back at Houghton last January, Gary began to share his experiences and vision. "My personal interest is in initial disaster relief because I think that's what determines the eventual outcome," he told audiences at Houghton, in Buffalo, Toronto, Wheaton and Los Angeles. "These refugees have lost personal identity, national identity, pride and family—peculiar needs for which Christ offers solutions....What an opportunity for the church to meet a need the world hasn't been able to solve." Gary says that it is essential to combine Christian caring—as opposed to professional disinterest—with professional competence, and plans to complete his formal education in pursuit of that goal.

"I've improvised as much as the coursework here will allow," he says as he leaves Houghton to complete a degree in international relations at a Washington, DC university. He sees no end to the need for skilled teams able to move into disaster situations, evaluate and program for psychological and spiritual needs as well as physical ones. "You've done nothing for a man when you just feed his body," he explains. Gary's ideal team would include anthropologists, sanitation experts and community planners in addition to traditional specialists. Now, he contends, no one pulls together data from previous experience to apply to fresh disasters. Too,



he wants to recruit and use local, native speaking Christians in camp efforts so that "on the day when the great white hope gets on his airplane and leaves, there is a Christian guy down the block ... like a C&MA minister I know who's been through everything with these people for 20 years and still exhibits joy and caring."

Gary will build housing for widows and orphans in Beirut, Lebanon, this summer, part of his plan to mesh practical experience with academic preparation. "I may burn out," he admits when asked about the risks his pace generates, "but until I'm 32 I'm committed not to have any established place."

COLLEGIANS OFTEN RECOGNIZE a professor's influence, but as a result of having Gary Johnston in his Community class, Winston Johnson, a part time Houghton instructor, is finding his life direction changed. International politics has derailed the Guyana project that peaked Johnson's interest when Gary described it to the class, but this July Johnson will become Assistant Vice President for Refugee Services of NAE's World Relief Commission in New York.

"Till I met Gary I didn't even know it existed," Johnson said of WRC. A

1975 Houghton alumnus, he majored in sociology, encouraged by Dr. J. Whitney Shea. Seeking to integrate his faith and discipline he completed a master's program—Theological Studies in the Sociology of Religion—at Gordon Conwell Seminary. He began doctoral studies at SUNY Buffalo in 1977 and has concurrently taught classes in Community and Research Methods here.

Johnson's first steps toward relief work began when Gary took his resume to an NAE conference in Los Angeles. Later, while he was doing consulting in New York, Johnson called on WRC's Grady Mangham at his Nyack office. "Mangham had my resume and several jobs open." Discussion continued and Johnson's job outline evolved. Using research methods, he'll gather data on existing relief efforts from refugee camps, sponsors, UN, Immigration and other government agencies. Working with the director of support services, he'll seek to improve worldwide implementation in liaison with government and other private relief agencies.

Notes Johnson, "one reason I wanted to work with WRC is its across-the-board reputation for using resources well." He's eager for a role in breaking down "the narrow idea of ministry... Any discipline can serve the Lord and missions have need for an incredible number of disciplines."

THIRTEEN STUDENTS under partial support of Houghton F.M.F. will engage in summer projects on four continents. Ruth Woolsey and Art Lewis, both with Wesleyan Gospel Corps, will work in Sierra Leone, West Africa—she as a nurse's aide at a new clinic in Medina; he at Kamakwie Wesleyan Hospital. Pastor Amos Nwokenna will lead crusades in his home country, Nigeria, under the auspices of SIM.

With North Africa Mission, John DeValve will prepare radio tapes for TransWorld Radio in Marseille, work with Muslim students in Grenoble universities, and do camp construction work for Algerian missionaries. With Gospel Missionary Union, David Tietje, will be involved in "saturation evangelism" crusades in Belgium. Elaine Beck plans to help Operation Mobilization.

Denise Calhoun, under South American Mission, will work with handicapped children and door-to-door evangelism in Peru. Mark Eckler and Robert Weiland (an independent not sponsored by FMF) will tour South America and the Caribbean with Sports Ambassadors. Don McKay will traverse Mexico, Colombia, Bolivia and Brazil doing mission airstrip maintenance. Joyce McDonald and Martha Tripp will assist in La Gonave Wesleyan Hospital, Haiti, through Wesleyan Gospel Corps.

Edwin Zehner will work at the C&MA Youth Hostel in Bangkok and Lao refugee camps in Thailand. Promoting a spiritual witness through sports with Soccer Friends, Jon Ortlip will play some 20 games against semi-pro and national teams in Israel and Jordan.

At least nine other students will be summer missionaries. As part of YES Corps, Kathy Konz and Laurie Sawyer will participate in hospital and general outreach work in Haiti. Joy Forbes will serve as a vacation Bible school teacher, camp counselor and secretary's helper in Sao Benedito, Brazil with Gospel Missionary Union.

Kevin Austin, Polly Jennejohn, Ann Taylor, Tom Silver, Dexter Davis and Don McKay, will be assigned to a Peace Corps volunteer to use their athletic skills and knowledge of soccer, basketball or baseball with the Honduran National Sports Federation.

Double Your Giving?

Matching Makes it Possible

Since 1954 Houghton has received nearly \$300,000 in matched money, some of it resulting from gifts as small as \$30.

YES, VIRGINIA, there are some good deals left in the world, and corporate matching gift programs may be at the head of the list so far as higher education is concerned. Everyone wins: the donor, his employer, and the recipient college—preferably Houghton.

You don't have to work for an industrial giant, you don't even have to give in three, four or five-figure amounts to participate. Since 1954 Houghton has received nearly \$300,000 in matched money, some of it resulting from gifts as small as \$30. In the last two years alumni, parents and other friends have had more than \$45,000 in gifts matched by employers — one in excess of \$10,000. The money has benefited every aspect of Houghton's operation — new construction, academic programs, scholarship funds, endowed professorships, faculty salaries and current funds.

The college has identified 160 alumni as working for matching gift firms, plus 133 parents of current students. Last year 103 of these people participated, up 40 from the previous year, but still only a third of the known potential. Unfortunately, Houghton records on alumni employers are still incomplete. That's why the college is using this means to apprise you of a significant opportunity you may have not investigated. Corporations most active in Houghton's behalf as the result of employee interest are: Xerox, General Electric, Gannett Newspaper Foundation, IBM, Texaco and Bristol-Meyers.

Following is a list of nearly 800 firms that match gifts to higher education — never



Journalism students visit Olean Times Herald newsroom. Internships are also part of the program.

less than dollar for dollar, frequently two for one, occasionally three for one. All of these companies match gifts to four-year colleges and some do so for other types of institutions. Listings preceded by an asterisk mean matches on a basis greater than one-to-one. SP means that spouse's gifts are matched and A means that the company requires alumni or attendance status.

Essentially those listed are parent companies, but divisions and subsidiaries usually match too. Please look through the list for your firm. Then, to learn details of your employer's policy, ask someone in personnel or community relations. After all, education received \$22.5 million this way last year. You might be the one to increase Houghton's share — maybe even before the close of the fiscal year on June 30.

In case you wondered: listing the matching gift companies does not necessarily constitute Houghton's endorsement of their products or of other company policies. It's just another way of helping you in planning your stewardship — making mammon serve God — you might say.

A

Abbott Laboratories
A. S. Abell Co. Foundation, Inc. (ALL)
Abex Corp. (ALL)
ACF Industries, Inc. (1, 2, 4, PR)
Aerodyne Corp. (1, LIM, A)
Aeroflex-General Corp. (1, 2, 4)
The Aerospace Corp. (ALL, SP)
Aetna Insurance Co. (2, 3)
Aetna Life & Casualty (ALL, SP)
Aid Assn. for Lutherans (ALL)
Air Products & Chemicals, Inc. (ALL)
Aircor, Inc. (ALL)
Akzona, Inc. (ALL)
Alcoa Standard Corp. (ALL)
Alexander & Alexander Inc. (ALL)
Allegheny Ludlum Industries, Inc. (1)
Allendale Mutual Insurance Co. (1, 2, 4, PR)

Allied Chemical Corp. (ALL)
Allis-Chalmers Corp. (ALL)
Allstate Insurance (ALL)
Aluminum Co. of America (2, 3, 4)
AMAX, Inc. (1, 2, 3)
American Bank & Trust Co. of Pa. (1, 4)
American Brands, Inc. (ALL, A, SP)
American Broadcasting Co., Inc. (ALL)
*American Can Co. (ALL)
American Credit Corp. (ALL)
*American Express Co. (ALL, PR)
American Hoechst Corp. (1, 4)
American Home Products Corp. (ALL)
American Hospital Supply Corp. (ALL)
American Motors Corp. (ALL)
American National Bank (1)
American National Bank & Trust Co. of Chicago (ALL)
American Natural Service Company (ALL)
American Optical Corp. (1, 2, 3, SP)
American Standard, Inc. (ALL)

American States Insurance (1, 2, 4, SP)
American Sterilizer Co. (1, 4)
American Stock Exchange Inc. (ALL)
American United Life Ins. Co. (ALL)
AMF Inc. (1)
Amfac, Inc. (ALL)
Amstar Corp. (ALL)
The Ansoconda Co. (1, 3, 4)
The Andersons (2, 3, 4, LIM)
ARA Services (1, 2, 3, SP)
Arkwright-Boston Manufacturers Mutual Insurance Co. (ALL, SP)
*Armco Inc. (1, 2, 3)
Armstrong Cork Co. (1, 4)
Arrow-Hart, Inc. (2, 3, 4)
Arthur Andersen & Co. (ALL, SP)
ASARCO, Inc. (1, 2, 4)
*Ashland Oil, Inc. (ALL)
Associated Box Corp. (ALL, PR, A)
Associated Dry Goods Corp. (ALL)
Atlas Steel & Aluminum, Inc. (1)
*Atlantic Richfield Co. (1, 2, 3, SP)
Atlas Rigging & Supply Corp. (1, PR, A)
Avon Products Inc. (2, 3)

B

The Badger Co., Inc. (1, 4)
The J. E. Baker Co. (ALL)
Ball Corp. (1, 2, 3, SP)
Bancroft-Whitney Co. (1, 2, 3)
Bank of America (ALL)
Bank of California, N. A. (ALL)
The Bank of New York (1, 2, 4, SP)
The Bankers Life Co. (ALL, SP)
Barnes & Roche, Inc. (ALL)
Barnes Group Inc. (ALL)
Barry Wright Corp. (ALL)
The Barton-Gillet Co. (ALL)
Rechtel Power Corp. (2, 3)
Reckold Co. (1, 4)
Becton, Dickinson & Co. (1, 2, 3)
Bell Federal Savings & Loan Assn. (1, 4)
Bell System
American Telephone & Telegraph Co. (ALL)
Bell of Pennsylvania (1, 4, LIM)
Bell Telephone Laboratories (1, 4)

Diamond State Telephone Co. (1, 4, LIM)
*Illinois Bell Telephone Co. (ALL)
New Jersey Bell Telephone Co. (ALL)
New York Telephone Co. (ALL)
Northwestern Bell Telephone Co. (ALL)
Ohio Bell Telephone Co. (ALL)
Southern New England Telephone Co. (ALL)
Southwestern Bell Telephone Co. (4)
Western Electric Fund (1)
Wisconsin Telephone Co. (1, 4)
*Bemis Co., Inc. (ALL)
The Bendix Corp. (1, 3, 4)
Bemis Brecher & Assoc. Inc. (ALL)
Bethlehem Steel Corp. (1, 2, 3, SP)
James G. Biddle Co. (1, 2, 3, SP)
Blount, Inc. (ALL)
Blue Bell, Inc. (ALL)
The Boeing Co. (1, 2, 3, SP)
Boise Cascade Corp. (1, 2, 3)
*Borg-Warner Corp. (1, 4)
The Bowery Savings Bank (1, 2, 3)



Brakeley, John Price Jones, Inc. (ALL)
Bristol-Myers Co. (2, 3)
Brockway Glass Co., Inc. (2, 3)
Brown-Forman Distillers Corp. (ALL)
Brunswick Corp. (1)
Buckeye Mears Co. (ALL)
Buckeye International, Inc.
Bucyrus-Erie Co.
Buffalo Color Corp. (ALL)
Buffalo Savings Bank (ALL)
Bunge Corp. (ALL, SP)
Bunker-Ramo Corp. (2, 3)
Burlington Industries, Inc. (ALL)
Burroughs Wellcome Co. (ALL)
Business Men's Assurance Co. of America (ALL)

C

Cabot Corp. (ALL)
Callex Mfg. Co., Inc. (ALL)
The Callahan Road Improvement Co. (ALL, A)
Campbell Soup Co. (ALL)
Canadian General Electric Co., Ltd. (UM, A)
The Carborundum Co. (ALL, SP)
Carolina Light & Power Co. (1, 2)
Carolina Telephone & Telegraph Co. (ALL, UM, A)
Carpenter Technology Corp. (2)
Carnar Corp. (1, 2, 3)
Carter-Wallace, Inc. (ALL)
Castle & Cooke, Inc. (ALL)
Caterpillar Tractor Co.
Cavalier Corp. (ALL)
Celanese Corp. (2, 3)
Central & South West Corp. (1)
Central Illinois Light Co. (1, 2, 4, PR)
Central Life Assurance Co. (ALL)
Certain-Tied Products Corp. (1, 2, 3)
Chamberlain Manufacturing Corp. (ALL)
Champion International Corp. (ALL)
Champion Spark Plug Co. (3, 4)
The Chase Manhattan Bank, N.A. (ALL)
Chemical Bank (ALL, PR, SP)
Chemtech Industries, Inc. (ALL, A)
Chesapeake Corp. of Va. (ALL)
Chicago Pneumatic Tool Co. (1, 2)
Chicago Title & Trust (ALL)
Chrysler Corp. (1, 2, 3, A, SP)
Chubb & Son, Inc. (1, 4)
CIBA-GEIGY Corp. (ALL)
Cincinnati Bell Inc. (ALL)
C.I.T. Financial Corp. (1, 2, 3)
Citicorp & Citibank, N.A. (ALL)
Cities Service Co. (ALL, SP)
The Citizens and Southern Corp. (ALL, SP)
The Citizens & Southern National Bank (1, 2, 3)
Citizens Fidelity Bank & Trust Co. (2, 3)
Clark Equipment Co. (ALL)
The Cleveland-Cliffs Iron Co. (ALL)
Cleveland Electric Illuminating Co. (ALL)
Cleveland Trust Co. (ALL)
Clinton Mills, Inc. (ALL)
The Clorox Co. (1, 2, 3)
Clow Corp. (ALL)
CNA Financial Corp. (1, 4)
Coats & Clark, Inc. (ALL)
The Coca-Cola Co. (ALL, SP)

The Coleman Co., Inc. (1, 2, 3, SP)
Colgate-Palmolive Co. (ALL, SP)
Collins & Aikman Corp. (ALL)
The Colonial Life Ins. Co. of America (1, 2, 3)
Colonial Parking, Inc.
Colonial Penn Group, Inc. (ALL, SP)
Columbia Gas System, Inc. (ALL)
The Columbus Mutual Life Ins. Co. (ALL)
Combustion Engineering Inc. (1, 2, 3, PR)
Commercial Credit Co. (ALL)
Commercial Union Assurance Co. (ALL, SP)
Connecticut Bank & Trust Co. (ALL, SP)
*Connecticut General Insurance Corp. (ALL)
Connecticut Light & Power Co.
Connecticut Mutual Life Insurance Co. (ALL)
Connecticut Natural Gas Corp. (2, PR)
Connecticut Savings Bank (ALL)
*CONOCO, INC. (ALL)
*Consolidated Foods Corp. (1, 2, 3)
Consolidation Coal Co. (A)
Container Corp. of America (ALL)
The Continental Corp. (ALL)
The Continental Group, Inc. (ALL, SP)
Continental Illinois National Bank and Trust Co. (1, 4)
*The Cook Foundation, Inc. (1)
Frederic W. Cook & Company, Inc. (ALL)
Cooper Industries, Inc. (1, 2, 3)
Cooper Tire & Rubber Co. (1, 2, 4)
Coopers and Lybrand (A)
The Copley Press, Inc. (ALL, SP)
Copolymer Rubber & Chemical Corp.
*Corning Glass Works (ALL)
CPC International Inc. (ALL, SP)
Crocker National Bank (ALL, SP)
Crompton & Knowles Corp. (ALL)
Crompton Co., Inc. (ALL, A)
Crouse-Hinds Co. (1, 2, 3, SP)
Crown Central Petroleum Corp. (1)
Crown Zellerbach Corp. (ALL, SP)
Crum & Forster Insurance Co. (1, 2, 3)
Cutler-Hammer, Inc. (1, 4)
*Cyprus Mines Corp. (1, 4)

D

Dain, Kalman & Quail, Inc. (ALL)
Dana Corp. (ALL)
Daniel International Corp. (ALL)
Dart Industries Inc. (ALL)
Dayton Malleable Inc. (1, 3, 4)
Daera & Co. (1, 2, 4)
DEKALB AgResearch, Inc. (ALL)
Del Monte Corp. (1, 4)
Deloitte Haskins & Sells (1, 4)
Deluxe Check Printers, Inc. (ALL)
Deposit Guaranty National Bank
Detroit Edison Company
A. W. G. Dewar, Inc. (1, 2, 4, PR, SP, A)
The Dexter Corp. (1, 2, 3, SP)
Diamond Crystal Salt Co. (ALL)
Diamond International Corp. (1, 2, 3)
*Diamond Shamrock Corp. (ALL)
A. B. Dick Co. (ALL)
Dickson Electronics Corp.
Difco Laboratories (ALL)
Digital Equipment Corp. (ALL, SP)

Dillingham Corp. (ALL)
The Donaldson Co., Inc. (1, 2, 3)
Donaldson, Lufkin & Jenrette, Inc. (ALL)
*R. R. Donnelley & Sons Co. (2, 3, 4)
Dow Radios Co. (1)
The Dow Chemical Co. (1, 3, 4)
Dow Corning Corp. (ALL)
*Dresser Industries, Inc. (1, 4)
Wilbur B. Driver Co. (1, 2)
Duke Power Co. (ALL)
*Dun & Bradstreet Co., Inc. (ALL)

E

Earth Resources Co. (ALL, SP)
Eastern Gas & Fuel Associates (1, 2, 3)
Easton Car & Construction Co. (1, PR, A)
*Eaton Corp. (ALL)
E-B Industries Inc. (ALL, SP)
Educators Mutual Life Insurance (1, A)
Egan Machinery Co. (1, 2)
Emhart Corp. (ALL, SP)
Envirotech Corp. (1, 2, 3)
The Equimark Corp. (1, 3, 4)
Equitable Life Assurance Society of the United States (ALL, SP)
Equitable of Iowa (ALL)
ESB Ray-O-Vac (1, 3)
Esmark Inc. (1, 3)
*Ethicon, Inc. (2)
Ethyl Corp. (ALL, SP)
Ex-Cell-O Corp. (1, 3, 4)
*Exxon Co., USA (ALL)
*Exxon Corp. (ALL)

F

Factory Mutual Engineering and Research Corp. (ALL, A)
Fairchild Industries, Inc. (ALL)
Farm Credit Banks of Springfield (1, 2, 3)



Matching gifts help underwrite academic programs from business administration and science research to music. The Chamber Singers receive a surprise as they read a will in this scene from Puccini's Gianni Schicchi.

Federal-Mogul Corp. (ALL, SP, A)
Federal National Mortgage Association (ALL)
Federated Department Stores, Inc. (ALL)
Ferro Corp. (ALL)
The Fidelity Bank (1, 4)
Fiduciary Trust Co. (ALL)
Field Enterprises, Inc. (ALL)
*Fireman's Fund Insurance Co. (ALL)
Fireman's Mutual Insurance Co. (1, SP)
The Firestone Tire & Rubber Co. (ALL, SP)
First & Merchants National Bank (ALL)
First Bank (ALL)
First Bank System, Inc. (ALL)
First Boston Corp. (1, 2, A)
First Chicago Corp. (ALL, SP)
First National Bank of Boston (ALL, SP)
First National Bank of Pennsylvania (ALL, PR)
The First National Bank of Miami (ALL, SP)
First National Bank of Minneapolis (ALL)
First National Bank of Oregon (3, A)
The First National Bank of St. Paul (ALL)
First National Holding Corp. (ALL)
First Valley Bank (1, 2, 3)
First Virginia Banks, Inc.
Florida Gas Co. (1, 2, 3)
*Fluor Corp. (ALL)
FMC Corp. (ALL)
Ford Motor Co. (ALL)
Ford Motor Co. of Canada, Ltd. (1)
*Formost-McKesson, Inc. (ALL)
Forty-Eight Insulations, Inc. (1, A)
Foster Wheeler Corp. (ALL)
*The Foxboro Company (1, 2, 3, PR)
Freeport Minerals Co. (1, 2, 3)
H. B. Fuller Co. (ALL)
Fulton Federal Savings & Loan Assn. (ALL)

G

E. & J. Gallo Winery (1, 2, 3, A)
Frank E. Gannett Newspaper Foundry, Inc. (ALL)
Gardner Denver Co. (2, 3)
Gary Energy Corp./Samuel Gary Oil Producer/The Piton Foundation (ALL)
The Gates Rubber Co. (ALL)
General Accident Fire & Life Assurance Corp. Ltd. (1, 2, 3)
General Dynamics Corp. (1)
General Electric Co. (ALL, A)
General Foods Corp. (1, 2, 3, SP)
General Foods, Ltd. (1, SP, UM)
General Housewares Corp. (1, 4, PR)
*General Mills, Inc. (ALL)
General Public Utilities Service Corp. (1, 2, 3)
General Reinsurance Corp. (ALL)
*General Telephone & Electronics Corp. (ALL)
The General Tire & Rubber Co. (ALL)
GenRad, Inc. (ALL, SP)
Getty Oil Co. (ALL)
Gibbs & Hill, Inc.
Gifford Instrument Laboratories, Inc. (1, 2, 3)
The Gillette Co. (1)
Girard Trust Bank (1, 2, 3, SP)
GK Technologies, Inc.
Goldman, Sachs & Co. (ALL)
B. F. Goodrich Co. (1, 2, 4)
Goodyear Tire & Rubber Co. (1)
Gould Inc. (ALL, SP)
W. R. Grace & Co. (1)
Alexander Grant & Co. (1)
Graphic Arts Mutual Ins. Co. (1, PR, A)
The Graphic Printing Co., Inc. (ALL)
Great Northern Naksoa Corp. (1, 2, 3)
Green Giant Co. (ALL)
Greenwood Mills, Inc. (ALL)
Grinnell Mutual Reinsurance Co. (2, 3)
Grissold-Eshleman Co. (A)
Grumman Corporation (1, 3, SP)
The Guardian Life Ins. Co. of America (1, PR, SP)
*Gulf & Western Industries, Inc. (1, 2, 3)
*Gulf Oil Corp. (1, 2, 3, SP)
Gulf States Utilities Co. (1, 2, 3)
The Gurin Group, Inc. (1, 2, 3)

H

*Helioburton Co. (1, 2)
Hallmark Cards, Inc. (ALL)
John Hancock Mutual Life Ins. Co. (ALL, SP)
Hanes Corp. (ALL)
The Hanna Mining Co. (ALL)
Harper & Row Publishers, Inc. (ALL)
Harris Corp. (2, 3)
Harris Trust & Savings Bank (ALL, A)
Harsco Corp. (ALL, PR)
Hart, Schaffner & Marx (SP)
The Hartford Electric Light Co. (1, 2, 3)
The Hartford Insurance Group (ALL)
Hartford National Bank and Trust Co. (2, 3, SP)
The Hartford Steam Boiler Inspection & Insurance Co. (ALL, SP)
*Hawaiian Telephone Co. (1, 2, 3)



All of the college buildings in this aerial view built since 1954 have matching gift money in them of the type described in the accompanying article. This is in addition to major capital

matching challenges such as those made by the Kresge Foundation to the chapel, library, science center and campus center.

H. J. Heinz Co. (ALL)
 *HERCO, Inc. (1, 2, 3, SP)
 Hercules, Inc. (1)
 Hershey Foods (ALL, SP)
 Heublein Inc. (1, 2, A)
 Hewlett-Packard Co.
 Hill Acme Co. (1, PR, A)
 Hoffman-La Roche, Inc. (ALL)
 Homestead Mining Co. (1, 2, 3, SP)
 Honeywell, Inc. (1, 4, SP)
 The Hoover Co. (ALL)
 Geo. A. Hormel & Co. (1, 2, 4)
 Houghton Chemical Corp. (ALL, PR)
 Houghton Mifflin Co. (ALL)
 Household Finance Corp. (PR)
 Houston Natural Gas Corp. (1, 2, 3)
 J. M. Huber Corp. (ALL, SP)
 Huck Manufacturing Co. (ALL)
 Hufsey-Nicolaides Associates, Inc. (A, PR)
 Hughes Aircraft Co. (1, 2, 3)
 Hughes Aircraft Co. (1, 2, 3)
 Huyck Corp. (ALL, SP)

I
 ICI Americas Inc. (1, 2, 3, A)
 *Illinois Tool Works Inc. (ALL)
 *INA Corp. (ALL, SP)
 Industrial Indemnity Co. (ALL, SP)
 Industrial National Bank of R.I. (ALL, SP)
 *Industrial Risk Insurers (1, 2, 3)
 Ingersoll-Rand Co. (ALL)
 Integon Corp. (ALL)
 Interlake, Inc. (ALL)
 International Basic Economy Corp. (ALL)
 *International Business Machines Corp. (ALL)
 International Flavors & Fragrances (ALL)
 *International Minerals & Chemical Corp. (ALL)
 *International Multifoods Corp. (ALL)
 International Nickel Co., Inc. (1, 2, 3)

*International Paper Co. (ALL, SP)
 International Telephone & Telegraph Corp. (1, 2)
 Interpace Corp. (1, 2, 3)
 Investors Diversified Services, Inc. (1, 2, 3, A)
 Irving Trust Co. (1, PR, A)
 ITEL Corp. (ALL, SP)
 Itak Corp. (1, 2, 3)
 IJ International Corp. (1, 2, 3)

J
 Jamesbury Corp. (ALL)
 The Jefferson Mills, Inc. (LIM)
 Jefferson-Pilot Broadcasting Co. (1, 2)
 Jefferson-Pilot Corp. (ALL)
 Jersey Central Power & Light Co. (1, 2, 3)
 *Jewel Cos. Inc. (1, 2)
 Johns-Manville Corp. (ALL)
 Johnson & Higgins (ALL, SP)
 *Johnson & Johnson (ALL)
 S. C. Johnson & Son, Inc. (ALL)
 R. B. Jones Corp. (1, 2, 3, A)
 Jones & Laughlin Steel Corp. (1, 2, 4, A)
 Josten's, Inc. (1, 3, 4, SP, A)
 JSJ Corp. (1, 2, 3)

K
 Kaiser Steel Corp.
 Karmazin Products Corp. (1)
 Kearney-National Inc. (1, 4)
 Keeler Co. (ALL)
 The Kendall Co. (1, 2, 4)
 Kennametal, Inc. (ALL)
 Kennecott Copper Corp. (1, 2, 3, SP)
 The Kerite Co. (1, 2, 3)
 Kerr-McGee Corp.
 Karsling, Brown & Co., Inc.
 Walter Kidde & Co. (1, A)
 Kidder, Peabody & Co. Inc. (ALL, PR)

Kimberly-Clark Corp. (ALL)
 Kingsbury-Machine Tool Corp. (ALL, SP, A)
 The Kiplinger Washington Editors, Inc. (ALL)
 Richard C. Knight Insurance Agency (ALL, A)
 Koehring Co. (1)
 H. Kphastam Co., Inc. (1, 3, A)
 *Koppers Co., Inc. (ALL)
 Kraftco Corp. (1, 4)

L
 The Lanson & Sessions Co. (1)
 Lanier Business Products, Inc. (ALL, A)
 Leeson Corp. (1, 2, 3)
 *Lehigh Portland Cement Co. (ALL, A)
 Lever Brothers Co. (1, 2, 3, SP)
 *Levi Strauss & Co. (ALL)
 The Liberty Corp. (1, 2, 4, SP)
 Liggett Group, Inc. (1)
 Little, Brown & Co. (1, 2, 3)
 Loews Corp. (1, 2, 3)
 Louisiana Power & Light
 Loyal Protective Life Insurance Co. (ALL, SP)
 *The Lubrizol Corp. (ALL, SP)
 Ludlow Corp. (1, 2, 3, SP, A)
 Lukens Steel Co. (1, 2, 3)
 C. E. Lummus (1, 2)
 Lutheran Brotherhood (2, 4, LIM)
 Lutheran Mutual Life Ins. Co. (4, PR)

M
 M&T Chemicals Inc. (1, A)
 Mack Trucks, Inc. (2, 3)
 Maclean-Fogg Lock Nut Co. (1, 4)
 Mallinckrodt Inc. (ALL, PR)
 P. R. Mallory & Co., Inc. (ALL)
 Manufacturers Hanover Trust Co. (ALL)
 *Marathon Oil Co. (ALL)
 The Marine Corp. (ALL)

Maritz Inc. (ALL, SP)
 The Marley Co.
 Marsh & McLennan Management Co. (ALL)
 Martin Marietta Corp. (1, 2, 3)
 Massachusetts Mutual Life Ins. Co. (1)
 Mattei, Inc. (1, 2, 3)
 The Maytag Co.
 MCA Inc. (1, SP)
 McCormick & Co., Inc. (ALL)
 McDonald's Corp. (1, 2, 3)
 McGraw-Hill Inc. (ALL)
 Davy McKee Corp. (1, 4)
 McQuay-Perfex, Co. (ALL, A)
 The Mead Corp. (ALL, SP)
 Meadville Corp. (ALL)
 Medtronic, Inc. (ALL)
 Medusa Corp. (1, 4)
 Mellon Bank N.A. (1, 2, 3, A)
 *Menasha Corp. (1, 4, PR)
 Merck & Co., Inc. (ALL)
 Metropolitan Edison Co. (1, 2)
 Metropolitan Life Ins. Co. (1, 2, 3, SP)
 Mettler Instrument Corp. (ALL)
 Michigan General Corp. (ALL)
 Middle South Services, Inc.
 Middlesex Mutual Assurance Co. (ALL)
 Midland Mutual Life Insurance Co. (1, 2)
 Midland-Ross Corp. (2, 3, 4)
 Midlantic Banks, Inc. (ALL)
 Miehle-Goss-Dexter, Inc. (ALL)
 Milliken & Co. (ALL, PR)
 *Milton Bradley Co. (ALL)
 Minneapolis Star & Tribune Co. (ALL, SP)
 Minnesota Mining & Manufacturing Co. (1, 2)
 The Minnesota Mutual Life Ins. Co. (1, 2, 3)
 *Mobil Oil Corp. (ALL)
 Mohasco Corp. (ALL, A)
 Monroe Auto Equipment Co.
 Monsanto Co. (ALL)
 *Montgomery Ward & Co. (ALL)

Monumental Corp. (1)
 Moog, Inc. (ALL)
 Moore McCormack Resources, Inc. (1, 2, 3)
 Morgan Construction Co. (ALL)
 Morgan Guaranty Trust Co. of N.Y. (ALL, SP)
 Morton-Narwich Products, Inc. (1)
 Motorola, Inc. (ALL)
 Mountain States Mineral Enterprises, Inc. (1, 2, 4)
 Munsingwear, Inc. (2, 3)
 *Murphy Oil Corp. (ALL, SP)
 Mutual Benefit Life Insurance Co. (ALL)
 The Mutual Life Insurance Co. of N.Y. (ALL)
 Mutual of Omaha (ALL, SP)

N
 Nabisco, Inc. (ALL, SP)
 *Nalco Chemical Co. (1)
 National Can Corp. (ALL)
 National Central Financial Corp. (1, 2, 3)
 *National Distillers & Chemical Corp. (1, 2, 3)
 National Life Insurance Co. (ALL)
 National Medical Enterprises, Inc. (ALL)
 National Steel Corp. (1, 3, 4)
 Nationwide Mutual Insurance Co. (ALL)
 *Natomas Co. (ALL, SP)
 N.C.R. Corp. (ALL, SP)
 Nepera Chemical Co., Inc. (1, 2, 3)
 New England Gas & Electric Assoc. (1, 2, 4)
 New England Merchants National Bank (ALL, SP)
 New England Mutual Life Insurance Co. (ALL)
 New England Petroleum Corp. (1, 2, A)
 New Orleans Public Service Inc.
 New York Bank for Savings (1, 2, PR, A)
 The New York Times Co. (ALL)
 The New Yorker Magazine, Inc. (1, 2)
 NL Industries, Inc. (ALL)
 NLT Corp. (1, 2, 3)
 Nordson Corp. (1, 4)
 North American Philips Corp. (ALL)
 Northeast Utilities Service Co. (1, 2, 3)
 Northern Illinois Gas Co. (ALL, PR)
 Northern Natural Gas Co. (1, 4, SP)
 Northern Trust Co. (ALL)
 Northwest Airlines (ALL)
 Northwestern Financial Corp. (1, 2, 3)
 The Northwestern Mutual Life Ins. Co. (ALL)
 Northwestern National Bank of Minneapolis (ALL, SP)
 Northwestern National Life Insurance Co. (2, 4)
 *Norton Co. (ALL, SP)
 W. W. Norton & Co., Inc. (1, 2, 3, SP)
 John Nuveen & Co., Inc. (ALL)

O
 Oakite Products, Inc. (1, A)
 Occidental Petroleum Corp. (A)
 Oklahoma Gas & Electric Co. (1, 2, 3, SP)

Old Stone Bank (ALL, PR)
Olin Corp. (ALL)
Oneida Ltd. (1, 2, 3)
*Ortho Pharmaceutical Corp. (1, 2, 3)
Owens-Corning Fiberglass Corp. (1, 2)
Owens-Illinois, Inc. (ALL)

P

Pacific Mutual Life Ins. Co. (ALL)
Pacific National Bank of Washington (ALL)
Pacific Resources Inc. (2)
Pan American Life Insurance Co. (1, A)
*Panhance Eastern Pipe Line Co. (ALL)
*Parker-Hannifin Corp. (1, 2, 4)
Ralph M. Parsons Co. (1, 2, 3, SP)
Peabody International Corporation (3, A)
Peat, Marwick, Mitchell & Co. (1)
Pechiney Ugine Kuhlmann Corp. (1, 2, 3)
J. C. Penney Co. (ALL, SP)
Pennsylvania Electric Co. (1, 2)
Pennsylvania Power & Light Co.
*Pennwalt Corp. (1, 2, PR)
*Pennzoil Co. (ALL)
Peoples Gas Co. (ALL)
PepsiCo, Inc. (ALL)
PET Inc. (SP)
Petro-Tex Chemical Corp. (1, 2)
Pfizer, Inc. (ALL)
Pheasant Dodge Corp. (ALL, SP)
*PQ Corp. (ALL, SP)
Phillip Morris Inc. (ALL)
Phillips Petroleum Co. (ALL)
Phoenix Mutual Life Insurance Co. (2, 3, 4)
*The Pillsbury Co. (ALL)
Pitney Bowes, Inc. (ALL)
Pittsburgh National Corp. (ALL, A)
Plainfield Cytology Laboratory, Inc. (ALL, SP, A)
Polaroid Corp. (2, 3)
Potlatch Corp. (2, 3, SP)
PPG Industries, Inc. (ALL)
Preformed Line Products Co.
Prentice-Hall, Inc. (ALL)
Price Brothers Co. (1, 2, 3, A)
Price Waterhouse & Co. (1)
Provident Life & Accident Ins. Co. (1, 4)
Provident Mutual Life Insurance Co. of Philadelphia (ALL, SP)
Provident National Bank (ALL, A)
The Prudential Insurance Co. of America (ALL)
Pullman Inc. (ALL)

Q

*Quaker Chemical Corp. (ALL)
*The Quaker Oats Co. (ALL)
Quaker State Oil Refining Corp. (ALL, SP)

R

Ralston Purina Co. (SP)
Rand McNally & Co. (PR, UM)
Arthur D. Raybin Assoc., Inc. (ALL)
Raytheon Co. (1, 4)
Readers Digest Foundation (2, 3)
Reliance Electric Co. (ALL)
Reliance Insurance Co. (1, 2, 4, SP)
Republic Steel Corp. (ALL)

The Research Institute of America, Inc. (1, 2, 3)
Reynolds Metal Co. (1, 2, 3, A)
Rexham, Corp.
Rexnord, Inc. (ALL)
R. J. Reynolds Industries, Inc. (ALL)
Richardson, Gordon & Associates (1, A)
Richardson-Merrell, Inc. (ALL)
*Riegel Textile Corp. (ALL)
Rochester Germicide Co. (1, PR, A)
The Rockefeller Brothers Fund, Inc. (ALL, SP)
Rockefeller Family & Associates (ALL)
The Martha Baird Rockefeller Fund for Music, Inc. (ALL, SP)
Rockwell International Corp. (ALL)
Rohm & Haas Co. (ALL, SP)
ROL M Corp. (ALL)
Roya Globe Insurance Cos. (1, 2, 3)
Arthur Rudick Brokerage (ALL)
Rust Engineering Co. (1, 2, A)
RYCO Inc. (ALL, UM)

S

St. Joe Minerals Corp. (ALL, SP)
The St. Paul Co., Inc. (1, 2, 3)
*St. Regis Paper Co. (1, 2, 3)
Salomon Brothers (ALL)
Saunders Associates, Inc. (ALL, SP)
Sandoz, Inc. (ALL, SP)
Santa Fe Industries, Inc. (1, 4)
Schering-Plough Corp. (ALL)
The Schlegel Corp. (ALL, SP)
*SCM Corp. (1, 2, 3)
Scott Foresman & Co. (SP)
Scott Paper Co. (ALL)
Seaboard Coastline Industries (1)
Joseph E. Seagram & Sons, Inc. (ALL)
Sealright Co., Inc. (1, 2, 3)
G. D. Searle & Co. (1)
Seattle-First National Bank (ALL)
Seattle Trust and Savings Bank (1, 2, 3)
Security Benefit Life Insurance Co. (ALL, SP)
Security Pacific Corp. (1, 4)
Security Van Lines, Inc. (1, 2, SP)
Seton Co. (1, SP, A)
*Shell Oil Company (ALL)
Shenandoah Life Ins. Co. (ALL)
The Sherwin-Williams Co. (ALL)
The Signal Cos., Inc. (ALL)
Signode Corp. (ALL)
Silver Burdett Co. (1, 2, 3)
Simmons Co. (1, 2, 3)
Simpson Timber Co. (1, 2, 3, PR)
The Singer Co. (1, 4, SP, A)
SKF Industries (1, A)
SmithKline Foundation (ALL)
Sony Corp. of America (ALL)
South Carolina National Bank (ALL, SP)
Southeast Banking Corp. (1, 2, 3)
Southeast First Bank of Jacksonville (ALL)
*Southern Natural Resources, Inc. (ALL, SP)
The Southland Corp. (1, 2, 3)
Southwestern Life Insurance Co. (ALL)
Sperry Corp. (1, 4)
*Sperry & Hutchinson Co. (ALL)
Springs Mills, Inc. (ALL)
SPS Technologies (ALL, SP)
The Square D Co. (1)
Squibb Corp. (ALL)
Stackpole Carbon Co. (ALL, SP)
Stanadyne, Inc. (1)

Standard Brands Inc. (ALL)
Standard Insurance Co.
*Standard Oil Co. (Indiana) (ALL)
*The Standard Oil Co. (Ohio) (ALL)
Standard Oil Co. of California/Chevron USA, Inc. (2, 3)
Standard Pressed Steel Co. (ALL, SP)
Stanley Home Products, Inc. (SP, ALL)
*The Stanley Works (1, 2, 3)
State Mutual Life Assurance Co. of Am. (ALL)
Stauffer Chemical Co. (1, 2, 3)
Steel Huddle Mfg. Co. (1)
Sterling Drug, Inc. (ALL)
J.P. Stevens & Co., Inc. (ALL)
Stone & Webster, Inc. (ALL)
STP Corp. (1, 2, 3, A)
*Suburban Propane Gas Corp. (1, 2)
Summit Hill Laboratories (ALL)
Sun Life Assurance Co. of Canada (1, 3)
*Sun Co., Inc. (1, 2, 3)
*Sybron Corp. (1, 2, 4, SP)
Syntex Corp. (1, 2, 3, SP)

T

Tektronix, Inc. (ALL)
*Teledyne, Inc. (1)
Tennant Co. (1, SP)
C. Tennant, Sons & Co. of N.Y. (ALL, SP)
Tenneco, Inc. (ALL)
*Texaco, Inc. (1, 4)
*Texas Eastern Corp. (2)
Texas Instruments Inc. (1, 2, 3, A)
Texasgulf, Inc. (1, 2, 3, SP)
Textron, Inc. (2, 3)
The Thomas & Betts Corp. (ALL)
*J. Walter Thompson Co. (ALL)
J. T. Thorpe Co. (1, A)
Tiger Leasing Group (1, 2, 3)
*Time, Inc. (ALL)
The Times Mirror Co. (ALL, SP)
Times Publishing Co. & Congressional Quarterly (1, 2, 3, A)
Toms River Chemical Corp. (ALL)
*The Toro Co. (ALL, SP)
The Torrington Co. (ALL)
Total Petroleum, Inc. (ALL)
Towers, Perrin, Forster & Crosby, Inc. (1, 2, 3)
Tracor, Inc. (A)
Transamerica Corp. (ALL, SP)
The Travelers Insurance Co. (ALL, SP)
Treadway Co., Inc. (1, 4)
Trust Co. of Georgia (ALL)
TRW Inc. (ALL)
Turner Construction Co. (1, 2, 3, A)

U

UGI Corp. (1, 2)
Union Camp Corp. (ALL)
Union Commerce Bank (1, 2, A, PR)
Union Electric Co. (ALL)
Union Mutual Life Insurance Company (1, 2, 3)
Union Oil Co. of California (2, 3)
*Union Pacific Corp. (ALL)
Uniroyal, Inc. (ALL)
United Airlines, Inc. (1)
United Bank of Denver N.A. (ALL)
United Brands Co. (ALL)
United California Bank (ALL)
United Energy Resources Inc. (ALL)



United Engineers & Constructors, Inc.
United Life & Accident Insurance Co. (1, 2)
United Mutual Savings Bank (2, 3)
United Parcel Service (ALL)
United States Borax & Chemical Corp. (PR)
United States Gypsum Co. (1, 4)
United States Leasing International, Inc. (1, 2, 3, SP)
United States Tobacco Co. (ALL)
United States Trust Co. of N.Y. (ALL, SP)
*United Technologies Corp. (1)
United Telecommunications, Inc. (ALL)
United Virginia Bankshares Inc. (1, 2, 3)
The Upjohn Co. (ALL)
Urban Investment and Development (1, 2, SP)
Utah International Inc. (ALL)
Utica National Insurance Group (PR)

V

Valley National Bank of Arizona (A)
*Varian Associates (1, 4)
Victaulic Co. of America (1, A)
Vulcan, Inc. (ALL, SP)
*Vulcan Materials Co. (1, 2, 3)

W

Wallace-Murray Corp. (ALL)
The Wallingford Steel Co. (1)
Warnaco (1, 2, 4, PR)
Warner Lambert Co. (ALL)
Warner & Swasey Co. (ALL)
Washington National Insurance Co. (ALL)
*Washington Post (ALL)
Watkins-Johnson Co.
C. J. Webb, Inc. (ALL)
Weeden & Co. (ALL, SP, A)
Welch Foods, Inc.
Washington Management Co. (1, 2, 3)
Wells Fargo & Co. (ALL)
West Point Pepperell (2, 3)
Western Publishing Co., Inc.
Westinghouse Electric Corp. (1, 4, A, SP)
Westvaco Corp. (ALL)
Weyerhaeuser Co. (1, 2, 4, PR, SP)
Whirlpool Corp. (ALL)
White Motor Corp. (1, 2, 3)
Wickes Corp. (1, 2, 3)
*John Wiley & Sons, Inc. (ALL, SP)
Willamette Industries, Inc. (ALL)
Williams & Co. (1, 3, A)
Winn-Dixie Stores, Inc. (1, 2, 3, SP)
Wolverine World Wide, Inc. (ALL)
BASF Wyandotte Corp. (1, 2)
Wyman-Gordon Co. (ALL)

X

*Xerox Corp. (ALL, SP)

Y

Yarway Corp. (2, 3, 4, SP)
Arthur Young and Co. (ALL, SP)
William E. Young & Co. (PR, A)
Young & Rubicam International, Inc. (ALL)

TOTAL: 782 companies



1920-1940s

'34 **B. G. WAGNER** is retired Associate Clinical Professor from the University of California Davis School of Medicine.

The family of Helen & **JOSEPH SHIPMAN '33** of Castile, NY, held a reception in honor of their parents' 50th wedding anniversary May 17, 1980 at the United Methodist Church in Perry, NY.

'37 **ANDREW VINCENT**, inventor and owner of Vincent Associates, is a manufacturer of electronic camera shutters. The firm supplied the India Space Agency with shutters to photograph the earth from space, and to Paramount Pictures Corp. to create special effects in *Star Trek — the Motion Picture*.

Down the Aisle

Kevin & Lucia (Endemano ex '78) Bubb '78
Jill (Broman '75) & Mr. Cavaleiro
Dennis & Marjorie (Schoonover '78) Chafin
Jeff & Teri (Mac Iver ex '82) Clark
Timothy & Patricia Dykstra '75
Valerie (Haskins ex '76) & Mr. Errante
Sharon (Boyd '79) & Mr. Hayes
Ellamae (Canterbury '72) & Mr. Hazel
Sara (Swindler '75) & Mr. Haldi
Lynda (Reinhardt '78) & Mr. Howard
Edwin & Debra Kingdon ex '82
Richard & Sharon (Martin '78) Lambertson
James & Terry (Keller '76) Lerew
Alma (Palma ex '75) & Mr. Malikow
Jack & Marjorie (Dunham '75) Miller, Jr.
Mark & Nancy (Clark ex '79) Newblgging
Beverly (Webb '74) & Mr. Perring
Royce & Rebecca (Larris '70) Ross '61
Paul & Loyola (Moser '59) Rundell
Charles & June (Weidemann '69) Senwick
Ellen (Stevens ex '78) & Mr. Shaw
Keodah & Dorothy (Tobemann '64) Somalah
John & Gail Steinhoff '75
Mike & Nancy (Morris ex '74) Swank
Jeff & Georgann (Miller '79) Sylvester '79
Rebecca (Voss '69) & Mr. Turinic

Alumni Authors

The Lure of the Cults, Ronald Enroth, '60, Christian Herald Books, 1979, 139 pages, \$4.50 in paperback.

Now professor of sociology at Westmont College (CA), this is Dr. Enroth's fourth book on contemporary Christianity — or challenges to it — and their sociological impact. He profiles more than two dozen cults in several categories, then explains cultural phenomena that have made cult recruiting easy. He expands on the methodology of various groups, describing specific aberrations from orthodoxy in those cults describing themselves as Christian, and recounting often concealed aspects of belief and practice in others. Finally he outlines possible family and church responses to cultic activity and longterm implications for society.

Since retiring in 1977 after 30 years as a teacher and principal, **JAMES MARSH ex '43** is still teaching — environmental education to elementary school children. He is also the 1980-81 President of the Mid Peninsula Division of the California Retired Teachers' Association.

Both **MARCIA (SCHULTZ '45) PIERCE** and husband Chuck retired early — in 1976 and 1978 respectively — and have since moved to Pioneer, CA.

Marking her 29th year as a missionary to Japan with the Conservative Baptist Foreign Mission Society, **HARRIET PEASE '49** has returned to Susquehanna, PA for a furlough. Last summer she had a brief reunion with HJBA missionaries to Japan **KENN & JANE (CANFIELD '48) CLARK '48**.

Medical missionaries in the Belgian Congo (Zaire) with the Africa Inland Mission for 16 years, **HARRY & WANDA (WILLIAMS '49) WILCKE '49** returned to the U.S. in 1972. They now live in Halboro, PA, where he is a staff anesthesiologist at the Abington Memorial Hospital.

1950s

A consultant to the Olympic Development Committee in Women's Track and Field, **DON STRONG '50** recently received the Distinguished Service Award from the Alameda County (CA) Psychological Association.

'51 **LAURENCE VAIL** has been appointed General Secretary of Foreign Missions of the Orthodox Presbyterian Church.

Pastor of Calvary United Methodist Church, Johnstown, PA, **JACKSON PARSONS '51** and his wife Lola will be hosts for an Israel-Germany tour in September 1980 — their fourth to Israel with a visit to the Oberammergau Passion Play.

On sabbatical from West Chester (PA) State College, **CHARLES STUART '52** spent ten weeks — February 22 through May 2 — in Zaire, Kenya, Israel, Belgium and England conducting research in African studies. The trip was made possible by grants from the American Philosophical Society and the Faculty Development Fund of the college.

Retired from the Army Chaplaincy in October 1978, **THOMAS McINNES ex '53** is now a part-time family & troop counselor at Aberdeen Proving Ground, MD, as well as part-time in church capital fund raising. His wife Ruth is a part-time evening shift charge nurse at Quarryville Presbyterian Home.

Director of Training Services, Bible Club Movement, **DAVID HAAS '55** held teacher training seminars in Europe for missionaries and national volunteer teachers in the United Kingdom, Holland and Italy.

Recently returned from a trip to the Holy Lands, **DORIS (ULRICH '56) KOEHLER** is a church organist and accompanist for Dr. Al Smith, a well-known gospel singer and hymn writer. She gives frequent piano concerts and is on radio programs, one of which is her own.

Pastor of the First Evangelical Congregational Church in Lebanon, PA, since 1976, **HONALD MILLER '57** is involved in the U.S. Army Reserve Chaplaincy and travelled to India and Mexico on denominational tours in 1978 & 1979.

Pastor of the Skipwith Baptist Church, Richmond, VA, **EDWARD STANSFIELD '58** was featured on a *P.M. Magazine* segment on WDVM, Channel 9, Washington, DC. The TV feature covered the National Bicentennial Debates, a program for high school students which Ed originated in 1973 and which he continues to direct. A past president of the VA Speech and Drama Association, Ed initiated the program while he was pastor of Covinth Baptist Church, New Kent, VA and a teacher of English, sociology and speech in Williamsburg. His wife **DOROTHY (HOFFMAN '58)**, hostess for the Williamsburg tournament, is the librarian at Blackwell Primary School in Richmond.

'58 **WALLACE HAVILAND** of St. Louis, MO, works for the Defense Mapping Agency — he's been there for 11 years — helping to produce aviation charts for the military.

Results for **JERRY POWELL'S '59** examination for certification in family practice were all favorable which is especially meaningful since

Alumni Review Sought On Proposed By-Laws

To bring the alumni constitution into line with the articles of incorporation and current practice, the Alumni Board proposes the revised by-laws printed below for alumni comment, preparatory to a vote in October. Significant changes include an increase in the number of board meetings and in board membership, plus designating students, faculty, and staff who have been on campus one year as alumni. The revised document is the result of eight months of work by a task force consisting of officers Chet Hudd, Richard Koch, John Essepian and William Tromble.

PROPOSED BY-LAWS

Houghton College Alumni Association, Inc.

Article I — Name

The name of this organization shall be The Houghton College Alumni Association, Inc.

Article II — Purpose

The purpose of this Association shall be, by the grace of God, to promote the welfare of Houghton alumni, students, faculty, and staff throughout the country and around the world, providing:

- Communication, understanding and fellowship among Houghton alumni;
- Recruiting of students and benefactors for the college;
- Assistance in vocational and employment placement of new graduates and other alumni;
- Prayer and financial support of the college and its programs;
- Assistance for and promotion of the interests of Houghton College by raising of funds, granting of scholarships, erection of buildings and procuring of necessary equipment.



A NEW ALUMNI INFORMATION GUIDE containing alumni addresses, biographical data and regional listings is available from the alumni office at Houghton for \$6.00. Annual fund donors of \$25 or more will receive a copy as a premium through fiscal 1980 which ends June 30.

Eleven

he's spent his entire professional life outside the stateside medical system. The family's plans at this time are to return to Irian Jaya the second week of July.

1960s

'60 ANTHONY YU is Professor of Religion and Literature in the Divinity School and in the Departments of Far Eastern Languages and Civilizations English, and the Committee on Social Thought at the University of Chicago. He has made three research trips to Japan, Taiwan and Hong Kong during the last 10 years and will travel in Europe this summer. The author of 4 books, 22 articles, numerous poems and translations, he is currently working on a complete 4 volume translation of a late medieval Chinese epic and religious allegory. He is National Endowment for the Humanities

Lecturer for Chinese literature in America's Ethnic Heritage Program at the Chicago Public Library during May — June, 1980.

'61 LOINE (ENGLE) BERT teaches music history and private organ at United Wesleyan College, Allentown, PA. She is also singing in the Bethlehem Bach Choir and is music chairperson for Bethlehem Christian Women's Club.

'62 ELIZABETH (HOGELAND) WARD is Principal of Wilmington (DE) Christian School, North Branch. She and her husband, Jim, have lived in Wilmington for seven years; their three children attend Wilmington Christian.

Pastor of Pine City (NY) Baptist Church and a radio minister for 2½ years. HORACE STOD—DARD '62 is Area III Vice President for the American Baptist Minister's Council of New York State.

Completing an M.A. in art history at Michigan State University this summer, PHYLLIS (GILBERT ex'64) MOUW will begin a Ph.D. program at Penn

State University in September. Her husband RICHARD MOUW '61, Professor of Philosophy at Calvin College, has been appointed Visiting Professor of Evangelical Christianity at Juniata College for 1980-81.

Working at Laubach Literacy International, Syracuse, NY, NANCY (GRIDLEY '65) MILLER is editor of their weekly newspaper "New for You" for people with limited reading ability, which reached a circulation of 109,000 a week this winter. She has had a second book published, "Managing Your Money", also written for adults at a low reading level.

JOE LESKO & TOM DANNEY (remnant spirits of '66) met at Caroga Lake, NY in August '79, to paint, canoe and convene a meeting of the short-lived Bullwinkle Party. There being no business to conduct, Joe returned to his C.P.A. work in Herkimer, NY, and Tom to his second year at New Brunswick Theological Seminary, NJ. Classmates may contact them there.

F. Such expert advice and counsel as may be useful to the college trustees, administration, faculty and students on a continuing basis

Article III — Membership

All persons who successfully have completed one full academic year as students, all recipients of honorary degrees, all faculty and staff who have been employed at least one full academic year at Houghton College (or the former Houghton Seminary) shall be members of the Association.

Article IV — Meetings

Meetings shall be held to conduct the business of the Association as follows:

- There shall be at least one general meeting of the Association per year held at Houghton, New York.
- The Board of Directors shall meet at least two (2) times each year.

Article V — Governance

The Association shall be governed by a Board of Directors, consisting of three National Officers: President, President-Elect, and Secretary-Treasurer; at least twelve members-at-large, elected for staggered terms of four years each, and serving not more than three consecutive full terms; the immediate past President serving one four-year term following his/her term as President; and the Director of Alumni Affairs.

The officers shall serve as follows: the President shall hold office for two years; the President-Elect shall serve as Vice-President for two years and then succeed without further election to the presidency; the Secretary-Treasurer shall hold office for one year.

It is expected that Board members shall attend the scheduled meetings. Should they miss three consecutive meetings they will be subject to automatic removal unless retained by two-thirds vote of the Board of Directors.

Vacancies on the Board of Directors shall be filled by a majority vote of Board members present and voting

The Board of Directors shall engage a Director of Alumni Affairs to implement policies and conduct business in accordance with the decisions of the Board of Directors. He/she shall be a member of the Board of Directors by virtue of the office.

Article VI — Committees

Standing and ad hoc committees:

- An executive committee consisting of the President as Chairman, the President-Elect, the Secretary-Treasurer and the three immediate past Presidents, shall be empowered to resolve matters of necessity between regular meetings of the Board of Directors. This committee also is to lend general assistance and advice to the President.
- A nominating committee consisting of three members shall be appointed from the Board of Directors by the Executive Committee at its first meeting following the general election.
- An alumni awards committee shall be appointed from the Board of Directors by the Executive Committee to nominate candidates for the annual *Alumnus of the Year Award*.
- The President may appoint and the Directors may elect ad hoc committees as are deemed necessary.

Article VII — Alumni Chapters and Council

- The Board of Directors may from time to time establish and charter regional and local chapters of the Houghton College Alumni Association.
- The Alumni Council shall be a representative body of the local chapters.

Article VIII — Amendments

To amend these By-Laws, a proposed amendment must be submitted in writing to the Board of Directors for approval and then must be submitted in writing by mail to the membership at least sixty (60) days in advance of the date at which the enabling vote is taken by the membership. The amendment must be approved by two-thirds (2/3) of the members voting.

Article IX — Rules for Guidance

The current revision of Roberts Rules of Order shall be used as a guide for conducting meetings and procedures not expressly outlined by the By Laws.

Article X — Procedures

The Board of Directors, by majority vote, may submit to any general meeting of the Association such procedures as may be thought useful and proper. Upon approval by a majority of those present and voting at such general meeting, such procedures shall become effective in the governance of this Association. These shall be incorporated in the By-Laws under Article X.

- Meetings — A general meeting of the Houghton College Alumni Association, Inc. shall be held at Homecoming.
- Elections — Elections shall take place by mail ballot. Amendments to the By-Laws shall be made in accordance with Article VIII at a general meeting held during Homecoming.
- The Alumni Association shall conduct an Annual Alumni Fund in accordance with Article II-E of the By-Laws.
- Each chapter shall elect for a term of two years, a representative to the Alumni Council. This representative shall have the following qualifications:

- Sustained interest in the College.
- Willingness and time to attend an annual meeting and to implement the program of the Council.

The members of the Council shall meet annually with the Directors and officers of the Alumni Association to perform the following duties:

- Become informed of the overall program of the Association and the development of the College.
- Provide input to the Association and the College for the implementation of their programs.
- Act as a liaison between the Association and the local chapters.

THE ALUMNI ANNUAL FUND PHONATHON has produced some \$15,000 to date, bringing total annual fund gifts from alumni to \$68,000. Conducted within New York State from Buffalo, Rochester, Syracuse and Albany; and long distance to states east of the Mississippi from Houghton, the phonathon reached 2,034 alumni and brought 484 positive responses. Alumni Director Tromble believes that the phonathon will be a prime tool in future annual fund drives.

Future Alumni

Brad & Elizabeth (LeCappelle) ex '75) Beach '75
Bud & Carol (Buckner) ex '68) Bence '66
Gordon & Marilyn (Stevenson) ex '74) Chapman
Bruce & Janice (Simon) '69) Cook '69
Jim & Eileen (Hill) ex '74) Cornell
Wayne & Susan Margaret (Smith) '73) Dobson
Jeffrey & Carol (Treat) '72) Egan
Gary & Connie (Mangham) ex '71) Fairchild '69
Peter & Sandra Finch '68
Mike & Karen (Hartman) '78) Frost '77
Art & Joan (Fisher) '74) Garding '64
F. John & Tish Kelly '77
Ken & Connie (Carlson) '72) Lawrence '73
Gene & Jane (Leh) ex '75) Lee '73
Larry & Carolyn (Sider) '72) Mack '73
Jack & Babs (MacNeill) '72) Merrig '72
Charles & Nancy (Gridley) '65) Miller
Donald & Sharon (Lamos) '73) Oppedisano
George & Rita (Casolare) '72) Orner '73
Stephen & Susan (Thurber) '74) Paine '74
Harry & Glenna (McDonald) '72) Pearson '72
Jack & Janet (Huttenlock) '72) Perry
Michael & Carol (Gass) ex '70) Rogers '70
Daniel & Cheryl (Edwards) '76) Sastik '76
Robert & Joyce (Nichols) '70) Saxer '71
Sandy & Mary (Prentice) '72) Sines
Thom & Margaret Skinner '80
Al & Judi (Tanner) '72) Stolz
James & Shirley (Doutt) '70) Thomson '70
Edward & Nancy (Reed) ex '73) Thornton
Benjamin & Julia (Abdelaziz) '73) Turner
John & Janice (Downey) '76) Walters '76
Duane & Carol (Oldham) '76) Wetmore

* adopted

In Memoriam

H.S. '04 **FRANCIS R. EDDY** of Syracuse, NY died April 12, 1980. He was pre-eminently an evangelist. At his retirement, shortly before his 77th birthday, he had served the Wesleyan Church for 55 years: 15 as pastor; nine as conference official; and 31 in denominational leadership. In 1937 he received the honorary doctor of divinity degree from Houghton College. Memorial services were held at Miller Avenue Wesleyan Church, Syracuse, April 16th. Dr. Eddy is survived by two sons, three married daughters, 8 grandchildren and 10 great-grandchildren.

'19 **MINNIE STEKL** of Fillmore, NY, died February 1, 1980 in Wyoming County Community Hospital, Warsaw, NY.

H.S. ex '23 **LEAH BENNING** of Orchard Park, NY, died April 10, 1980.

'27 **GLADYS TAYLOR** of Rushford, NY, died April 15, 1980 in Cuba (NY) Memorial Hospital after a short illness. She had taught 6 years in NY public schools and five years in release time

classes with the Bible Club Movement. For 10 years she was Superintendent of the Door of Hope Home for Girls in Ulica, NY. She then taught college English for 20 years in Moody Bible Institute; and was teaching at Bryan College Dayton, TN at the time of her retirement in 1971.

ex '29 **ORVILLE KNOX** of Intercession, FL, has died.

In returning an undeliverable piece of mail, the U.S. Post Office reports **DANIEL GALLOT** ex '59 of New Bedford, MA, died January 8, 1975.

Living Memorials

BRUCE MERRITT, JR., by Terry Slye, Dr. Lola Haller; Houghton College Student Senate; Mr. Bruce Merritt, Sr.; Mr. and Mrs. Park Smith, Jr.; Mr. and Mrs. Kevin Knowlton; Mr. and Mrs. Steven Pocock; Miss Sharon Ferguson; Mr. and Mrs. Erwin Knowlton; Ms. Deborah Heacock; Mr. Thomas Frens; Mr. Jeffrey Spear; Miss Rebecca Chase; Miss Laura Bangs; and Mr. Mrs. Timothy Fuller.

ex '67 **LARRY NORRIS** received his Ph.D. in Adult Education from Michigan State University in 1979.

'68 **DEBORAH (HERITAGE) PATRUM** will complete her master of education administration degree in June at San Francisco State University.

On nine months furlough from their work in Surabaya, **GARY & CONNIE (MANGHAM) ex '71) FAIRCHILD '69** are living in Nyack, NY while Gary pursues a master's degree. They plan to return to the church-planting project they were coordinating with its stated goal of 500 churches in 10 years in Java.

'69 **DAVE & KATHY (MCGRATH) '69) SNYDER** have begun service with the American Lutheran Church in Madagascar. Dave completed a residency in General Surgery at the University of Wisconsin in 1978 and practiced in WV until January 1980.

1970s

After six years as a medical secretary, **PEGGY (CLOSE) ex '73) DEESE** has enrolled in music therapy program at the School of Music, Catholic University of America, Washington, DC. Her husband Mike is an attorney with Pettit & Martin in DC.

'74 **KATHLEEN JOHNSON** is in her third year teaching at ELWA Academy in Monrovia, Liberia, West Africa. She plans to continue as a career missionary.

'74 **STEPHEN J. PAINE** will graduate with an M.Div. degree from the Calvary Baptist Theological Seminary in May, 1980. He is looking forward to a pastorate in the New England area.

'75 **BRAD BEACH** is a Ph.D. candidate in philosophy at Syracuse (NY) University. His wife **ELIZABETH (LECAPPELAIN) ex '75)** is a nurse in the intensive care nursery at Crouse-Irving Memorial Hospital, Syracuse.

'75 **DANIEL BRUBAKER** completed his B.S.N. at the University of Akron in 1978. That summer he became a member of Wycliffe's Summer Institute of Linguistics. He then worked a year in the burn ward of Akron's Children's Hospital. Since completing his linguistic training at SIL, he left April 16 for Switzerland for French language study. His fiancée Lucia Rose Tedesco will join him after their marriage this summer.

'75 **TIM DYKSTRA** will return to Shenandoah National Park, VA, this summer as director of the Park Ministry. His bride Patricia will serve as the pastor at Skyland Lodge in the park.

'75 **BARBARA KNIGHT** has just completed her second season as a performer and teacher with the Richard Morse Mime Theatre in Brooklyn, NY.

ex '75 **DONALD SEYLER** is assigned to the Air Force Wright Aeronautical Laboratories at Wright-Patterson AFB, OH. He is a crew systems engineer in the Flight Dynamics Laboratory and is presently finishing an engineering simulator for the boom station on the KC 135 refueling aircraft.

'78 **PHIL NICHOLS** joined Campus Crusade for Christ after graduation and currently works with the high school ministry in Olathe, KS.



David Jack

New Basketball Coach

Athletic Director Bob Rhoades has announced that Mr. David Jack has signed to coach the men's basketball team. Jack's coaching experience covers 11 seasons at the high school level where he won a sectional title.

Coach Jack is already busy looking for new players. He met with returning veterans to outline measures each should take to develop more fully as a player. Coach Jack predicts a fast-paced and exciting brand of ball which should produce a winning season as well as please the fans. The players are eager and anticipating playing in the new physical education center. A western New York-er, Jack is now at Spring Arbor College.



Brian Rhoades was invited to play in the Queen City Classic representing Western New York players against a traveling All Star Squad from the Midwest. Brian played well along with other stars from Canisius, Niagara, St. Bonaventure, and several Buffalo area players from more distant schools.

BASEBALL

The baseball squad finished with a 5-8 record. Mark Carrier finished as the top hitter with a .367 average. Dave Weber followed with a .273 mark and a club leading 11 bases on balls. The only two homeruns of the season were blasted by Todd Baker. Marc Dickinson led the pitchers with a 2-1 record. Pat Smith added some strong relief work and was credited with a 1-1 record and the lowest earned run average.

SOFTBALL

The women's softball team got off to a terrible start dropping their first five contests. Then came the turn-around. They swept their next five with double

ATHLETIC AWARDS - 1980

The following persons were honored at the annual awards banquet:

Soccer: MVP — Steve Burke, Best Offense — Steve Burke, Best Defense — Peter Fuller. Cross Country: MVP — Keith Solomon. Field Hockey: Most Improved — Gretchen Berquist. Volleyball: Rosemary Essepian. Basketball: MVP — Tedd Smith, Ann Taylor. Baseball: MVP — Mark Carrier. Track: MVP — Don McKay.

Others cited were: Babbitt Awards — Soccer, Brian Davidson; Basketball, Tedd Smith. Sportsmanship Awards: Jon Baldwin and Carol Smalley. Senate Excellence Award: Robbie Jacobson and Carol Smalley. PCAC All Star Basketball Team: Tedd Smith and Martie Winters.

header wins over Roberts Wesleyan and St. Bonaventure; and a single win over Canisius. A winning season slipped away as they dropped the opener of a twin bill against Eisenhower. They gained a season split at 6-6 as they pounded Eisenhower in the second game 11-3.

Robin Pettingell showed real strength in pitching while Nancy Lucas (.375), Carol Schultz (.360), and Cindy Royston (.352) led the hitters.

Campus News

\$50,000 Grant Made for Color TV Equipment

Houghton College has been awarded a \$49,825 grant by the Carnahan-Jackson Foundation of Jamestown, NY, made in support of the college audio-visual department's expansion into color television — phase one of a 10-year modernization and growth program.

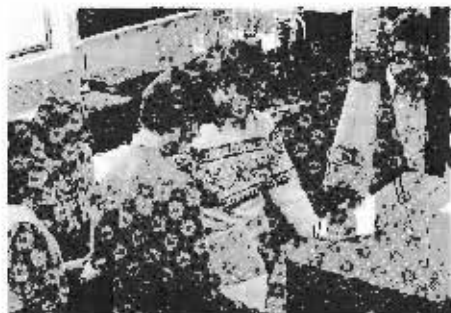
The grant proposal pointed out that existing black and white equipment, though obsolete and prone to breakdown, already serves 26 percent of the students. The new equipment, which is to include a basic color studio and portable package, control console, lighting, a character generator, portable video recorder, editing equipment and tapes, will accommodate academic use by science and fine arts students. The Admissions,

Alumni, and Institutional Advancement offices expect to use color video tape to provide up-to-date, personalized views of the college to prospective students, alumni and other college friends, as well as document local figures and events for college archives.

Professor Cook, who coordinates Houghton's audio visual program, said that "receipt of the grant now is especially timely because the BOCES network television signal has just become available in Allegany County." In addition to expanded academic programs at the college, Mr. Cook envisions that the new equipment made possible by the grant "can provide a programming resource to the county while expanding the public

awareness of the college." Serviceable black and white equipment will be used in support of continuing education programs at the college's Buffalo Suburban Campus and for taping and review of athletic events.

Audio-visual Equipment Supervisor Gary Johnson anticipates that the first demonstration video to be made available for the BOCES network will be faculty recitals and other fine arts programs, and sees acquisition of the color equipment as a first step toward full production unit capability. Final equipment selection and purchase, together with remodeling of campus studio facilities will occur over the summer.



Students' NSF Grant

A team of six junior chemistry and biology students has been awarded a \$9,610 National Science Foundation grant to conduct studies here this summer on the use of silver ions as an antibacterial agent. The project will investigate ways to control the bacteria most commonly found in burn wounds and bone infections. Selected on the basis of their academic merit, laboratory technique, personal enthusiasm and ability to function as a team, the students are: Timothy Benning, Beverly Bowker, Kenneth Lord, Kim Ruhl, Mark Versland and Robert Wilson.

Student project director Wilson said the research grant — the first of its kind awarded to Houghton students — will be used to cover equipment costs, supplies and stipends for the participants and their advisor, chemistry department head Dr. Larry Christiansen.

Kettelkamp Kanoë Kaper

Houghton physical education professor Tom Kettelkamp and soccer goalie Kevin Austin will travel 980 miles by Adirondack guideboat this June to help raise funds for Houghton's new gym.

The men will put their 17-foot craft in the Ohio River near Three Rivers Stadium in Pittsburgh. During the two-week journey they'll pass through Alliquippa, PA; Steubenville, OH; Wheeling, Parkersburg and Huntington, WV; Cincinnati; Louisville; and Evansville, IN, ending at Tom's family home in Old Shawneetown, IL.

Alumni chapters along the route, plus varsity letter-winning alumni since Houghton began intercollegiate athletics will be contacted for pledges keyed to the 980-mile route.

ARTICLES PUBLISHED

Dr. Carl Schultz, Chairman of the Religion and Philosophy Division; and Mrs. Dionne Fuller Parker, Director of Student Health Services, each had articles accepted for publication.

Dr. Schultz's article "The Political Tensions Reflected in Ezra-Nehemiah" was published by Pickwick Press of Pittsburgh in March as part of a larger volume of works entitled *Scripture in Context: Essays on the Comparative Method*. The volume contains papers researched and written during a 1978 summer seminar on "Biblical History in Its Near Eastern Setting" sponsored by the National Endowment for the Humanities at Yale University. During that seminar, Dr. Schultz worked under the direction of Dr. William W. Hallo, Curator of the Babylonian Collection, using the Biblical text and extra-biblical literature in studying the historical relationship between the two Old Testament books. The resulting chapter "deals with the post-exilic tension between the returning Judaeans and their northern neighbors, the Samaritans." These tensions, he found, were at first political rather than religious. Dr. Schultz added, "The Neo-Babylonian text serves a comparative purpose, enabling us to understand the Biblical text."

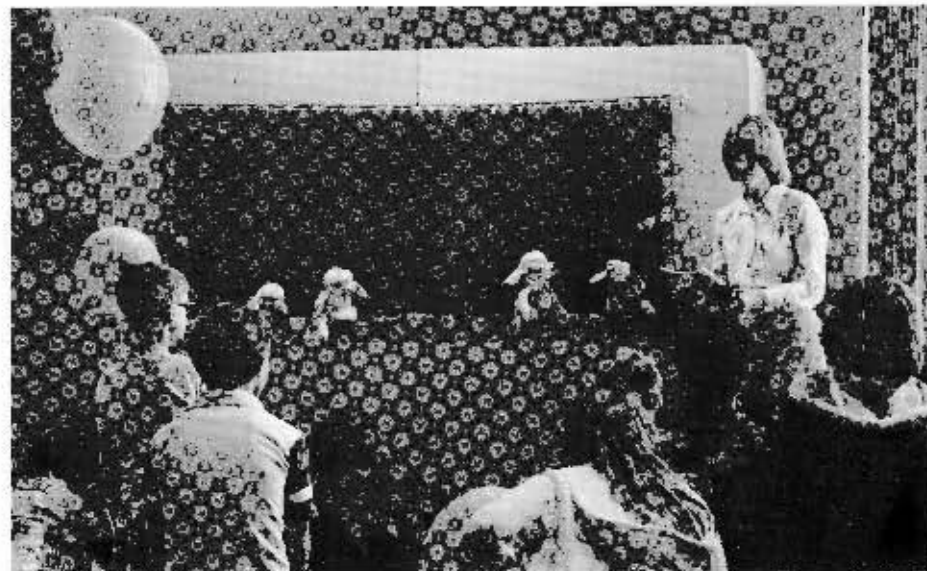
Mrs. Parker's paper, "A Health 'Happen-In Booth' in the Campus Center", has been accepted for publication in the June issue of the *Journal of the American College Health Association*. The article gives "how-to" details of holding campus health fairs as initiated here by Mrs. Parker and currently sponsored by the Health Center. She also notes beneficial results of the health booths — "more student involvement; the health-educational thrust; and the fact people feel freer to talk about health concerns there than at the Health Center."

400 TO ATTEND MAY TERM

Some 400 students are enrolled for May Term classes ranging from traditional to mime theater and initiative training here. Off campus are study trips to Paris and New York, plus a sports venture to Honduras. Regular summer sessions will continue until July.

A CAR FOR MINISTRIES

Student outreach ministries gained use of a low-mileage 1975 Ford LTD sedan, thanks to Mr. Everett Hilliard of McGill Motors, Indiana, PA. Chaplain Richard Bareiss is delighted and says his goal is a fleet of five vehicles. Persons interested in donating a vehicle should contact him in care of the college.



Houghton College hosted the Allegany-Cattaraugus Region Very Special Arts Festival April 21. Secretariat Office Manager Katherine Moore was on-campus coordinator for the event which attracted 627 special students, their teachers, parents and friends. Some 175 Houghton student volunteers participated in 25 workshops, demonstrations and 11 stage performances. Examples of the children's art, ranging from marionettes and paintings to filmstrips, were exhibited. New York State Department of Education and Committee on Arts for the Handicapped was sponsor.



The Wilts and Robert Mattke

Sabbaticals Slated

Seven faculty members will begin sabbatical leaves of one semester to a year this fall.

Bible and Theology Professor Robert Mattke of the Buffalo Suburban Campus will spend eight months in Australia, New Guinea, the Philippines and Japan. In May the Mattkes will interrupt 11 years at Buffalo and fly to Melbourne where he will teach at Kingsley College and Mrs. Mattke will work in the library. He was principal there from 1953-61 when they were Wesleyan missionaries. He also plans to attend the Leon Morris lectures at Ridley College and study at Australia Institute of Archaeology.

During August they will visit Japan where he will address Immanuel Gospel Mission alumni and pastors on the contributions of John Fletcher to the historic Wesleyan movement. In the Philippines and New Guinea, they will visit a theological training school and a mission headed by one of his former students. He'll then address the annual missions conference of the Australian Wesleyan Church and visit congregations along the east coast from Brisbane to Melbourne before returning home.

Professors Lloyd and Lois Wilt, on faculty here since 1968, will pursue their professional specialties, she in music, he in English. Mrs. Wilt will spend six weeks at the Kodaly Musical Training Institute, studying that approach to elementary music education, visit area junior high schools to explore placement possibilities for student music teachers, observe on various college campuses and study in her own specialty, the flute.

Dr. Wilt will travel in New York and New England visiting literary shrines, researching not only the literary significance of each, but the logistics of traveling from one to another — all as the basis for a possible American Literature course. He'll prepare several literary criticism pieces for publication, and attend three professional conferences.

MILIEU will outline the sabbatical plans of Drs. Larry Christiansen, Richard Gould and David Howard in the July issue.



Above: Physical Education Department Head Dr. George R. Wells (r) and alumni trustee Dr. John Essepian of Latham, NY, placed a granite block as hundreds of students, faculty, staff and trustees observed cornerstone ceremonies for the physical education center April 11. President Chamberlain reminded the assembly that red bricks from the original Seminary building of 1883 had been incorporated into Bedford Gym, and said that as a dual commemoration, those same bricks together with yellow brick from Bedford Gym will be prominently inserted in an interior wall of the new structure. Former Superintendent of Buildings and Grounds Robert Fleg, (extreme left above) now overseeing construction of the new center, offered the benediction. The building is essentially enclosed with work on the pool, elevated indoor track and exterior and interior walls progressing on schedule. Plumbing and heating work will occupy the summer with completion expected this fall. More than \$1,000,000 is yet needed to occupy the center debt-free. (See page 14).

Recognition Dinner, Senate Awards Honors

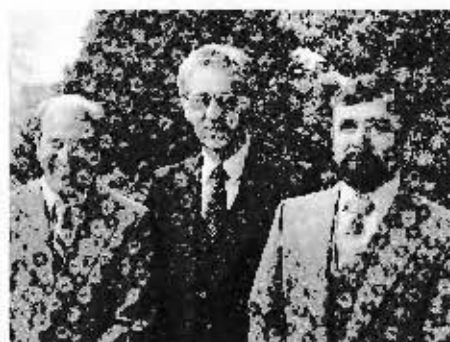
At the annual staff recognition dinner in April, President Chamberlain cited 18 fulltime employees and three trustees for a combined 300 years service. Presented gold watches for 25 years were Board of Trustees Chairman Herbert Stevenson and Assistant to the Librarian Edith Redman.

A Kodak engineer and executive, Mr. Stevenson was board vice-chairman for

14 years before becoming chairman in 1974. A 1938 Houghton graduate, he lives in Spencerport, NY. Mrs. Redman is a cataloger-librarian. Also a 1942 alumna, she has a master's degree in library science from SUNY at Geneseo.

Dr. Chamberlain recognized 11 employees for 10 years of service with wall plaques. Four more received engraved desk pen sets for 15 years on the job. Given engraved silver trays for 20 years with the college were: Mr. Arnold Cook, Professor of Business Administration; Dr. Daniel Heinz, Vice Chairman of the Board of Trustees; Miss Ellen Kreckman, Assistant to the Librarian and Dr. Frederick Shannon, Academic Dean.

During a Student Senate Excellence Awards chapel, Senate President Leah Omundsen cited three college personnel for outstanding service and presented each with an engraved pewter plate. Recipients were: faculty — Dr. David Oettinger, biology; staff — Mr. Roland Fletcher, carpenter; administration — Mr. Donald Frase, controller.

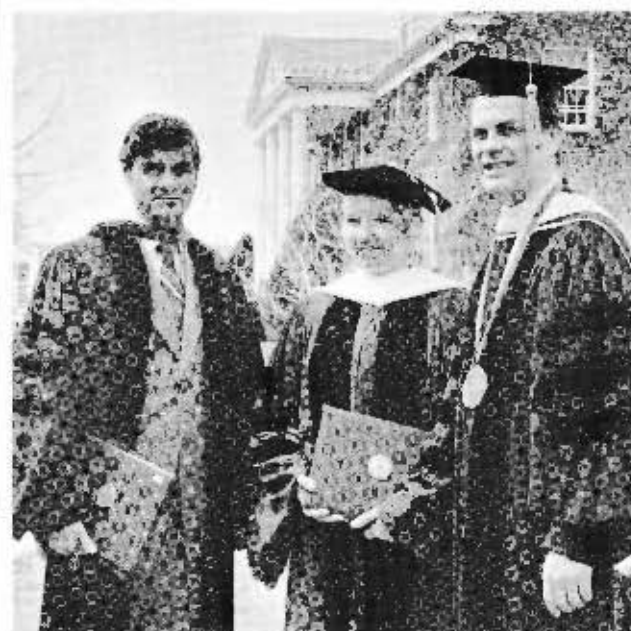


Above: Student Senate honored Mr. Frase, Mr. Fletcher and Dr. Oettinger. Also during that chapel, two classmates of the late Bruce Merritt '79, presented the first scholarship in his memory to Robert Reese, Class of '80. Reese will be attending Delaware Law School this fall.

Name _____

Address _____

City _____ State _____ Zip _____



L. to r.: Rev. Zacharias, Dr. Church with President; Valedictorian Schmitz; happy seniors; Salutatorian Crocker — a fourth generation graduate.

262 Graduates Urged to Awareness, Evaluation, Commitment

Common to the three Commencement '80 address was the stated necessity for the new graduates to be aware of their surroundings, of their priorities and commitments in order to meet life goals as faithful representatives of Christ.

Baccalaureate speaker, Rev. Ravi Zacharias cited the prophet Jonah as "a preacher whose heart was not in his message," and contrasted him with David Livingston whose commitment was, "lead me anywhere, but go with me; lay any burden on me, but sustain me; sever any relationship but the ties that bind me to thee." Commencement speaker Church urged the graduates to set objectives and consider their implied obligations, to be sure objectives are consistent with personality, training, skills and values; to engage in "periodic stock-taking or review of what you are thinking, valuing, doing and saying."

FMF speaker Donald Bray based his message on a New Guinea proverb — "Who is your father? where is your home?" as questions whose answers provide a scriptural alignment for life and mission. He set forth "the incarnational model" of Christ in Philippians 2, summarized as "voluntary release of justifiable perquisites, renunciation of

[selfish] ambition and a relationship of servanthood." Bray is Personnel Director for Wesleyan World Missions.

At the conclusion of commencement ceremonies, President Chamberlain presented a Doctor of Divinity degree to Rev. Zacharias, international Indian evangelist, now Professor of Evangelism and Contemporary Thought at Alliance Theological Seminary, Nyack; and a Doctor of Letters to Dr. Martha Church, President of Hood College. Both speakers were profiled in the March MILIEU.

At the annual FMF service, student leaders announced that \$9,258 was needed by June 1 to meet the \$23,900 annual budget commitment. During the service \$2,319 in cash and pledges was received. Thirteen students are summer missionaries under FMF sponsorship (see story on page 5).

Each of the 262 graduates has a story worth telling, but Dean Shannon cited "the graduation of Houghton's first grandmother", in the person of Wellsville, NY, resident, Mrs. Janet Atkins. President and Mrs. Chamberlain's eldest daughter was among the 11 faculty/staff children to graduate.

Valedictorian Barbara G. Schmitz of North Collins, NY, completed her B.S. degree with a cumulative 4.000 grade-point and a major in business administration. Her parents are Mr. and Mrs. Joachim Schmitz. Here Barbara was a member of Young Administrator's Organization, active in intramural sports and was elected Junior Class vice president. Last fall she participated in a business internship as an administrative resident at Erie County Medical Center in Buffalo. She plans a career in hospital administration.

Salutatorian Valerie A. Crocker is the daughter of Dr. and Mrs. Forrest Crocker, Akron, OH. She earned her B.Mus. and and 3.990 grade-point majoring in music and piano. Valerie participated in the college and chapel choirs, Music Students Advisory Committee, Dorm Liaison Committee and intramural sports. She was 1979-80 recipient of a \$1,000 Presser Foundation Scholarship and one of 11 seniors named to *Who's Who in American Colleges and Universities*. She expects to be married this spring, has been accepted at Hartt School of Music and plans a career in college level piano pedagogy.

Above: Valerie, her parents and grandparents, Dr. and Mrs. Ernest Crocker — all alumni — at her senior piano recital.