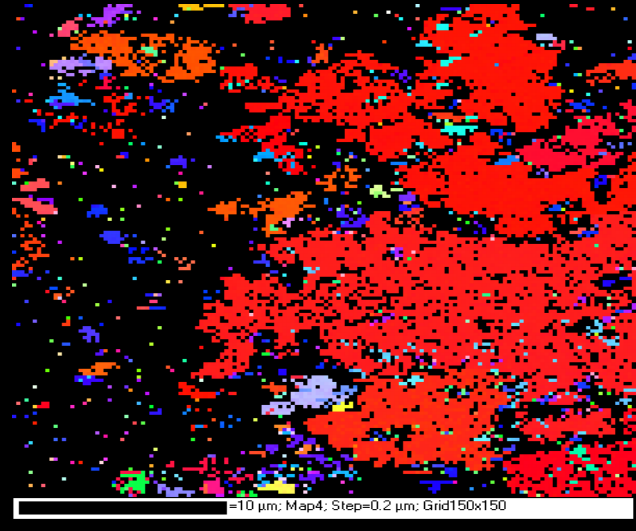
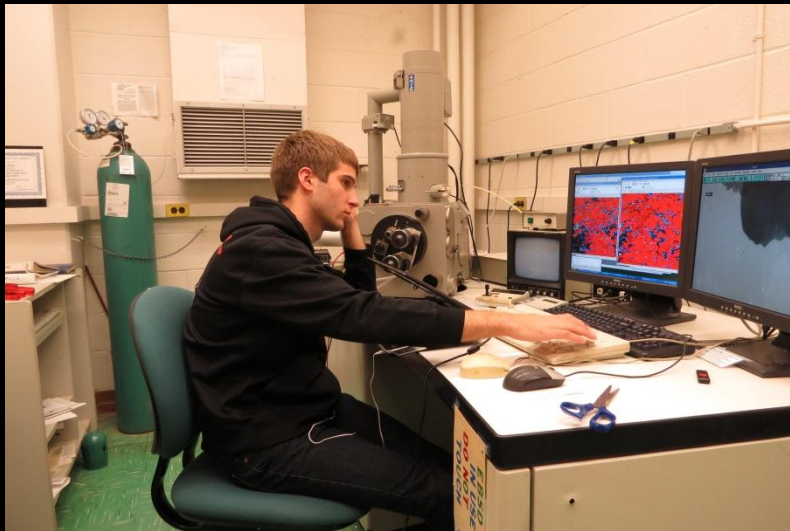
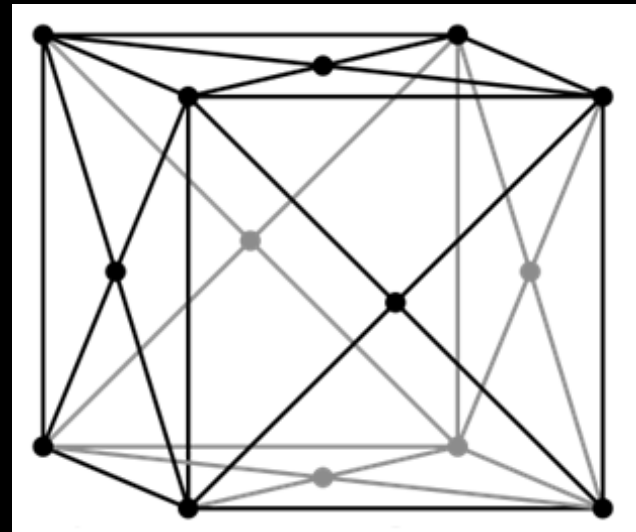




# Crystal Transformation In Thin Silver Films

Ethan Ocock and Emily Morrow  
Houghton College  
Cornell University



# Thin Films

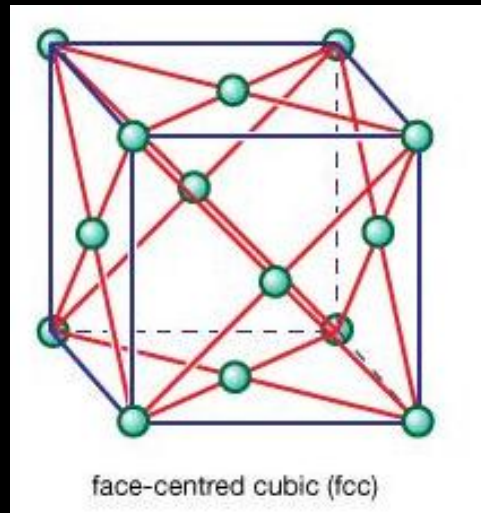
- Up to a few micrometers in thickness
- magnetic storage media (hard drives), circuit boards, and protective coatings



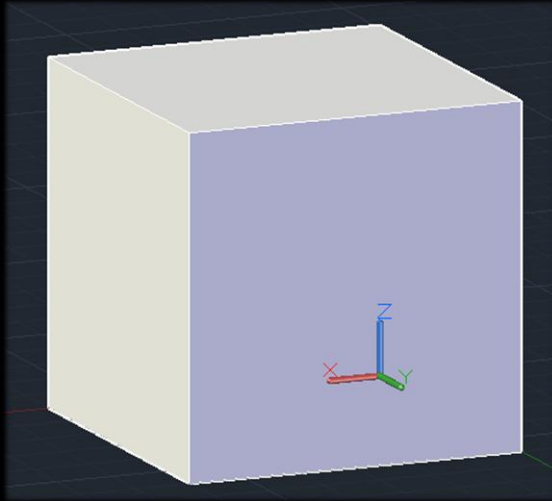
# Crystallography

A crystal is a repeated structural pattern.

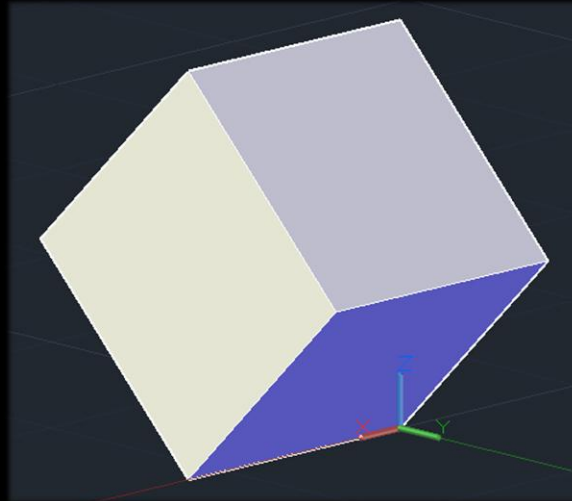
For silver, this is a face centered crystal (fcc).



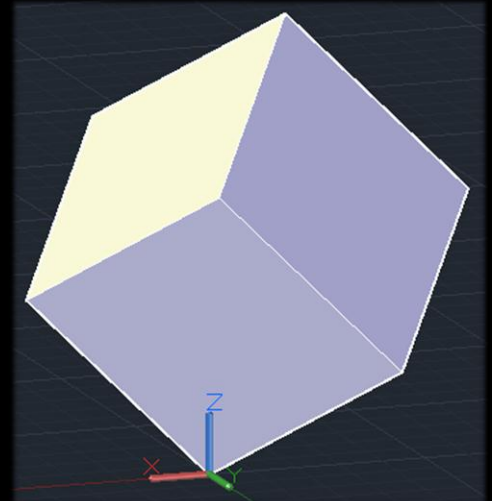
# Crystal Orientations



$\langle 100 \rangle$

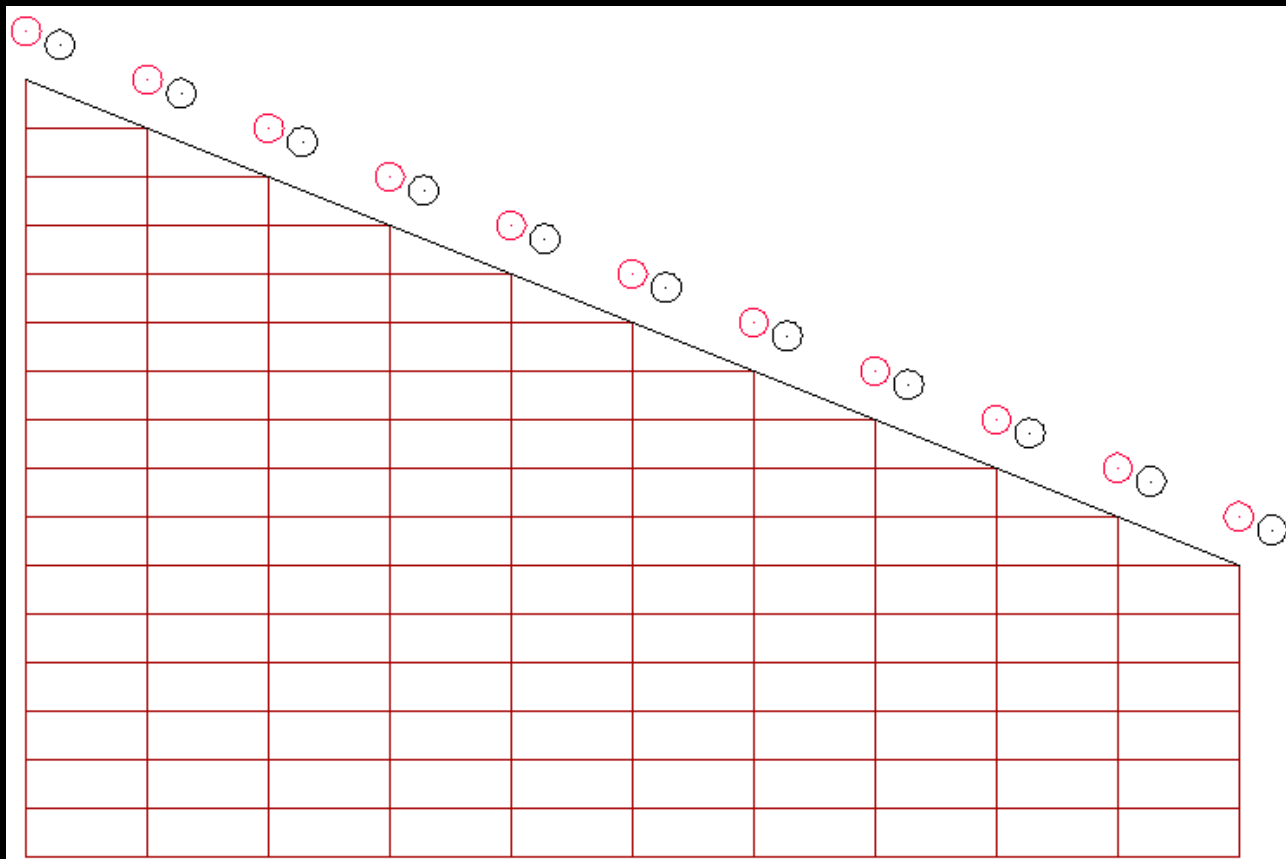


$\langle 110 \rangle$

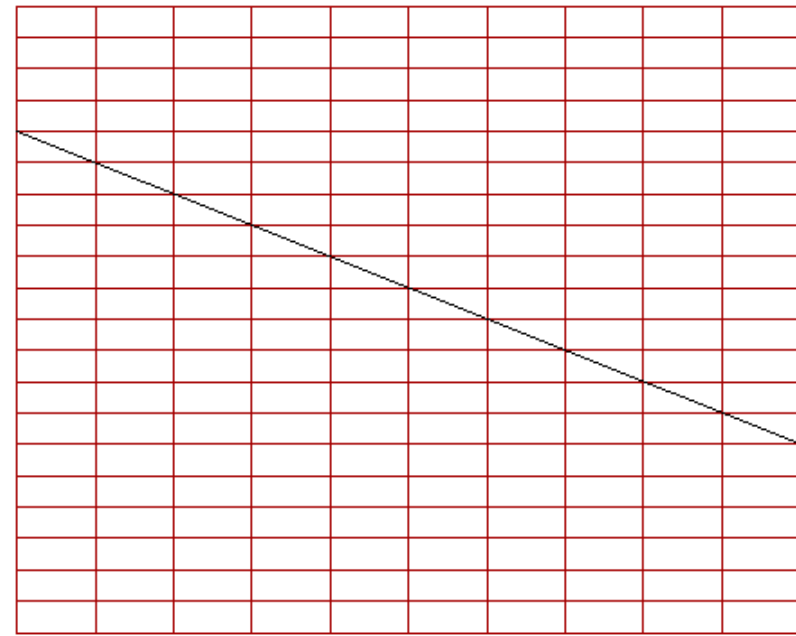
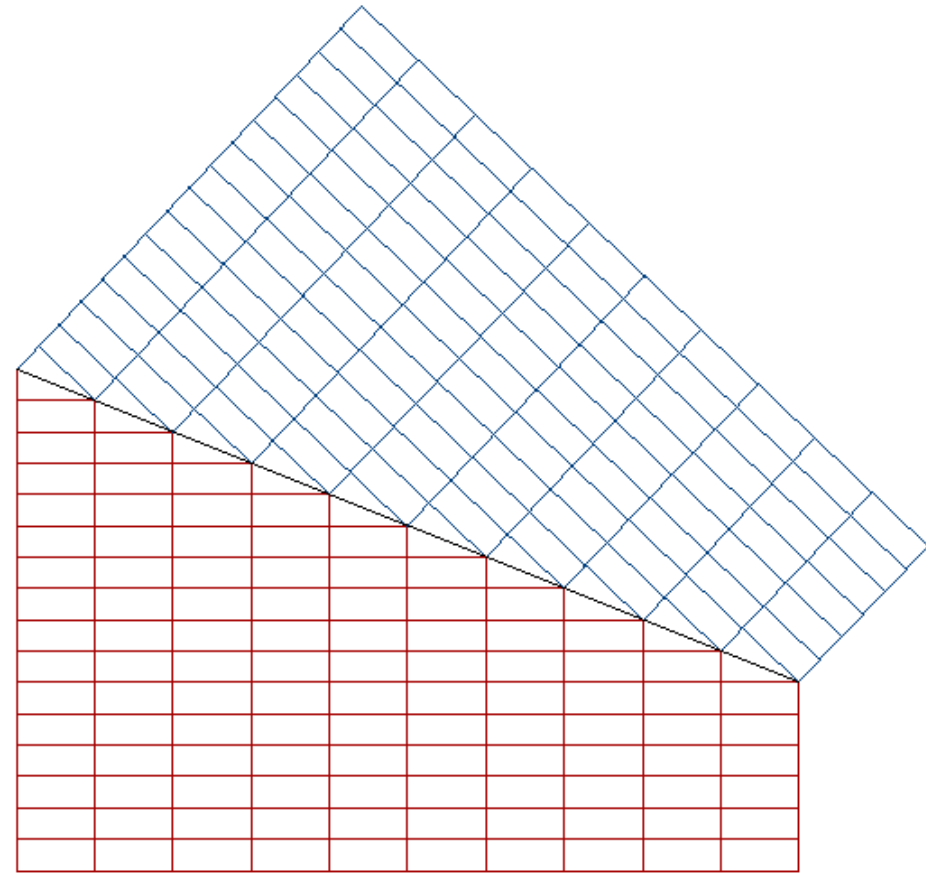


$\langle 111 \rangle$

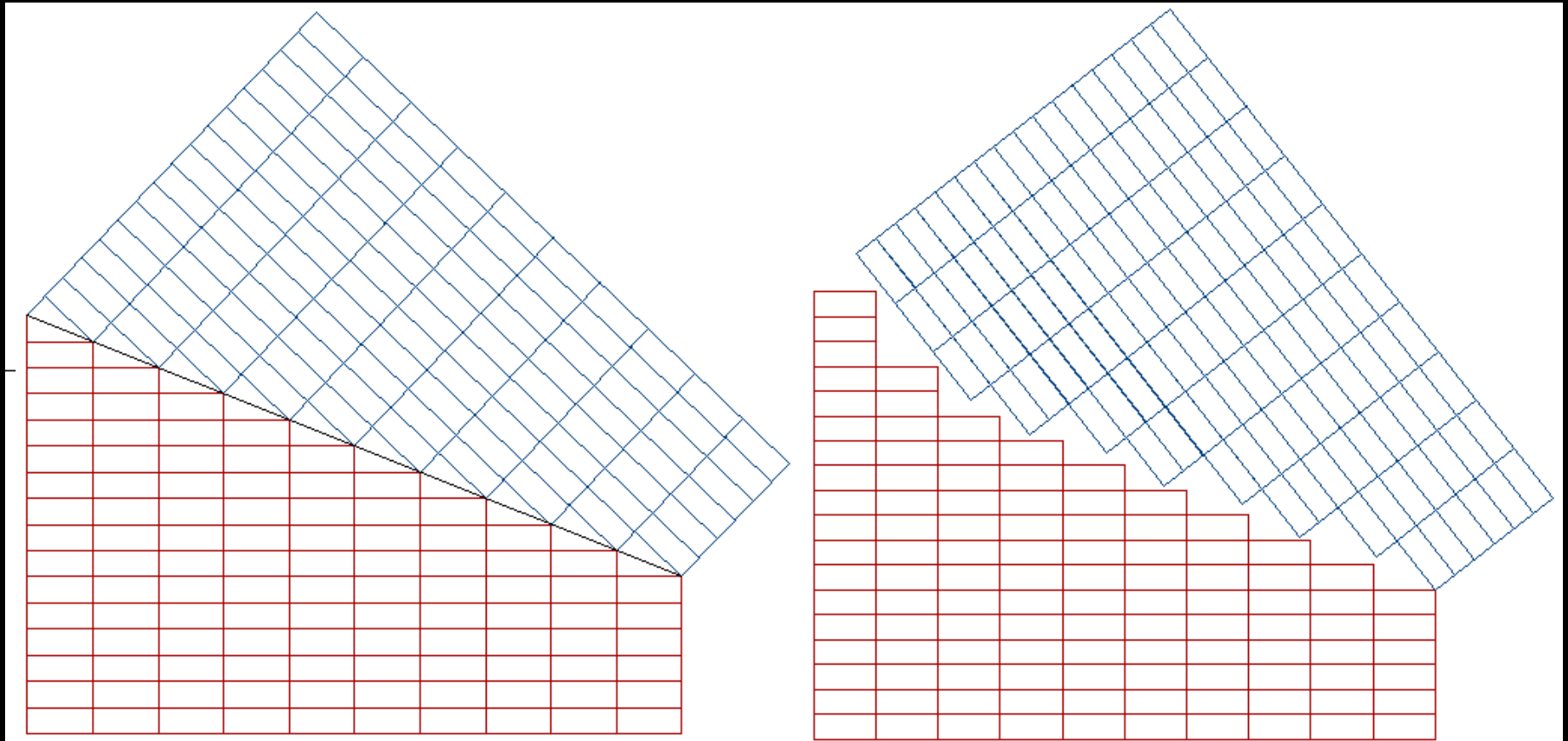
# Twinning



# Twinning



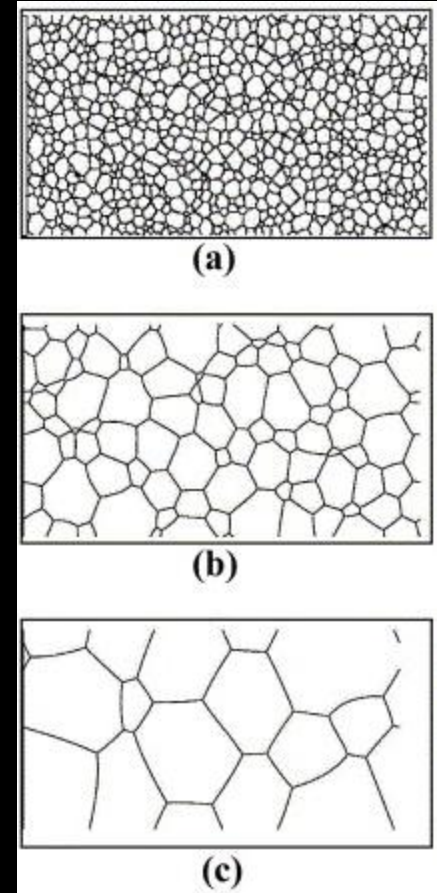
# Twinning





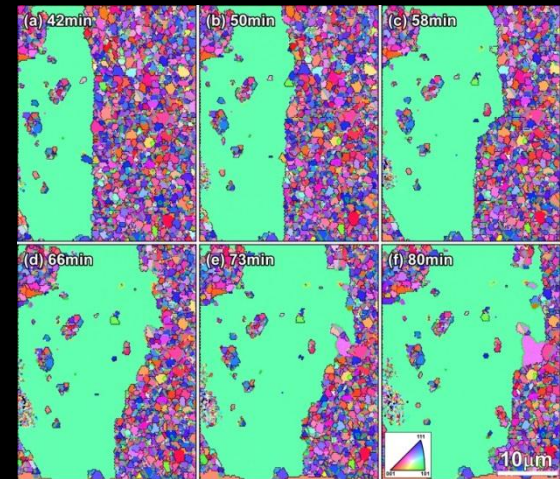
# Normal Grain Growth

- Big grains eat little grains
- Energy reduction
- Will eventually stop



# Abnormal Grain Growth

- Consumes grains that are much smaller
- Grows indefinitely
  - Other Abnormal growth
  - High density grains





# Motivation

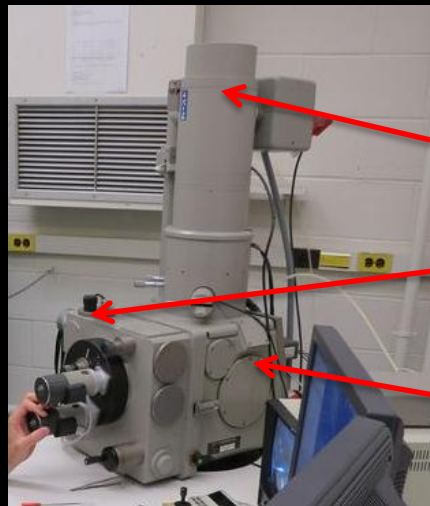
What are the driving forces which cause the transformations?

What kinds of grain growth occur?

How do grains grow?

# Apparatus

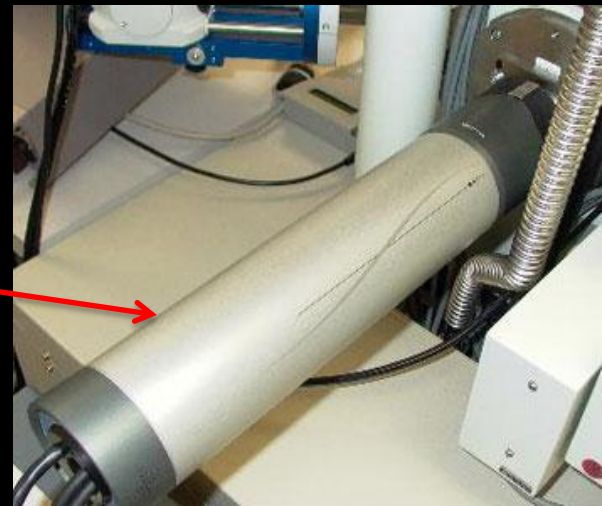
- Scanning electron microscope (SEM)
- Electron backscatter diffraction (EBSD)



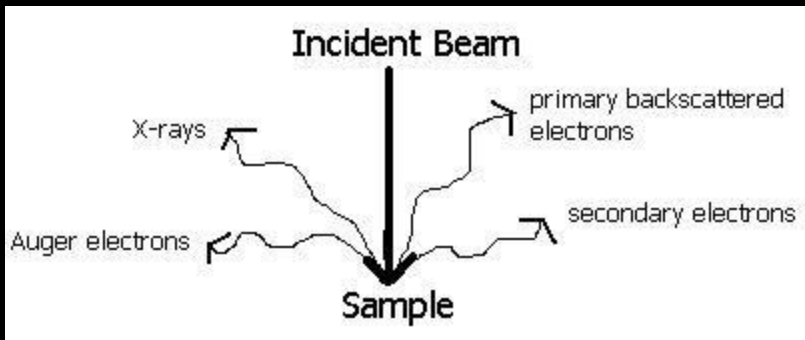
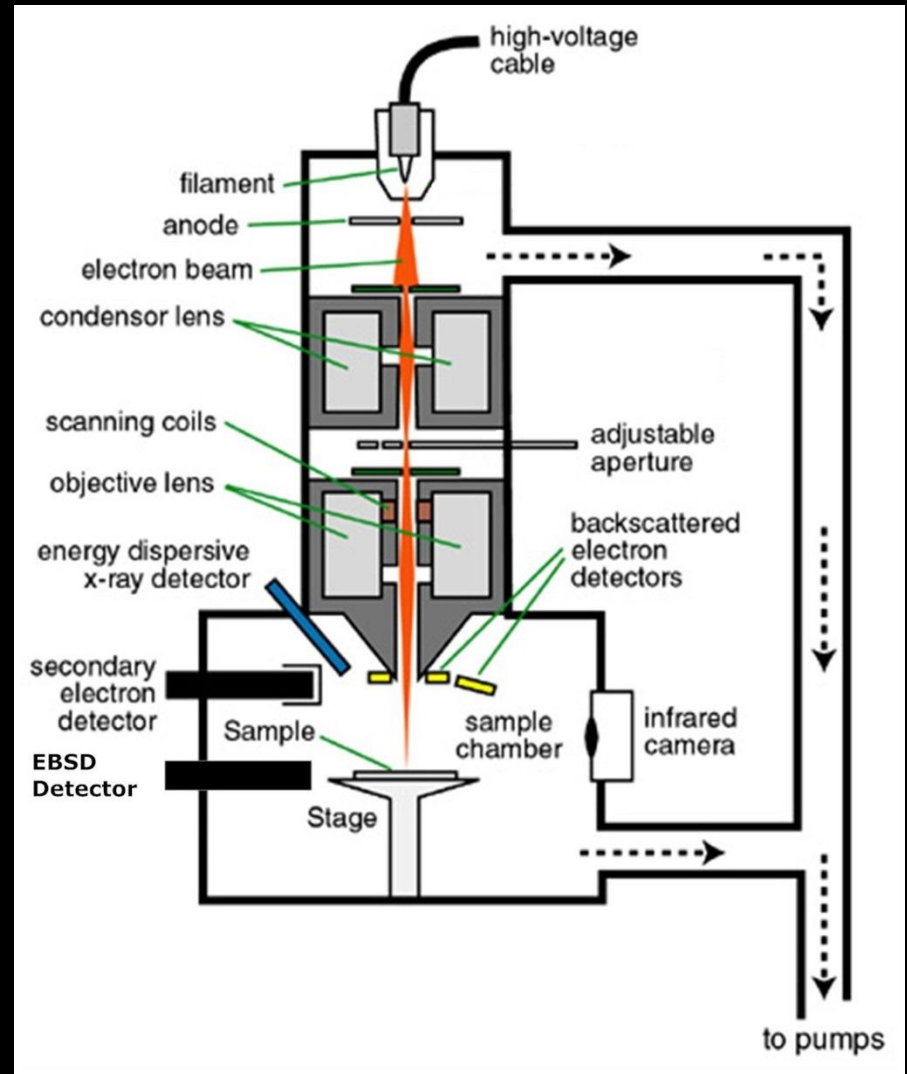
Beam Source

EBSD detector

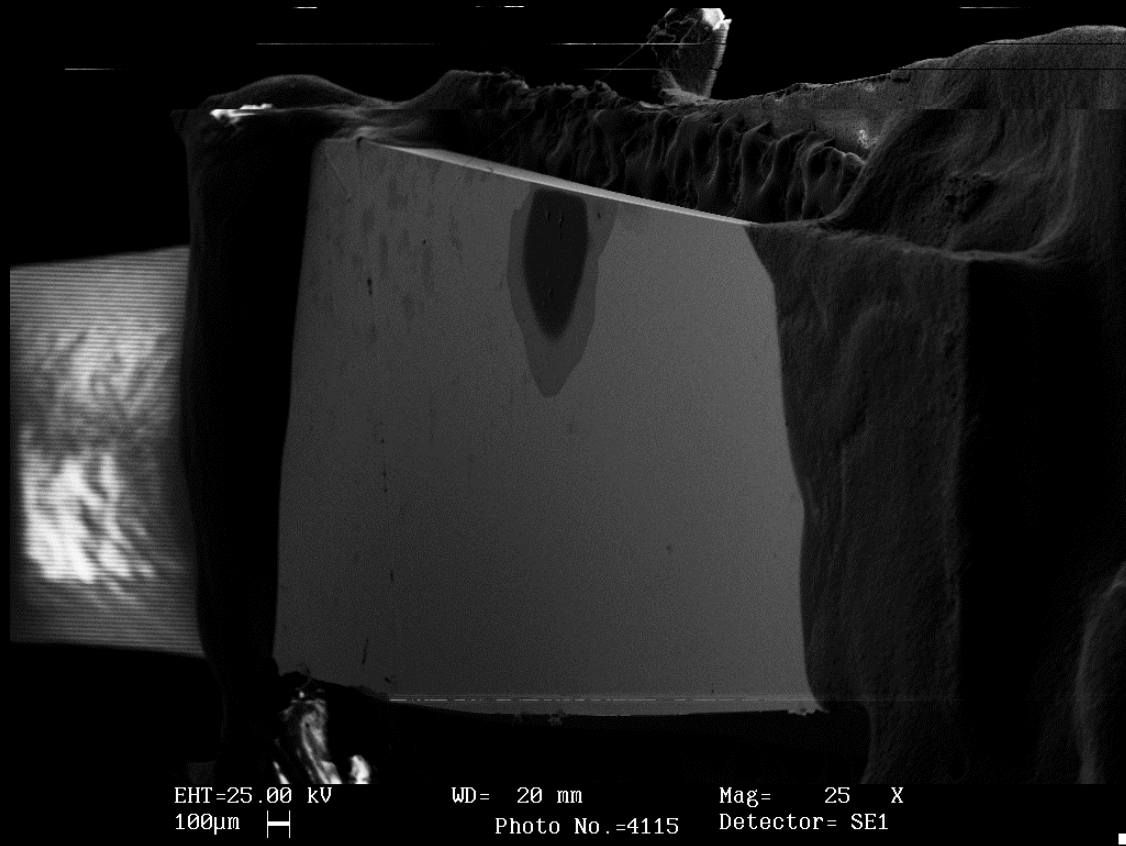
Sample Chamber



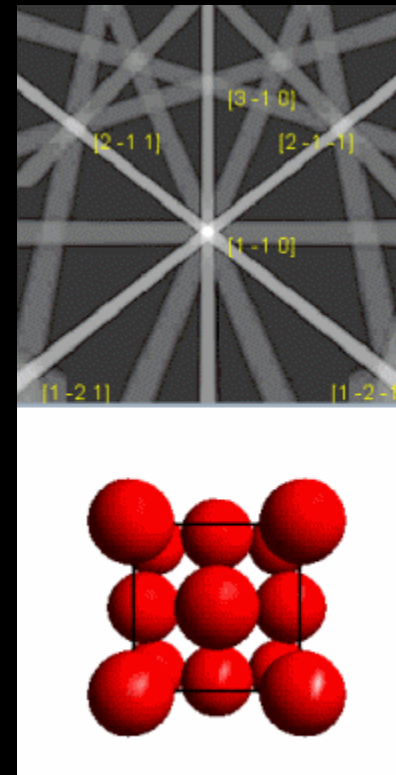
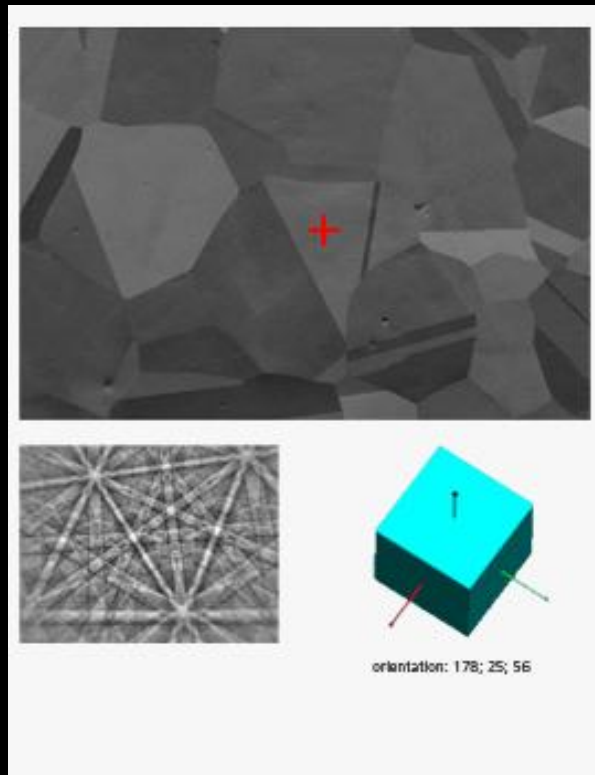
# SEM



# SEM image

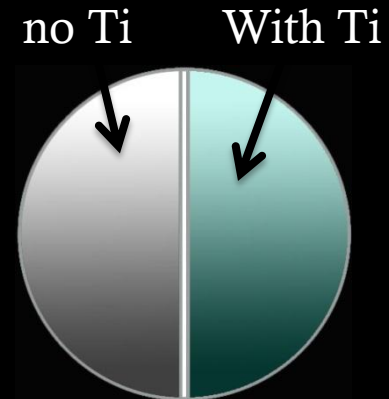


# Kikuchi Patterns



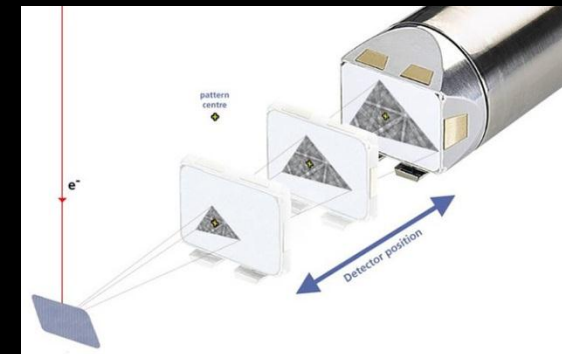
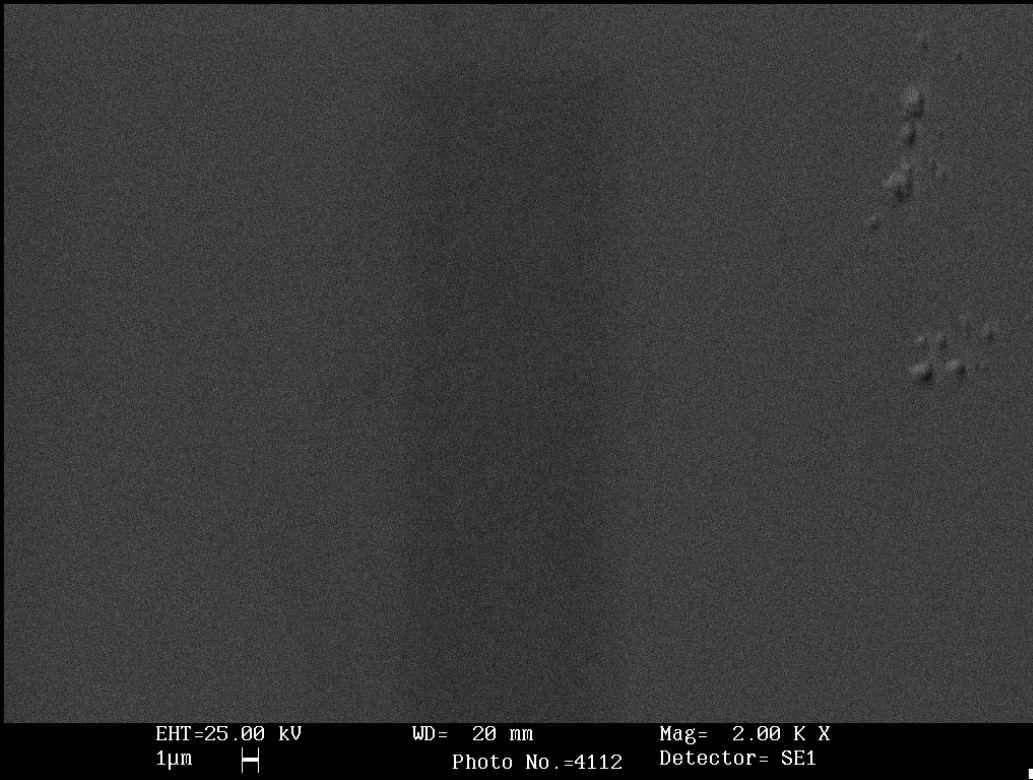
# Our thin films

- Thin silver films on silicon substrate
- On the order of  $1\ \mu\text{m}$  thick
- Some with Ti layers



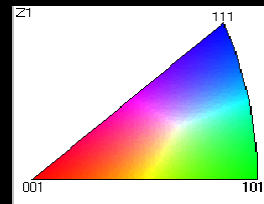
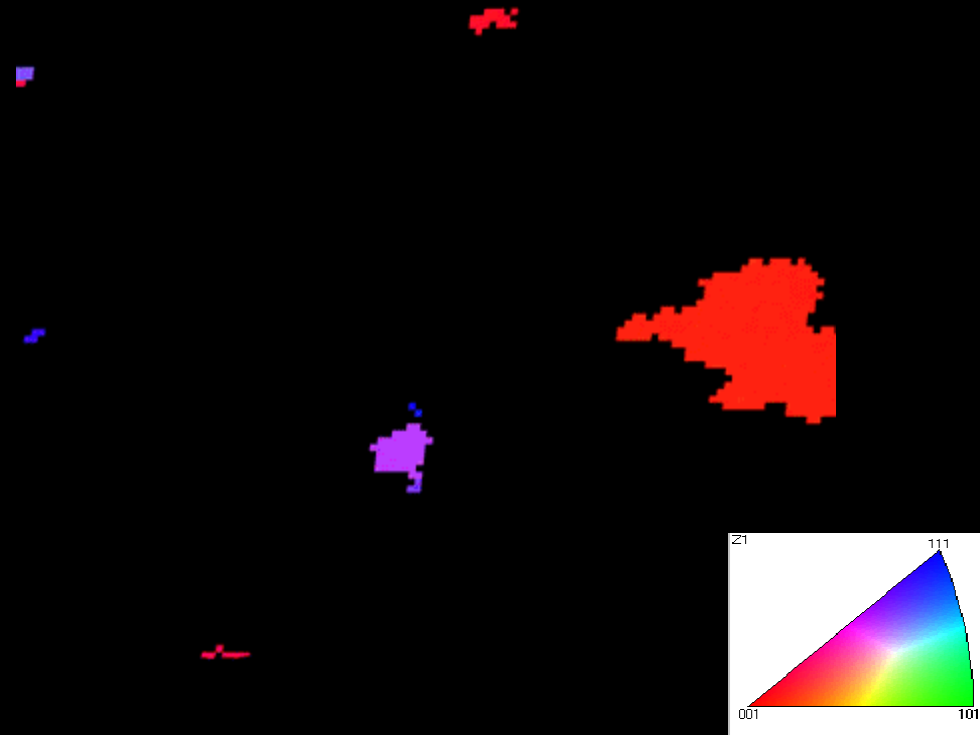
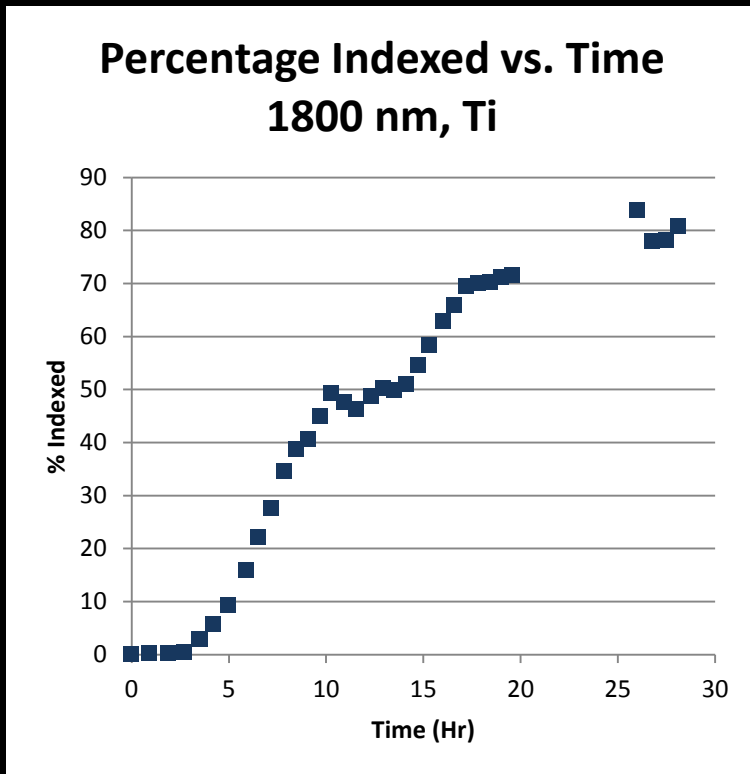


# Experimental Set-up



# Results

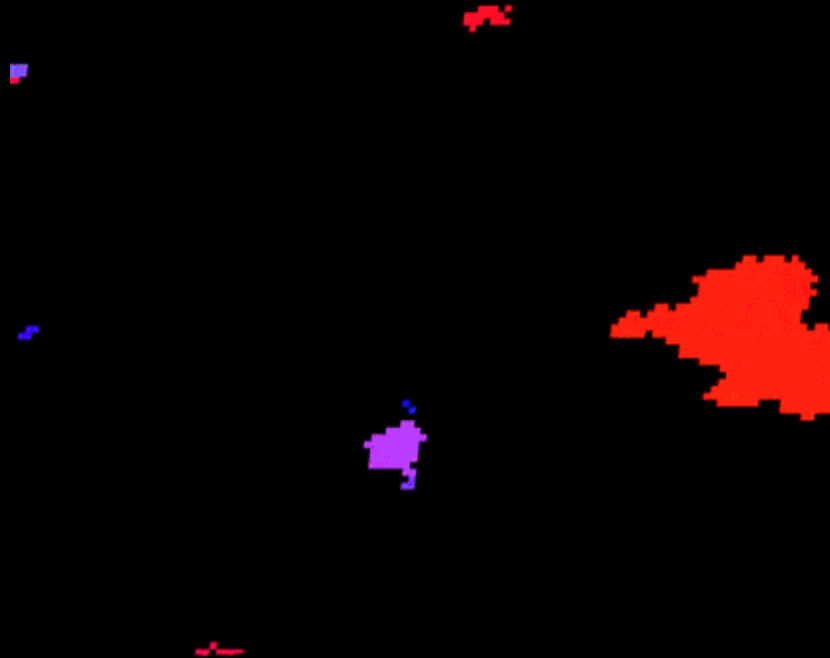
1800 nm, with Ti



# Results

1800 nm, with Ti

- Changes in color due to refocusing and recalibration.
- Grain boundaries are not shown.
- Solid colors could be multiple grains.

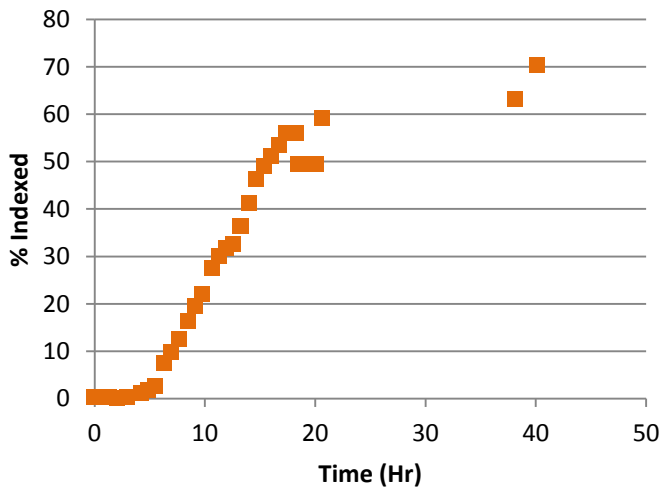


# Results

1200 nm, with Ti



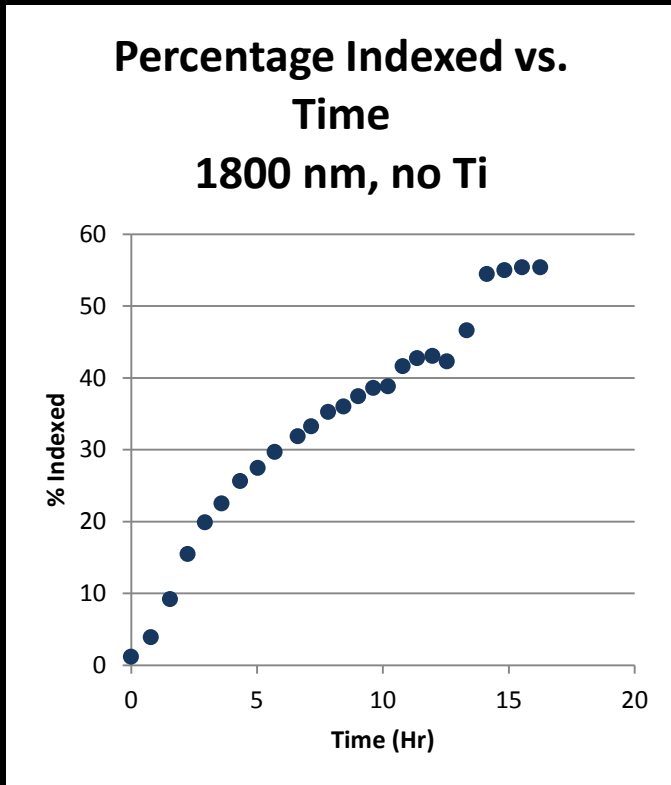
Percentage Indexed vs.  
Time  
1200 nm, with Ti



=10  $\mu$ m; IPF\_Z1; Step=0.2  $\mu$ m; Grid150x150

# Results

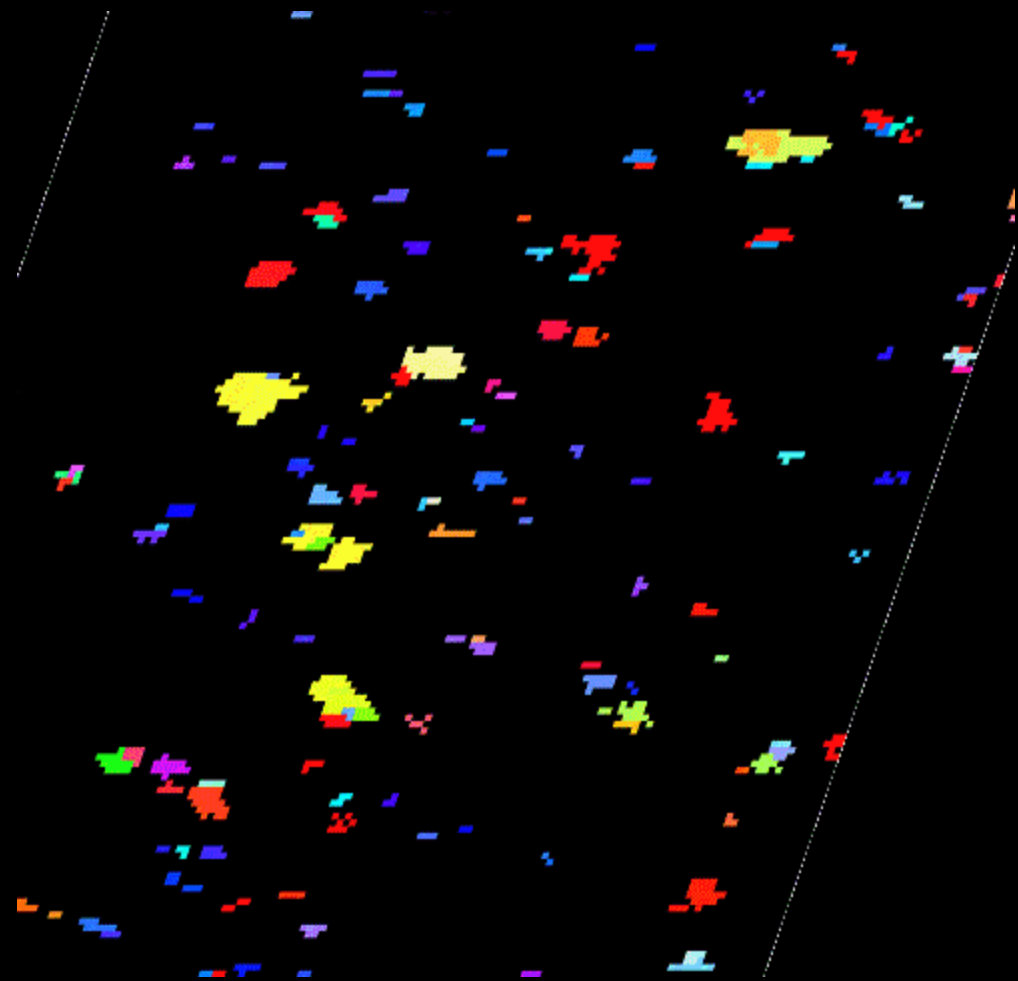
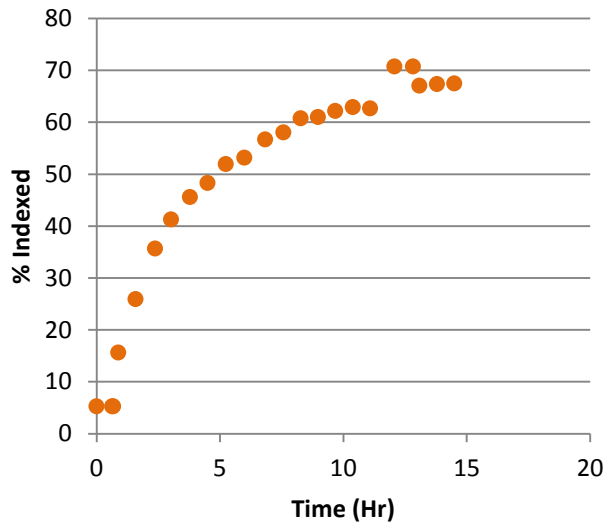
1800 nm, no Ti

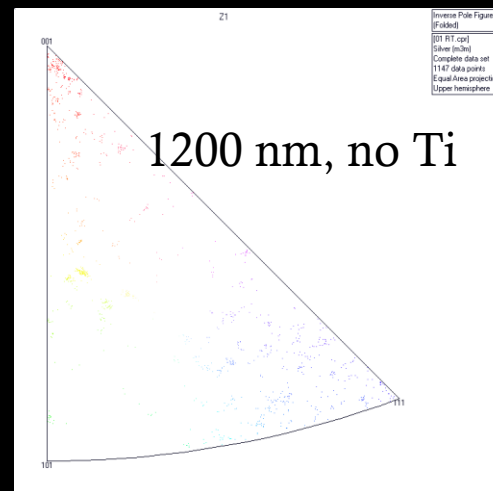
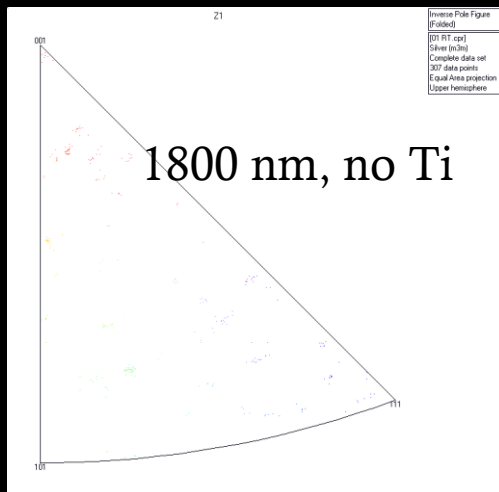
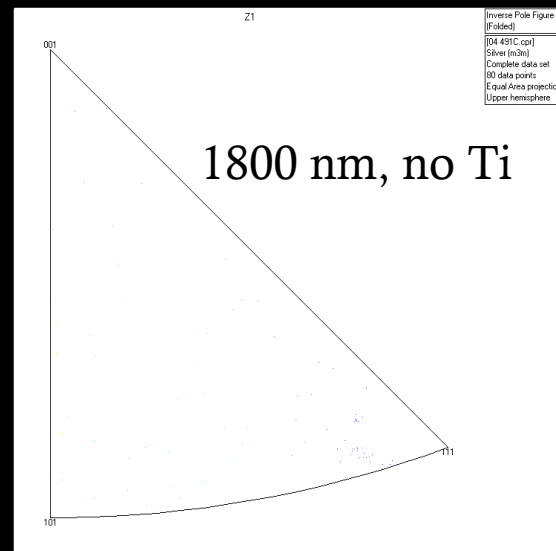
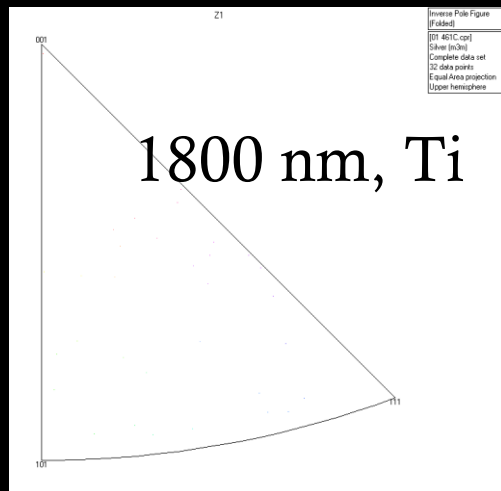


# Results

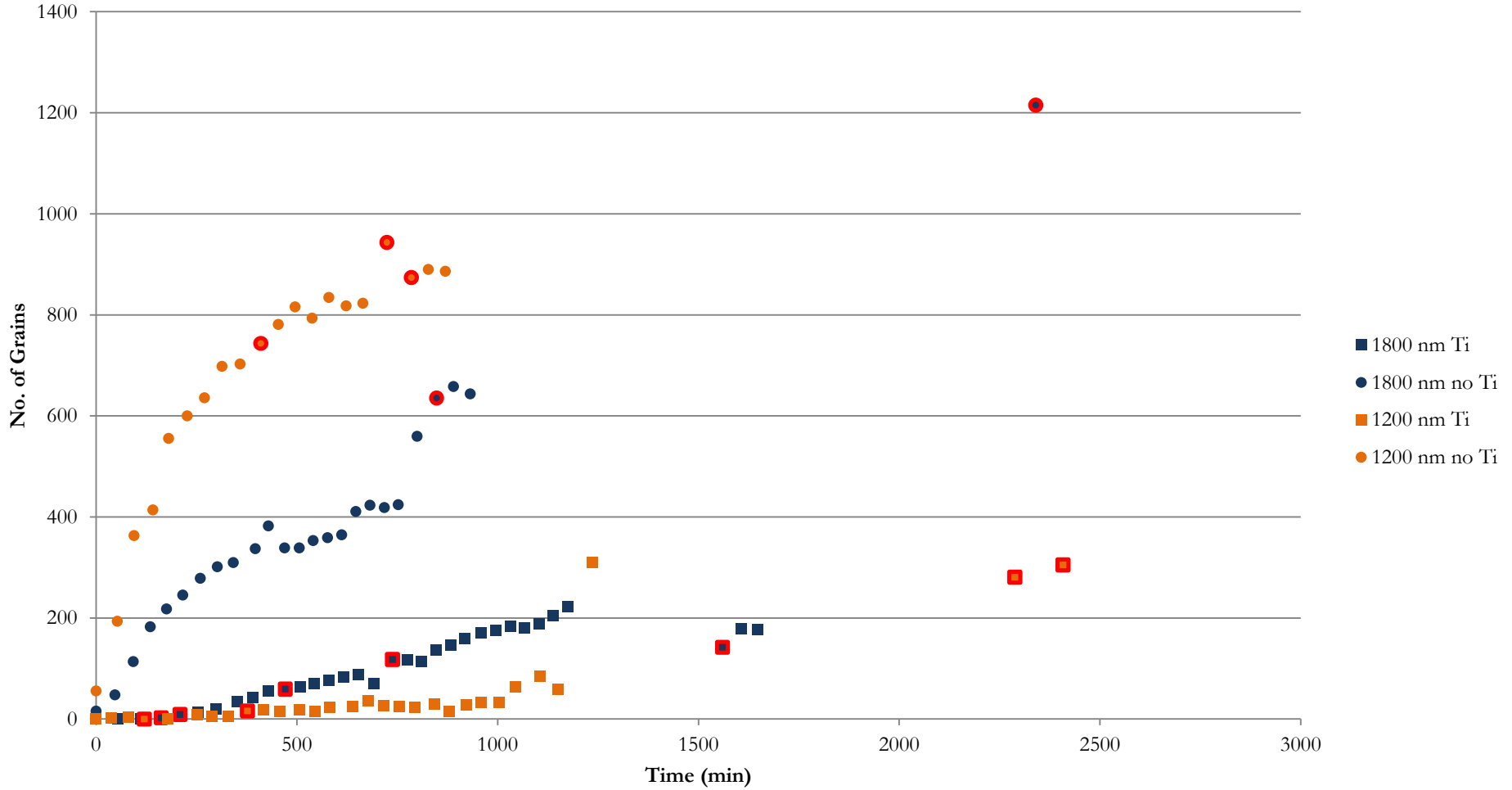
1200 nm, no Ti

Percentage Indexed vs.  
Time  
1200 nm, no Ti

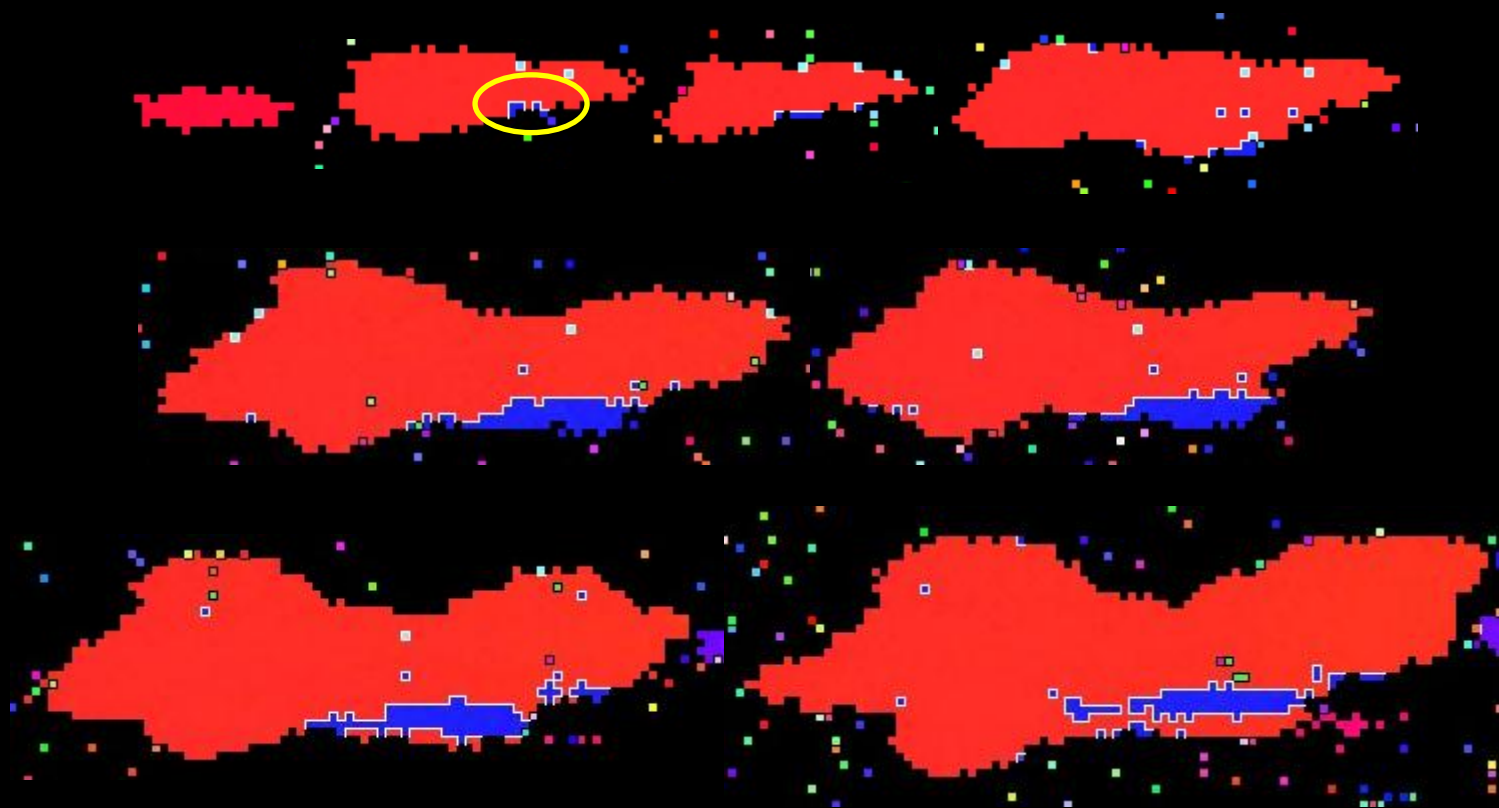


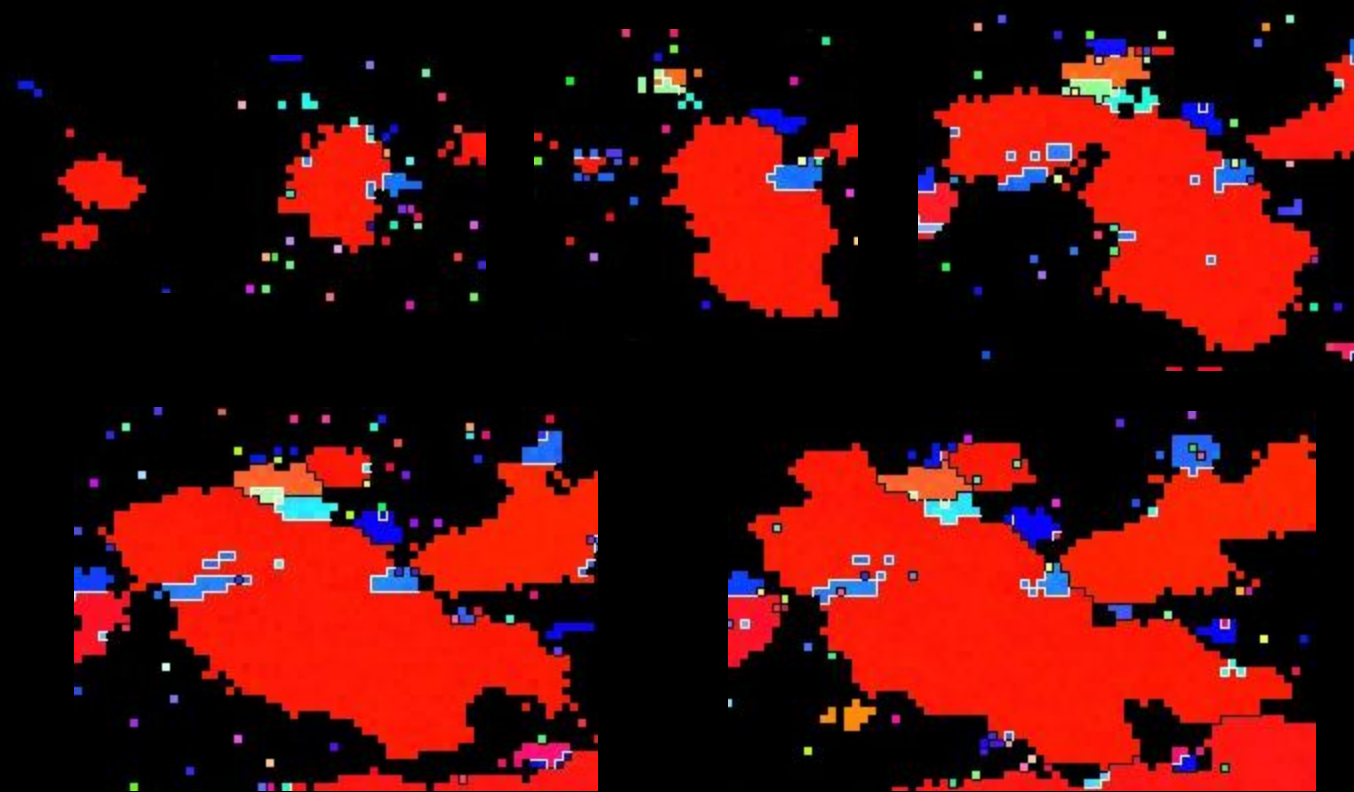


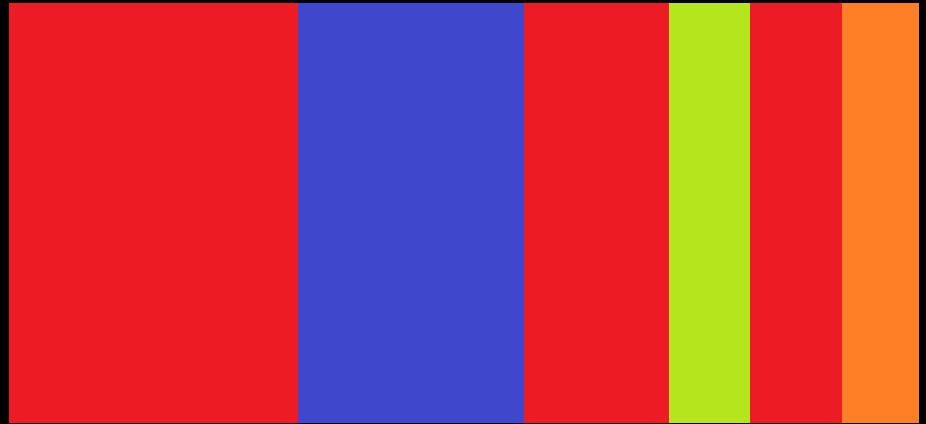
# Total No. of Grains vs. Time

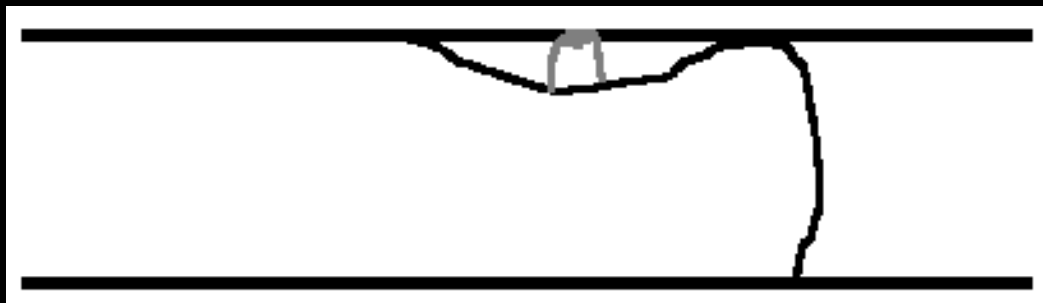


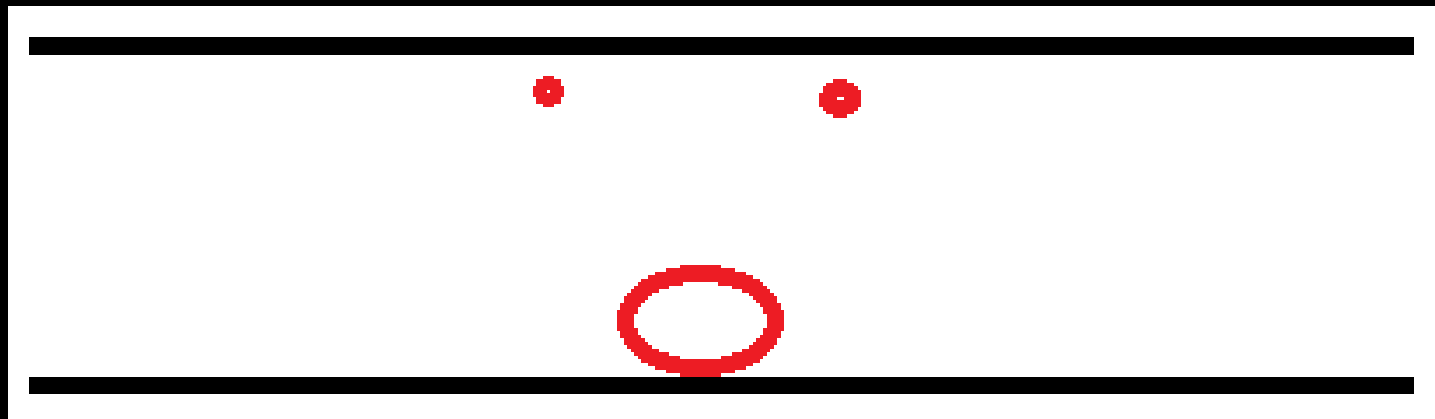














Questions?